



[Go to Product page](#)

Datasheet for ABIN2856544

anti-Nemo-Like Kinase antibody

4 Images

Overview

| | |
|--------------|--|
| Quantity: | 100 µL |
| Target: | Nemo-Like Kinase (NLK) |
| Reactivity: | Human |
| Host: | Rabbit |
| Clonality: | Polyclonal |
| Conjugate: | This Nemo-Like Kinase antibody is un-conjugated |
| Application: | Western Blotting (WB), Immunofluorescence (IF), Immunohistochemistry (Paraffin-embedded Sections) (IHC (p)), Immunocytochemistry (ICC) |

Product Details

| | |
|-------------------|---|
| Immunogen: | Recombinant protein encompassing a sequence within the center region of human NLK. The exact sequence is proprietary. |
| Isotype: | IgG |
| Cross-Reactivity: | Human, Mouse |
| Characteristics: | Rabbit Polyclonal antibody to NLK (nemo-like kinase) NLK antibody [N3C3] |
| Purification: | Purified by antigen-affinity chromatography. |

Target Details

| | |
|-------------------|---|
| Target: | Nemo-Like Kinase (NLK) |
| Alternative Name: | nemo like kinase (NLK Products) |

Target Details

Background: Role in cell fate determination, required for differentiation of bone marrow stromal cells. Acts downstream of MAP3K7 and HIPK2 to negatively regulate the canonical Wnt/beta-catenin signaling pathway and the phosphorylation and destruction of the MYB transcription factor. May suppress a wide range of transcription factors by phosphorylation of the coactivator, CREBBP (By similarity). Involved in TGFbeta-mediated mesoderm induction, acting downstream of MAP3K7/TAK1 to phosphorylate STAT3.

Cellular Localization: Nucleus (By similarity) , Cytoplasm (By similarity)

Molecular Weight: 58 kDa

Gene ID: 51701

UniProt: [Q9UBE8](#)

Pathways: [Ubiquitin Proteasome Pathway](#)

Application Details

Application Notes: WB: 1:500-1:3000. ICC/IF: 1:100-1:1000. IHC-P: 1:100-1:1000. Optimal dilutions/concentrations should be determined by the researcher. Not tested in other applications.

Comment: Positive Control: Mouse brain , HeLa , NLK-transfected 293T
Validation: Overexpression

Restrictions: For Research Use only

Handling

Format: Liquid

Concentration: 1 mg/mL

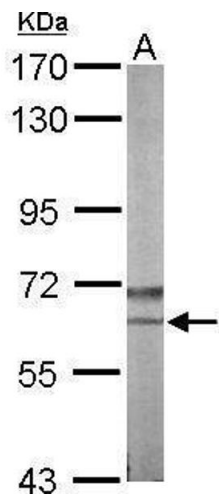
Buffer: 0.1M Tris-Glycine (pH 7), 10 % Glycerol, 0.01 % Thimerosal

Preservative: Thimerosal (Merthiolate)

Precaution of Use: This product contains Thimerosal (Merthiolate): a POISONOUS AND HAZARDOUS SUBSTANCE which should be handled by trained staff only.

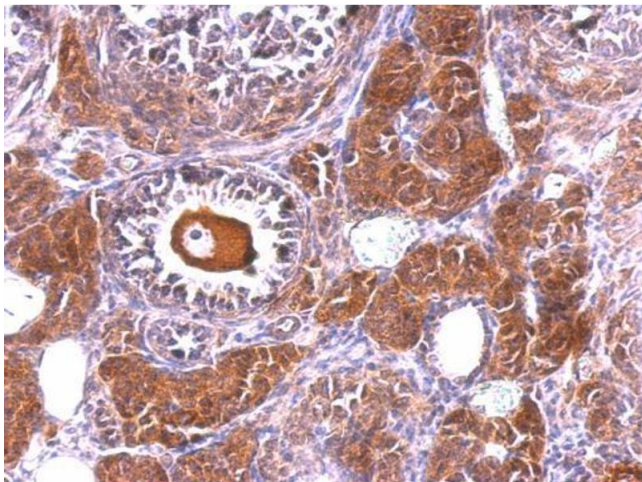
Storage: 4 °C, -20 °C

Storage Comment: Store as concentrated solution. Centrifuge briefly prior to opening vial. For short-term storage (1-2 weeks), store at 4°C. For long-term storage, aliquot and store at -20°C or below. Avoid multiple freeze-thaw cycles.



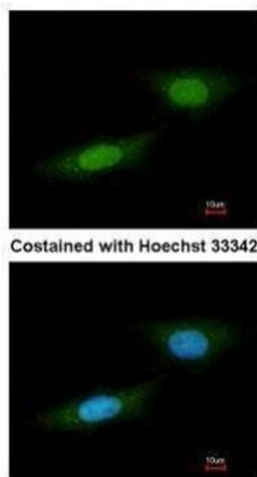
Western Blotting

Image 1. WB Image Sample (50 ug of whole cell lysate) A:
Mouse brain 7.5% SDS PAGE antibody diluted at 1:1000



Immunohistochemistry

Image 2. IHC-P Image NLK antibody [N3C3] detects NLK protein at cytosol and nucleus on mouse ovary by immunohistochemical analysis. Sample: Paraffin-embedded mouse ovary. NLK antibody [N3C3], dilution: 1:500.



Immunofluorescence

Image 3. ICC/IF Image Immunofluorescence analysis of paraformaldehyde-fixed HeLa, using NLK, antibody at 1:100 dilution.

Please check the [product details page](#) for more images. Overall 4 images are available for ABIN2856544.