



[Go to Product page](#)

Datasheet for ABIN2856550
anti-IPO13 antibody (C-Term)

5 Images

Overview

Quantity:	100 µL
Target:	IPO13
Binding Specificity:	C-Term
Reactivity:	Human
Host:	Rabbit
Clonality:	Polyclonal
Conjugate:	This IPO13 antibody is un-conjugated
Application:	Western Blotting (WB), Immunoprecipitation (IP), Immunohistochemistry (Paraffin-embedded Sections) (IHC (p))

Product Details

Immunogen:	Carrier-protein conjugated synthetic peptide encompassing a sequence within the C-terminus region of human Importin 13. The exact sequence is proprietary.
Isotype:	IgG
Cross-Reactivity:	Human, Rat
Characteristics:	Rabbit Polyclonal antibody to Importin 13 (importin 13) Importin 13 antibody [C3], C-term
Purification:	Purified by antigen-affinity chromatography.

Target Details

Target:	IPO13
---------	-------

Target Details

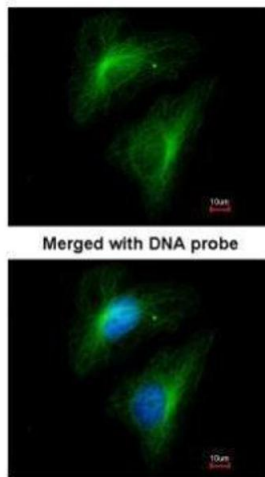
Alternative Name:	importin 13 (IPO13 Products)
Background:	<p>This gene encodes a member of the importin-beta family of nuclear transport proteins. The encoded protein mediates the import of specific cargo proteins from the cytoplasm to the nucleus and is dependent on the Ras-related nuclear protein-GTPase system. The encoded protein is also involved in nuclear export of the eukaryotic translation initiation factor 1A.</p> <p>Cellular Localization: Cytoplasm , Nucleus</p>
Molecular Weight:	108 kDa
Gene ID:	9670
UniProt:	O94829
Pathways:	Intracellular Steroid Hormone Receptor Signaling Pathway , Nuclear Hormone Receptor Binding , Protein targeting to Nucleus

Application Details

Application Notes:	WB: 1:500-1:3000. IHC-P: 1:100-1:1000. IP: 1:100-1:500. Optimal dilutions/concentrations should be determined by the researcher. Not tested in other applications.
Comment:	Positive Control: IPO13 transfected 293T , PC-12 , Rat2
Restrictions:	For Research Use only

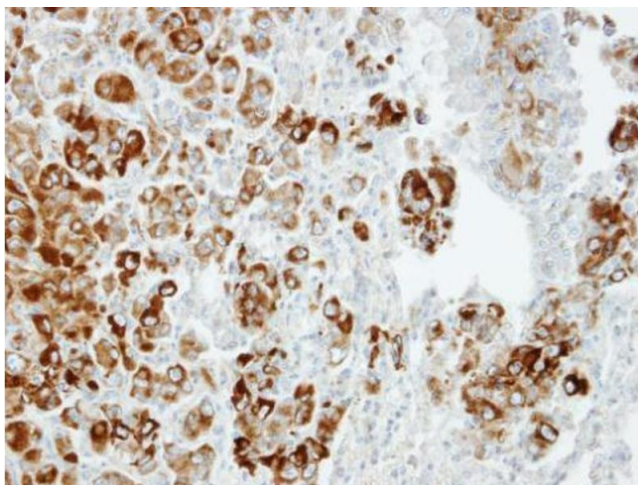
Handling

Format:	Liquid
Concentration:	1.02 mg/mL
Buffer:	0.1M Tris-Glycine (pH 7), 10 % Glycerol, 0.01 % Thimerosal
Preservative:	Thimerosal (Merthiolate)
Precaution of Use:	This product contains Thimerosal (Merthiolate): a POISONOUS AND HAZARDOUS SUBSTANCE which should be handled by trained staff only.
Storage:	4 °C,-20 °C
Storage Comment:	Store as concentrated solution. Centrifuge briefly prior to opening vial. For short-term storage (1-2 weeks), store at 4°C. For long-term storage, aliquot and store at -20°C or below. Avoid multiple freeze-thaw cycles.



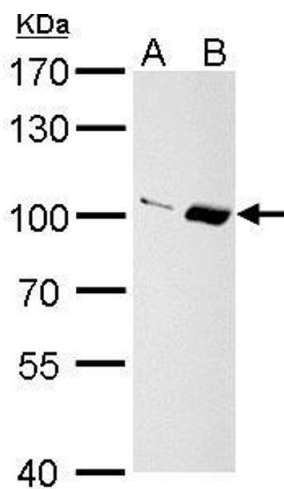
Immunofluorescence

Image 1. ICC/IF Image Immunofluorescence analysis of paraformaldehyde-fixed HeLa, using Importin 13, antibody at 1:200 dilution.



Immunohistochemistry

Image 2. IHC-P Image Immunohistochemical analysis of paraffin-embedded CL1-5 xenograft, using Importin 13, antibody at 1:100 dilution.



Western Blotting

Image 3. WB Image Importin 13 antibody [C3], C-term detects Importin 13 protein by Western blot analysis. A. 30 µg PC-12 whole cell lysate/extract B. 30 µg Rat2 whole cell lysate/extract 7.5 % SDS-PAGE Importin 13 antibody [C3], C-term , dilution: 1:1000

Please check the [product details page](#) for more images. Overall 5 images are available for ABIN2856550.