



[Go to Product page](#)

Datasheet for ABIN2856559  
**anti-TMEM147 antibody**

4 Images

Overview

Quantity:	100 µL
Target:	TMEM147
Reactivity:	Human
Host:	Rabbit
Clonality:	Polyclonal
Conjugate:	This TMEM147 antibody is un-conjugated
Application:	Western Blotting (WB), Immunohistochemistry (Paraffin-embedded Sections) (IHC (p)), Immunocytochemistry (ICC), Immunofluorescence (IF)

Product Details

Immunogen:	Carrier-protein conjugated synthetic peptide encompassing a sequence within the center region of human Transmembrane protein 147. The exact sequence is proprietary.
Isotype:	IgG
Cross-Reactivity:	Human
Characteristics:	Rabbit Polyclonal antibody to Transmembrane protein 147 (transmembrane protein 147) Transmembrane protein 147 antibody [N1C1]
Purification:	Purified by antigen-affinity chromatography.

Target Details

Target:	TMEM147
Alternative Name:	transmembrane protein 147 ( <a href="#">TMEM147 Products</a> )

## Target Details

---

Molecular Weight: 25 kDa

Gene ID: 10430

UniProt: [Q9BVK8](#)

## Application Details

---

Application Notes: WB: 1:500-1:3000. ICC/IF: 1:100-1:1000. IHC-P: 1:100-1:1000. Optimal dilutions/concentrations should be determined by the researcher. Not tested in other applications.

Comment: Positive Control: Raji

Restrictions: For Research Use only

## Handling

---

Format: Liquid

Concentration: 1 mg/mL

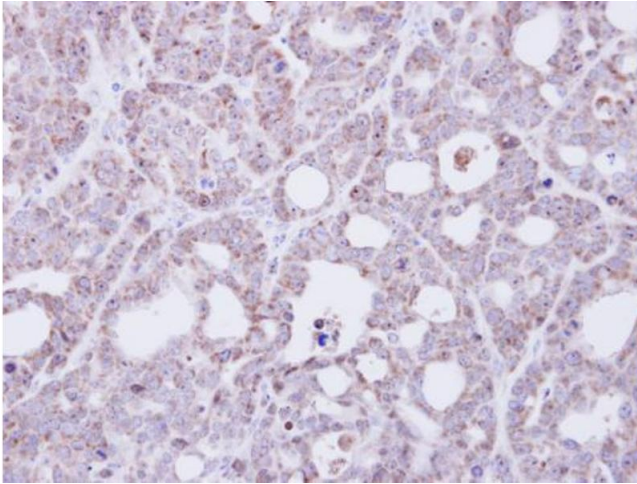
Buffer: 0.1M Tris-Glycine ( pH 7), 10 % Glycerol, 0.01 % Thimerosal

Preservative: Thimerosal (Merthiolate)

Precaution of Use: This product contains Thimerosal (Merthiolate): a POISONOUS AND HAZARDOUS SUBSTANCE which should be handled by trained staff only.

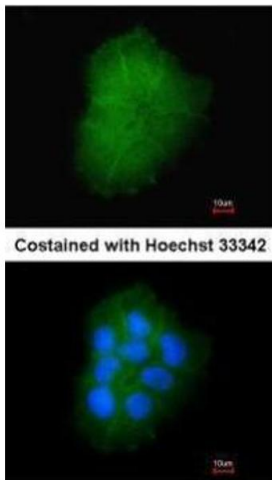
Storage: 4 °C, -20 °C

Storage Comment: Store as concentrated solution. Centrifuge briefly prior to opening vial. For short-term storage (1-2 weeks), store at 4°C. For long-term storage, aliquot and store at -20°C or below. Avoid multiple freeze-thaw cycles.



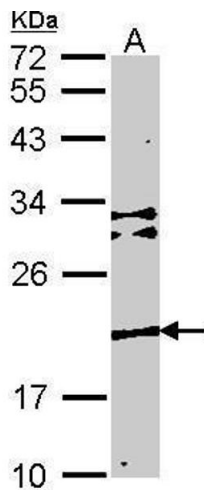
### Immunohistochemistry

**Image 1.** IHC-P Image Immunohistochemical analysis of paraffin-embedded NCI-N87 xenograft, using Transmembrane protein 147, antibody at 1:500 dilution.



### Immunofluorescence

**Image 2.** ICC/IF Image Immunofluorescence analysis of paraformaldehyde-fixed A431, using Transmembrane protein 147, antibody at 1:200 dilution.



### Western Blotting

**Image 3.** WB Image Sample (30 ug of whole cell lysate) A: NIH-3T3 12% SDS PAGE Transmembrane protein 147 antibody antibody diluted at 1:1000

Please check the [product details page](#) for more images. Overall 4 images are available for ABIN2856559.