

Datasheet for ABIN2856560
anti-VPS37C antibody (N-Term)[Go to Product page](#)

2 Images

Overview

Quantity:	100 µL
Target:	VPS37C
Binding Specificity:	N-Term
Reactivity:	Human
Host:	Rabbit
Clonality:	Polyclonal
Conjugate:	This VPS37C antibody is un-conjugated
Application:	Western Blotting (WB), Immunocytochemistry (ICC), Immunofluorescence (IF)

Product Details

Immunogen:	Carrier-protein conjugated synthetic peptide encompassing a sequence within the N-terminus region of human VPS37C. The exact sequence is proprietary.
Isotype:	IgG
Cross-Reactivity:	Mouse (Murine), Rat (Rattus), Cow (Bovine)
Cross-Reactivity (Details):	Mouse (87 %), Rat (87 %), Bovine (87 %)
Characteristics:	Rabbit polyclonal antibody to VPS37C (vacuolar protein sorting 37 homolog C (S. cerevisiae)) VPS37C antibody [N1], N-term
Purification:	Purified by antigen-affinity chromatography.

Target Details

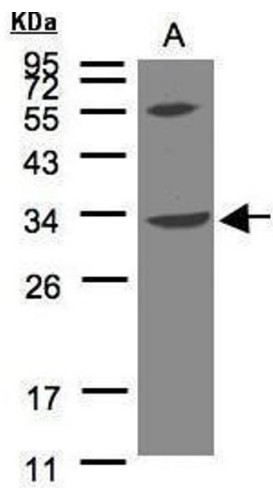
Target:	VPS37C
Alternative Name:	VPS37C (VPS37C Products)
Background:	<p>VPS37C is a subunit of ESCRT-I (endosomal sorting complex required for transport I), a complex in the class E vacuolar protein sorting (VPS) pathway required for sorting ubiquitinated transmembrane proteins into internal vesicles of multivesicular bodies (Eastman et al., 2005 [PubMed 15509564]).[supplied by OMIM]</p> <p>Cellular Localization: Late endosome membrane, Peripheral membrane protein (Probable)</p>
Molecular Weight:	39 kDa
Gene ID:	55048

Application Details

Application Notes:	Suggested dilution Reference ICC/IF 1:100-1:1000* Western blot 1:500-1:3000* Not tested in other applications. *Optimal dilutions/concentrations should be determined by the researcher.Suggested dilutionReferenceICC/IF1:100-1:1000* Western blot1:500-1:3000*
Comment:	Positive Control: HepG2 , Molt-4 , Raji
Restrictions:	For Research Use only

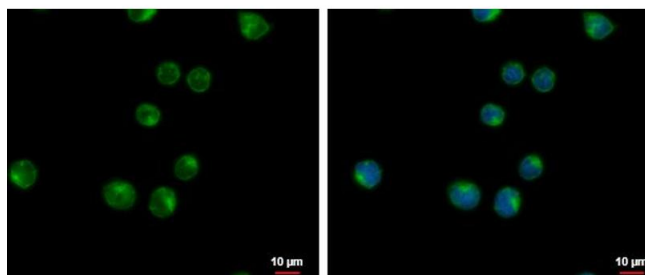
Handling

Format:	Liquid
Concentration:	1 mg/mL
Buffer:	0.1M Tris, 0.1M Glycine, 10 % Glycerol (pH 7). 0.01 % Thimerosal was added as a preservative.
Preservative:	Thimerosal (Merthiolate)
Precaution of Use:	This product contains Thimerosal (Merthiolate): a POISONOUS AND HAZARDOUS SUBSTANCE which should be handled by trained staff only.
Storage:	-20 °C
Storage Comment:	Keep as concentrated solution. Aliquot and store at -20°C or below. Avoid multiple freeze-thaw cycles.



Western Blotting

Image 1. WB Image Sample(30 µg of whole cell lysate)
A:Raji, 12% SDS PAGE antibody diluted at 1:500



Immunofluorescence

Image 2. ICC/IF Image VPS37C antibody [N1], N-term detects VPS37C protein at cytoplasm by immunofluorescent analysis. Sample: Raji cells were fixed in 4% paraformaldehyde at RT for 15 min. Green: VPS37C protein stained by VPS37C antibody [N1], N-term, diluted at 1:500. Blue: Hoechst 33342 staining. Scale bar = 10 µm.