



[Go to Product page](#)

Datasheet for ABIN2856561  
**anti-GNRPX antibody (C-Term)**

1 Image

### Overview

Quantity:	100 µL
Target:	GNRPX (PLEKHJ1)
Binding Specificity:	C-Term
Reactivity:	Human
Host:	Rabbit
Clonality:	Polyclonal
Application:	Western Blotting (WB)

### Product Details

Immunogen:	Carrier-protein conjugated synthetic peptide encompassing a sequence within the C-terminus region of human GNRPX. The exact sequence is proprietary.
Isotype:	IgG
Cross-Reactivity:	Mouse (Murine), Rat (Rattus), Rhesus Monkey, Cow (Bovine)
Cross-Reactivity (Details):	Mouse (82 %), Rat (91 %), Rhesus Monkey (100 %), Bovine (92 %)
Characteristics:	Rabbit polyclonal antibody to GNRPX (pleckstrin homology domain containing, family J member 1) GNRPX antibody [C1C3]
Purification:	Purified by antigen-affinity chromatography.

### Target Details

Target:	GNRPX (PLEKHJ1)
---------	-----------------

## Target Details

---

Alternative Name: GNRPX ([PLEKHJ1 Products](#))

---

Molecular Weight: 18 kDa

---

Gene ID: 55111

---

## Application Details

---

Application Notes: Suggested dilution Reference Western blot 1:500-1:3000\* Not tested in other applications.  
\*Optimal dilutions/concentrations should be determined by the researcher.Suggested dilutionReferenceWestern blot1:500-1:3000\*

---

Comment: Positive Control: HeLa , Jurkat , NT2D1

---

Restrictions: For Research Use only

---

## Handling

---

Format: Liquid

---

Concentration: 1 mg/mL

---

Buffer: 0.1M Tris, 0.1M Glycine, 10 % Glycerol ( pH 7). 0.01 % Thimerosal was added as a preservative.

---

Preservative: Thimerosal (Merthiolate)

---

Precaution of Use: This product contains Thimerosal (Merthiolate): a POISONOUS AND HAZARDOUS SUBSTANCE which should be handled by trained staff only.

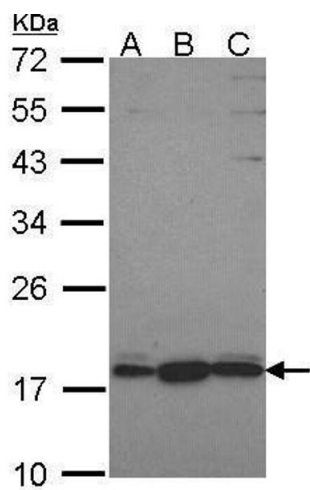
---

Storage: -20 °C

---

Storage Comment: Keep as concentrated solution. Aliquot and store at -20°C or below. Avoid multiple freeze-thaw cycles.

---



### Western Blotting

**Image 1.** WB Image Sample (30 ug of whole cell lysate) A: HeLa B: JurKat C: NT2D1 12% SDS PAGE GNRPX antibody antibody diluted at 1:1000