

Datasheet for ABIN2856562
anti-VPS35 antibody (C-Term)

6 Images

1 Publication

[Go to Product page](#)

Overview

Quantity:	100 µL
Target:	VPS35
Binding Specificity:	C-Term
Reactivity:	Human, Mouse, Rat
Host:	Rabbit
Clonality:	Polyclonal
Conjugate:	This VPS35 antibody is un-conjugated
Application:	Western Blotting (WB), Immunofluorescence (IF), Immunocytochemistry (ICC), Immunohistochemistry (Paraffin-embedded Sections) (IHC (p))

Product Details

Immunogen:	Carrier-protein conjugated synthetic peptide encompassing a sequence within the C-terminus region of human VPS35. The exact sequence is proprietary.
Isotype:	IgG
Cross-Reactivity:	Zebrafish (Danio rerio), Chicken, Cow (Bovine)
Cross-Reactivity (Details):	Zebrafish (86 %), Chicken (93 %), Bovine (100 %)
Characteristics:	Rabbit Polyclonal antibody to VPS35 (vacuolar protein sorting 35 homolog (S. cerevisiae)) VPS35 antibody [C3], C-term
Purification:	Purified by antigen-affinity chromatography.

Target Details

Target:	VPS35
Alternative Name:	VPS35 (VPS35 Products)
Background:	<p>This gene belongs to a group of vacuolar protein sorting (VPS) genes. The encoded protein is a component of a large multimeric complex, termed the retromer complex, involved in retrograde transport of proteins from endosomes to the trans-Golgi network. The close structural similarity between the yeast and human proteins that make up this complex suggests a similarity in function. Expression studies in yeast and mammalian cells indicate that this protein interacts directly with VPS35, which serves as the core of the retromer complex.</p> <p>Cellular Localization: Cytoplasm , Membrane, Peripheral membrane protein</p>
Molecular Weight:	92 kDa
Gene ID:	55737

Application Details

Application Notes:	<p>Suggested dilution Reference ICC/IF 1:100-1:1000* IHC (Formalin-fixed paraffin-embedded sections) 1:100-1:1000* Western blot 1:500-1:3000* Not tested in other applications. *Optimal dilutions/concentrations should be determined by the researcher.Suggested dilutionReferenceICC/IF1:100-1:1000* IHC (Formalin-fixed paraffin-embedded sections)1:100-1:1000* Western blot1:500-1:3000*</p>
Comment:	Positive Control: A549 , H1299 , HCT116 , H1299 , HeLaS3 , HepG2 , Molt-4 , Raji , mouse brain , rat brain
Restrictions:	For Research Use only

Handling

Format:	Liquid
Concentration:	1 mg/mL
Buffer:	1XPBS, 20 % Glycerol (pH 7). 0.025 % ProClin 300 was added as a preservative.
Preservative:	ProClin
Precaution of Use:	This product contains ProClin: a POISONOUS AND HAZARDOUS SUBSTANCE which should be handled by trained staff only.
Storage:	-20 °C

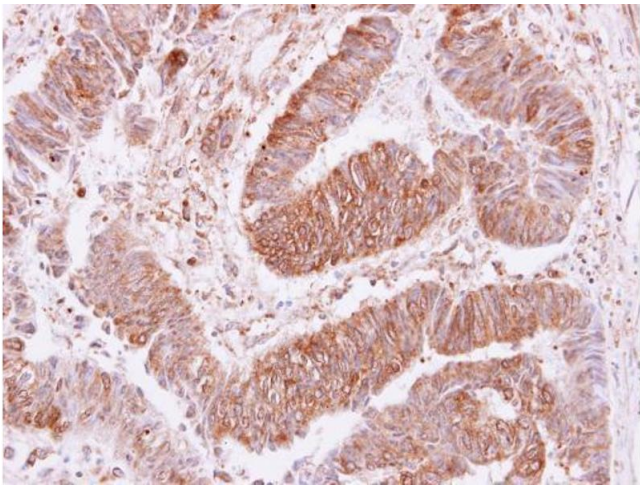
Handling

Storage Comment: Keep as concentrated solution. Aliquot and store at -20°C or below. Avoid multiple freeze-thaw cycles.

Publications

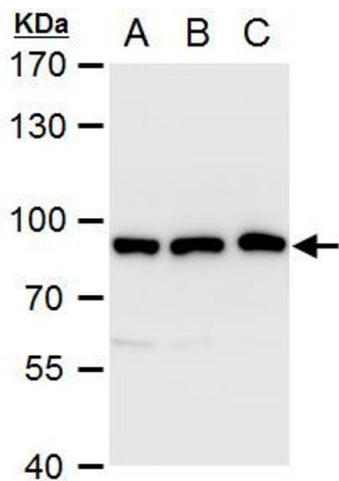
Product cited in: Lenoir, Ustunel, Rajesh, Kaur, Moreau, Gruenberg, Overduin: "Phosphorylation of conserved phosphoinositide binding pocket regulates sorting nexin membrane targeting." in: **Nature communications**, Vol. 9, Issue 1, pp. 993, (2018) ([PubMed](#)).

Images



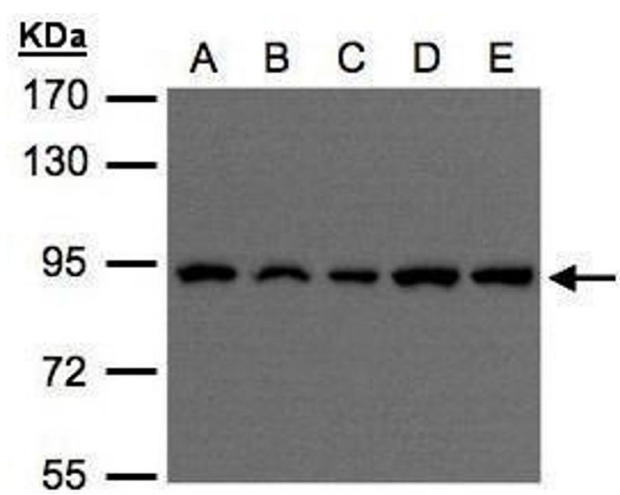
Immunohistochemistry

Image 1. IHC-P Image VPS35 antibody [C3], C-term detects VPS35 protein at cytoplasm and membrane on human colon carcinoma by immunohistochemical analysis. Sample: Paraffin-embedded colon carcinoma. VPS35 antibody [C3], C-term , dilution: 1:250.



Western Blotting

Image 2. WB Image VPS35 antibody [C3], C-term detects VPS35 protein by western blot analysis. A. 30 µg A549 whole cell extract B. 30 µg H1299 whole cell extract C. 30 µg HCT116 whole cell extract 7.5 % SDS-PAGE VPS35 antibody [C3], C-term , dilution: 1:1000



Western Blotting

Image 3. WB Image Sample(30 µg of whole cell lysate)
A:H1299 B:HeLa S3 , C:Hep G2 , D:MOLT4 , E:Raji , 7.5% SDS
PAGE antibody diluted at 1:500

Please check the [product details page](#) for more images. Overall 6 images are available for ABIN2856562.