



Datasheet for ABIN2856563 anti-GRIPAP1 antibody



[Go to Product page](#)

1 Image

Overview

Quantity:	100 µL
Target:	GRIPAP1
Reactivity:	Human
Host:	Rabbit
Clonality:	Polyclonal
Conjugate:	This GRIPAP1 antibody is un-conjugated
Application:	Western Blotting (WB)

Product Details

Immunogen:	Carrier-protein conjugated synthetic peptide encompassing a sequence within the center region of human GRASP1. The exact sequence is proprietary.
Isotype:	IgG
Cross-Reactivity:	Human
Characteristics:	Rabbit Polyclonal antibody to GRASP1 (GRIP1-associated protein 1) GRASP1 antibody [N3], Internal
Purification:	Purified by antigen-affinity chromatography.

Target Details

Target:	GRIPAP1
Alternative Name:	GRIP1 associated protein 1 (GRIPAP1 Products)

Target Details

Background: GRASP1 is a neuron-specific guanine nucleotide exchange factor for the Ras family of small G proteins (RasGEF) and is associated with the GRIP/AMPA receptor complex in brain (Ye et al., 2000 [PubMed 10896157]).[supplied by OMIM]

Cellular Localization: Early endosome

Molecular Weight: 96 kDa

Gene ID: 56850

UniProt: [Q4V328](#)

Pathways: [SARS-CoV-2 Protein Interactome](#)

Application Details

Application Notes: WB: 1:500-1:3000. Optimal dilutions/concentrations should be determined by the researcher. Not tested in other applications.

Comment: Positive Control: HepG2

Restrictions: For Research Use only

Handling

Format: Liquid

Concentration: 0.67 mg/mL

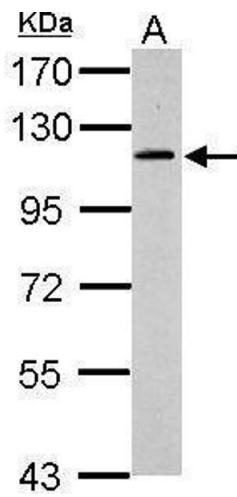
Buffer: 0.1M Tris-Glycine (pH 7), 10 % Glycerol, 0.01 % Thimerosal

Preservative: Thimerosal (Merthiolate)

Precaution of Use: This product contains Thimerosal (Merthiolate): a POISONOUS AND HAZARDOUS SUBSTANCE which should be handled by trained staff only.

Storage: 4 °C, -20 °C

Storage Comment: Store as concentrated solution. Centrifuge briefly prior to opening vial. For short-term storage (1-2 weeks), store at 4°C. For long-term storage, aliquot and store at -20°C or below. Avoid multiple freeze-thaw cycles.



Western Blotting

Image 1. WB Image Sample (30 ug of whole cell lysate) A:
HepG2 7.5% SDS PAGE antibody diluted at 1:500