



[Go to Product page](#)

Datasheet for ABIN2856564
anti-TGIF2 antibody (C-Term)

1 Image

Overview

Quantity:	100 µL
Target:	TGIF2
Binding Specificity:	C-Term
Reactivity:	Human
Host:	Rabbit
Clonality:	Polyclonal
Conjugate:	This TGIF2 antibody is un-conjugated
Application:	Western Blotting (WB)

Product Details

Immunogen:	Carrier-protein conjugated synthetic peptide encompassing a sequence within the C-terminus region of human TGF beta induced factor 2. The exact sequence is proprietary.
Isotype:	IgG
Cross-Reactivity:	Human
Characteristics:	Rabbit polyclonal antibody to TGF beta induced factor 2 (TGFB-induced factor homeobox 2) TGF beta induced factor 2 antibody
Purification:	Purified by antigen-affinity chromatography.

Target Details

Target:	TGIF2
---------	-------

Target Details

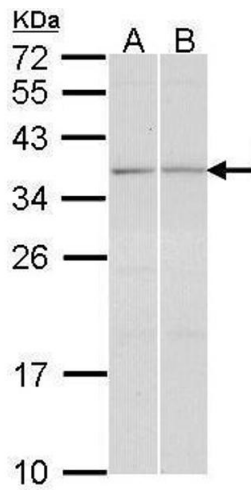
Alternative Name:	TGFB induced factor homeobox 2 (TGIF2 Products)
Background:	The protein encoded by this gene is a DNA-binding homeobox protein and a transcriptional repressor. The encoded protein appears to repress transcription by recruiting histone deacetylases to TGF beta-responsive genes. This gene is amplified and overexpressed in some ovarian cancers, and mutations in this gene can cause holoprosencephaly. Cellular Localization: Nucleus
Molecular Weight:	26 kDa
Gene ID:	60436
UniProt:	Q9GZN2

Application Details

Application Notes:	WB: 1:500-1:3000. Optimal dilutions/concentrations should be determined by the researcher. Not tested in other applications.
Comment:	Positive Control: A431 , HeLa
Restrictions:	For Research Use only

Handling

Format:	Liquid
Concentration:	0.59 mg/mL
Buffer:	0.1M Tris-Glycine (pH 7), 10 % Glycerol, 0.01 % Thimerosal
Preservative:	Thimerosal (Merthiolate)
Precaution of Use:	This product contains Thimerosal (Merthiolate): a POISONOUS AND HAZARDOUS SUBSTANCE which should be handled by trained staff only.
Storage:	4 °C,-20 °C
Storage Comment:	Store as concentrated solution. Centrifuge briefly prior to opening vial. For short-term storage (1-2 weeks), store at 4°C. For long-term storage, aliquot and store at -20°C or below. Avoid multiple freeze-thaw cycles.



Western Blotting

Image 1. WB Image Sample (30 ug of whole cell lysate) A: A431 , B: HeLa 12% SDS PAGE antibody diluted at 1:1000