

Datasheet for ABIN2856566  
**anti-TMX1 antibody (C-Term)**[Go to Product page](#)

## 2 Images

## Overview

Quantity:	100 µL
Target:	TMX1
Binding Specificity:	C-Term
Reactivity:	Human
Host:	Rabbit
Clonality:	Polyclonal
Conjugate:	This TMX1 antibody is un-conjugated
Application:	Western Blotting (WB), Immunofluorescence (IF), Immunocytochemistry (ICC)

## Product Details

Immunogen:	Carrier-protein conjugated synthetic peptide encompassing a sequence within the C-terminus region of human TXNDC1. The exact sequence is proprietary.
Isotype:	IgG
Cross-Reactivity:	Human
Characteristics:	Rabbit Polyclonal antibody to TXNDC1 (thioredoxin-related transmembrane protein 1) TXNDC1 antibody [C2C3], C-term
Purification:	Purified by antigen-affinity chromatography.

## Target Details

Target:	TMX1
---------	------

## Target Details

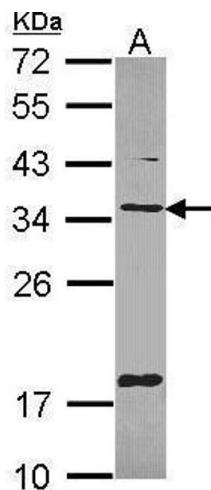
Alternative Name:	thioredoxin related transmembrane protein 1 ( <a href="#">TMX1 Products</a> )
Background:	TXNDC1 is a thioredoxin (TXN, see MIM 187700)-related protein with disulfide reductase activity (Matsuo et al., 2001 [PubMed 11152479]).[supplied by OMIM]  Cellular Localization: Membrane, Single-pass type I membrane protein (Potential) , Endoplasmic reticulum membrane, Single-pass type I membrane protein (Potential)
Molecular Weight:	32 kDa
Gene ID:	81542
UniProt:	<a href="#">Q9H3N1</a>
Pathways:	<a href="#">Cell RedoxHomeostasis</a>

## Application Details

Application Notes:	WB: 1:500-1:3000. ICC/IF: 1:100-1:1000. Optimal dilutions/concentrations should be determined by the researcher. Not tested in other applications.
Comment:	Positive Control: HepG2
Restrictions:	For Research Use only

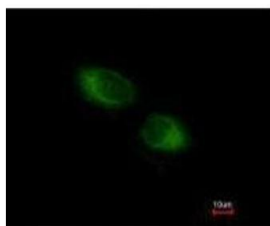
## Handling

Format:	Liquid
Concentration:	1 mg/mL
Buffer:	0.1M Tris-Glycine ( pH 7), 10 % Glycerol, 0.01 % Thimerosal
Preservative:	Thimerosal (Merthiolate)
Precaution of Use:	This product contains Thimerosal (Merthiolate): a POISONOUS AND HAZARDOUS SUBSTANCE which should be handled by trained staff only.
Storage:	4 °C,-20 °C
Storage Comment:	Store as concentrated solution. Centrifuge briefly prior to opening vial. For short-term storage (1-2 weeks), store at 4°C. For long-term storage, aliquot and store at -20°C or below. Avoid multiple freeze-thaw cycles.



#### Western Blotting

**Image 1.** WB Image Sample (30 ug of whole cell lysate) A: Hep G2 , 12% SDS PAGE antibody diluted at 1:1000



Costained with Hoechst 33342



#### Immunofluorescence

**Image 2.** ICC/IF Image Immunofluorescence analysis of methanol-fixed HeLa, using TXNDC1, antibody at 1:500 dilution.