



[Go to Product page](#)

Datasheet for ABIN2856568
anti-GIPC3 antibody (N-Term)

1 Image

Overview

Quantity:	100 µL
Target:	GIPC3
Binding Specificity:	N-Term
Reactivity:	Human
Host:	Rabbit
Clonality:	Polyclonal
Application:	Western Blotting (WB)

Product Details

Immunogen:	Carrier-protein conjugated synthetic peptide encompassing a sequence within the N-terminus region of human GIPC3. The exact sequence is proprietary.
Isotype:	IgG
Cross-Reactivity:	Human
Characteristics:	Rabbit polyclonal antibody to GIPC3 (GIPC PDZ domain containing family, member 3) GIPC3 antibody [N1], N-term
Purification:	Purified by antigen-affinity chromatography.

Target Details

Target:	GIPC3
Alternative Name:	GIPC PDZ domain containing family member 3 (GIPC3 Products)

Target Details

Molecular Weight: 34 kDa

Gene ID: 126326

UniProt: [Q8TF64](#)

Application Details

Application Notes: WB: 1:500-1:3000. Optimal dilutions/concentrations should be determined by the researcher.
Not tested in other applications.

Comment: Positive Control: H1299

Restrictions: For Research Use only

Handling

Format: Liquid

Concentration: 1 mg/mL

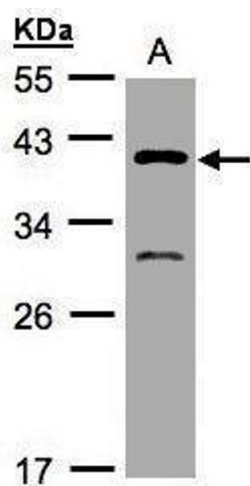
Buffer: 0.1M Tris-Glycine (pH 7), 10 % Glycerol, 0.01 % Thimerosal

Preservative: Thimerosal (Merthiolate)

Precaution of Use: This product contains Thimerosal (Merthiolate): a POISONOUS AND HAZARDOUS SUBSTANCE which should be handled by trained staff only.

Storage: 4 °C, -20 °C

Storage Comment: Store as concentrated solution. Centrifuge briefly prior to opening vial. For short-term storage (1-2 weeks), store at 4°C. For long-term storage, aliquot and store at -20°C or below. Avoid multiple freeze-thaw cycles.



Western Blotting

Image 1. WB Image Sample(30 µg of whole cell lysate)
A:H1299 10% SDS PAGE antibody diluted at 1:500