



[Go to Product page](#)

Datasheet for ABIN2856575
anti-GPR137B antibody (C-Term)

2 Images

Overview

Quantity:	100 µL
Target:	GPR137B
Binding Specificity:	C-Term
Reactivity:	Human
Host:	Rabbit
Clonality:	Polyclonal
Conjugate:	This GPR137B antibody is un-conjugated
Application:	Western Blotting (WB), Immunohistochemistry (Paraffin-embedded Sections) (IHC (p))

Product Details

Immunogen:	Carrier-protein conjugated synthetic peptide encompassing a sequence within the C-terminus region of human TM7SF1/GPR137B. The exact sequence is proprietary.
Isotype:	IgG
Cross-Reactivity:	Human
Characteristics:	Rabbit Polyclonal antibody to TM7SF1/GPR137B (G protein-coupled receptor 137B) TM7SF1/GPR137B antibody [C3], C-term
Purification:	Purified by antigen-affinity chromatography.

Target Details

Target:	GPR137B
---------	---------

Target Details

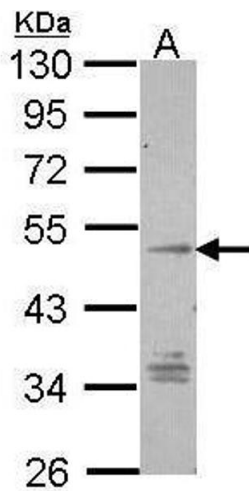
Alternative Name:	G protein-coupled receptor 137B (GPR137B Products)
Background:	Cellular Localization: Membrane, Multi-pass membrane protein
Molecular Weight:	46 kDa
Gene ID:	7107
UniProt:	O60478

Application Details

Application Notes:	WB: 1:500-1:3000. IHC-P: 1:100-1:1000. Optimal dilutions/concentrations should be determined by the researcher. Not tested in other applications.
Comment:	Positive Control: HepG2
Restrictions:	For Research Use only

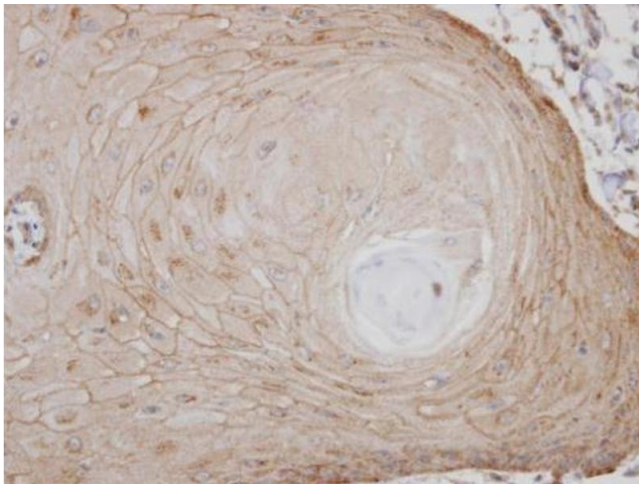
Handling

Format:	Liquid
Concentration:	1 mg/mL
Buffer:	0.1M Tris-Glycine (pH 7), 10 % Glycerol, 0.01 % Thimerosal
Preservative:	Thimerosal (Merthiolate)
Precaution of Use:	This product contains Thimerosal (Merthiolate): a POISONOUS AND HAZARDOUS SUBSTANCE which should be handled by trained staff only.
Storage:	4 °C,-20 °C
Storage Comment:	Store as concentrated solution. Centrifuge briefly prior to opening vial. For short-term storage (1-2 weeks), store at 4°C. For long-term storage, aliquot and store at -20°C or below. Avoid multiple freeze-thaw cycles.



Western Blotting

Image 1. WB Image Sample (30 ug of whole cell lysate) A: Hep G2 , 10% SDS PAGE antibody diluted at 1:1000



Immunohistochemistry

Image 2. IHC-P Image Immunohistochemical analysis of paraffin-embedded BCC2 xenograft, using TM7SF1/GPR137B, antibody at 1:100 dilution.