

Datasheet for ABIN2856577
anti-GPRC6A antibody (C-Term)[Go to Product page](#)

1 Image

Overview

Quantity:	100 µL
Target:	GPRC6A
Binding Specificity:	C-Term
Reactivity:	Human
Host:	Rabbit
Clonality:	Polyclonal
Conjugate:	This GPRC6A antibody is un-conjugated
Application:	Western Blotting (WB)

Product Details

Immunogen:	Carrier-protein conjugated synthetic peptide encompassing a sequence within the C-terminus region of human GPRC6A. The exact sequence is proprietary.
Isotype:	IgG
Characteristics:	Rabbit polyclonal antibody to GPRC6A (G protein-coupled receptor, family C, group 6, member A) GPRC6A antibody [C3], C-term
Purification:	Purified by antigen-affinity chromatography.

Target Details

Target:	GPRC6A
Alternative Name:	GPRC6A (GPRC6A Products)

Target Details

Background: Members of family C of the G protein-coupled receptor (GPCR) superfamily, such as GPRC6A, are characterized by an evolutionarily conserved amino acid-sensing motif linked to an intramembranous 7-transmembrane loop region. Several members of GPCR family C, including GPRC6A, also have a long N-terminal domain (summary by Pi et al., 2005 [PubMed 16199532]).[supplied by OMIM]

Cellular Localization: Cell membrane, Multi-pass membrane protein

Molecular Weight: 105 kDa

Gene ID: 222545

Application Details

Application Notes: Suggested dilution Reference Western blot 1:500-1:3000* Not tested in other applications.
Optimal dilutions/concentrations should be determined by the researcher.Suggested dilutionReferenceWestern blot1:500-1:3000

Comment: Positive Control: Raji

Restrictions: For Research Use only

Handling

Format: Liquid

Concentration: 1 mg/mL

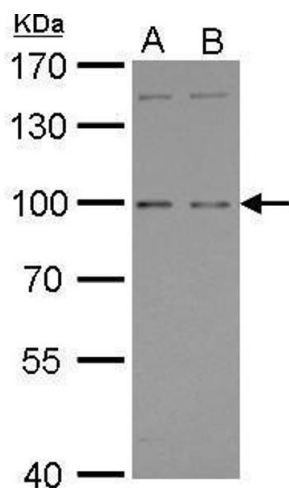
Buffer: 0.1M Tris, 0.1M Glycine, 10 % Glycerol (pH 7). 0.01 % Thimerosal was added as a preservative.

Preservative: Thimerosal (Merthiolate)

Precaution of Use: This product contains Thimerosal (Merthiolate): a POISONOUS AND HAZARDOUS SUBSTANCE which should be handled by trained staff only.

Storage: -20 °C

Storage Comment: Keep as concentrated solution. Aliquot and store at -20°C or below. Avoid multiple freeze-thaw cycles.



Western Blotting

Image 1. WB Image GPRC6A antibody [C3], C-term detects GPRC6A protein by Western blot analysis. A. 30 µg Raji whole cell lysate/extract B. 30 µg K562 whole cell lysate/extract 7.5 % SDS-PAGE GPRC6A antibody [C3], C-term , dilution: 1:500