

Datasheet for ABIN2856583
anti-GADD45G antibody (C-Term)[Go to Product page](#)

2 Images

Overview

Quantity:	100 µL
Target:	GADD45G
Binding Specificity:	C-Term
Reactivity:	Human
Host:	Rabbit
Clonality:	Polyclonal
Conjugate:	This GADD45G antibody is un-conjugated
Application:	Western Blotting (WB), Immunofluorescence (IF), Immunocytochemistry (ICC)

Product Details

Immunogen:	Carrier-protein conjugated synthetic peptide encompassing a sequence within the C-terminus region of human GADD45G. The exact sequence is proprietary.
Isotype:	IgG
Cross-Reactivity:	Human
Characteristics:	Rabbit Polyclonal antibody to GADD45G (growth arrest and DNA-damage-inducible, gamma) GADD45G antibody [C1C3]
Purification:	Purified by antigen-affinity chromatography.

Target Details

Target:	GADD45G
---------	---------

Target Details

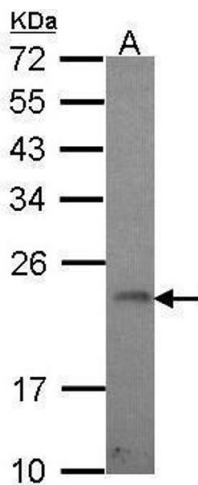
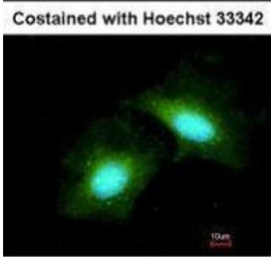
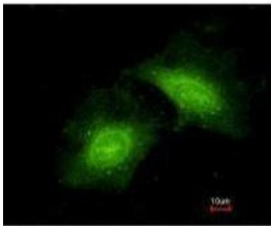
Alternative Name:	growth arrest and DNA damage inducible gamma (GADD45G Products)
Background:	This gene is a member of a group of genes whose transcript levels are increased following stressful growth arrest conditions and treatment with DNA-damaging agents. The protein encoded by this gene responds to environmental stresses by mediating activation of the p38/JNK pathway via MTK1/MEKK4 kinase. The GADD45G is highly expressed in placenta.
Molecular Weight:	17 kDa
Gene ID:	10912
UniProt:	O95257
Pathways:	Cell Division Cycle

Application Details

Application Notes:	WB: 1:500-1:3000. ICC/IF: 1:100-1:1000. Optimal dilutions/concentrations should be determined by the researcher. Not tested in other applications.
Comment:	Positive Control: HeLa
Restrictions:	For Research Use only

Handling

Format:	Liquid
Concentration:	1 mg/mL
Buffer:	0.1M Tris-Glycine (pH 7), 10 % Glycerol, 0.01 % Thimerosal
Preservative:	Thimerosal (Merthiolate)
Precaution of Use:	This product contains Thimerosal (Merthiolate): a POISONOUS AND HAZARDOUS SUBSTANCE which should be handled by trained staff only.
Storage:	4 °C, -20 °C
Storage Comment:	Store as concentrated solution. Centrifuge briefly prior to opening vial. For short-term storage (1-2 weeks), store at 4°C. For long-term storage, aliquot and store at -20°C or below. Avoid multiple freeze-thaw cycles.



Immunofluorescence

Image 1. ICC/IF Image Immunofluorescence analysis of methanol-fixed HeLa, using GADD45 gamma, antibody at 1:200 dilution.

Western Blotting

Image 2. WB Image Sample (30 ug of whole cell lysate) A: Hela 12% SDS PAGE antibody diluted at 1:1000