

Datasheet for ABIN2856586

**anti-Thrombomodulin antibody (C-Term)**[Go to Product page](#)

## 4 Images

## Overview

Quantity:	100 µL
Target:	Thrombomodulin (THBD)
Binding Specificity:	C-Term
Reactivity:	Human
Host:	Rabbit
Clonality:	Polyclonal
Conjugate:	This Thrombomodulin antibody is un-conjugated
Application:	Western Blotting (WB), Immunofluorescence (IF), Immunoprecipitation (IP), Immunocytochemistry (ICC), Immunohistochemistry (Paraffin-embedded Sections) (IHC (p))

## Product Details

Immunogen:	Carrier-protein conjugated synthetic peptide encompassing a sequence within the C-terminus region of human Thrombomodulin. The exact sequence is proprietary.
Isotype:	IgG
Cross-Reactivity:	Human
Characteristics:	Rabbit Polyclonal antibody to Thrombomodulin (thrombomodulin) Thrombomodulin antibody [C3], C-term
Purification:	Purified by antigen-affinity chromatography.

## Target Details

Target:	Thrombomodulin (THBD)
---------	-----------------------

## Target Details

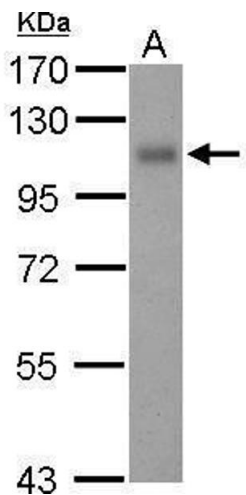
Alternative Name:	thrombomodulin ( <a href="#">THBD Products</a> )
Background:	<p>The protein encoded by this intronless gene is an endothelial-specific type I membrane receptor that binds thrombin. This binding results in the activation of protein C, which degrades clotting factors Va and VIIIa and reduces the amount of thrombin generated. Mutations in this gene are a cause of thromboembolic disease, also known as inherited thrombophilia.</p> <p>Cellular Localization: Membrane, Single-pass type I membrane protein</p>
Molecular Weight:	60 kDa
Gene ID:	7056
UniProt:	<a href="#">P07204</a>

## Application Details

Application Notes:	WB: 1:500-1:3000. ICC/IF: 1:100-1:1000. IHC-P: 1:100-1:1000. IP: 1:100-1:500. Optimal dilutions/concentrations should be determined by the researcher. Not tested in other applications.
Comment:	Validation: Orthogonal
Restrictions:	For Research Use only

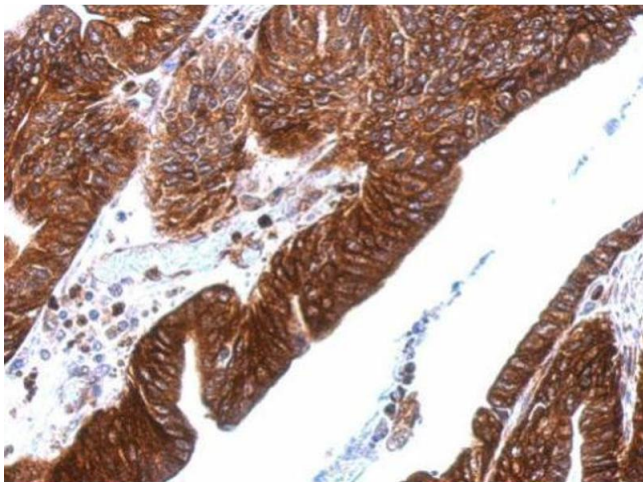
## Handling

Format:	Liquid
Concentration:	1 mg/mL
Buffer:	1XPBS ( pH 7), 20 % Glycerol, 0.025 % ProClin 300
Preservative:	ProClin
Precaution of Use:	This product contains ProClin: a POISONOUS AND HAZARDOUS SUBSTANCE which should be handled by trained staff only.
Storage:	4 °C,-20 °C
Storage Comment:	Store as concentrated solution. Centrifuge briefly prior to opening vial. For short-term storage (1-2 weeks), store at 4°C. For long-term storage, aliquot and store at -20°C or below. Avoid multiple freeze-thaw cycles.



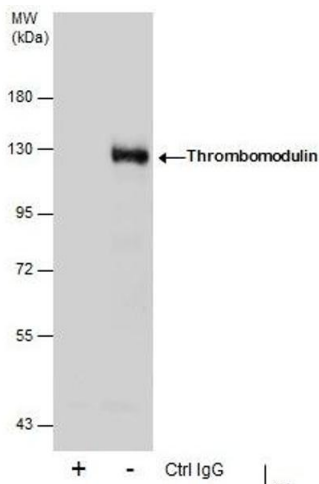
#### Western Blotting

**Image 1.** WB Image Sample (30 ug of whole cell lysate) A: THP-1 7.5% SDS PAGE antibody diluted at 1:500



#### Immunohistochemistry

**Image 2.** IHC-P Image Thrombomodulin antibody [C3], C-term detects THBD protein at cytosol and membrane on human gastric cancer by immunohistochemical analysis. Sample: Paraffin-embedded gastric cancer. Thrombomodulin antibody [C3], C-term, dilution: 1:500.



#### Immunoprecipitation

**Image 3.** IP Image Immunoprecipitation of Thrombomodulin protein from THP-1 whole cell extracts using 5 µg of Thrombomodulin antibody [C3], C-term, Western blot analysis was performed using Thrombomodulin antibody [C3], C-term, EasyBlot anti-Rabbit IgG was used as a secondary reagent.

Please check the [product details page](#) for more images. Overall 4 images are available for ABIN2856586.