

Datasheet for ABIN2856592
anti-C1orf57 antibody (C-Term)[Go to Product page](#)

2 Images

Overview

Quantity:	100 µL
Target:	C1orf57 (NTPCR)
Binding Specificity:	C-Term
Reactivity:	Human
Host:	Rabbit
Clonality:	Polyclonal
Conjugate:	This C1orf57 antibody is un-conjugated
Application:	Western Blotting (WB), Immunofluorescence (IF), Immunocytochemistry (ICC)

Product Details

Immunogen:	Carrier-protein conjugated synthetic peptide encompassing a sequence within the C-terminus region of human C1orf57. The exact sequence is proprietary.
Isotype:	IgG
Cross-Reactivity:	Human
Characteristics:	Rabbit Polyclonal antibody to C1orf57 (nucleoside-triphosphatase, cancer-related) C1orf57 antibody [C2C3], C-term
Purification:	Purified by antigen-affinity chromatography.

Target Details

Target:	C1orf57 (NTPCR)
---------	-----------------

Target Details

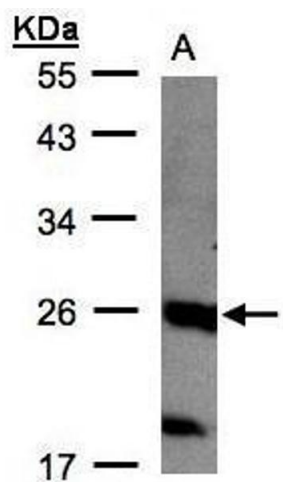
Alternative Name:	nucleoside-triphosphatase, cancer-related (NTPCR Products)
Molecular Weight:	21 kDa
Gene ID:	84284
UniProt:	Q9BSD7

Application Details

Application Notes:	WB: 1:500-1:3000. ICC/IF: 1:100-1:1000. Optimal dilutions/concentrations should be determined by the researcher. Not tested in other applications.
Comment:	Positive Control: Molt-4
Restrictions:	For Research Use only

Handling

Format:	Liquid
Concentration:	0.83 mg/mL
Buffer:	0.1M Tris-Glycine (pH 7), 10 % Glycerol, 0.01 % Thimerosal
Preservative:	Thimerosal (Merthiolate)
Precaution of Use:	This product contains Thimerosal (Merthiolate): a POISONOUS AND HAZARDOUS SUBSTANCE which should be handled by trained staff only.
Storage:	4 °C, -20 °C
Storage Comment:	Store as concentrated solution. Centrifuge briefly prior to opening vial. For short-term storage (1-2 weeks), store at 4°C. For long-term storage, aliquot and store at -20°C or below. Avoid multiple freeze-thaw cycles.



Western Blotting

Image 1. WB Image Sample(30 µg of whole cell lysate)
A:MOLT4, 12% SDS PAGE antibody diluted at 1:1000



Immunofluorescence

Image 2. ICC/IF Image Immunofluorescence analysis of paraformaldehyde-fixed HeLa, using C1orf57, antibody at 1:500 dilution.