

Datasheet for ABIN2856593  
**anti-PFKFB3 antibody (C-Term)**

## 3 Images

[Go to Product page](#)

## Overview

Quantity:	100 µL
Target:	PFKFB3
Binding Specificity:	C-Term
Reactivity:	Human
Host:	Rabbit
Clonality:	Polyclonal
Conjugate:	This PFKFB3 antibody is un-conjugated
Application:	Western Blotting (WB), Immunohistochemistry (Paraffin-embedded Sections) (IHC (p)), Immunoprecipitation (IP)

## Product Details

Immunogen:	Carrier-protein conjugated synthetic peptide encompassing a sequence within the C-terminus region of human PFKFB3. The exact sequence is proprietary.
Isotype:	IgG
Cross-Reactivity:	Human
Characteristics:	Rabbit Polyclonal antibody to PFKFB3 (6-phosphofructo-2-kinase/fructose-2,6-biphosphatase 3) PFKFB3 antibody [C3], C-term
Purification:	Purified by antigen-affinity chromatography.

## Target Details

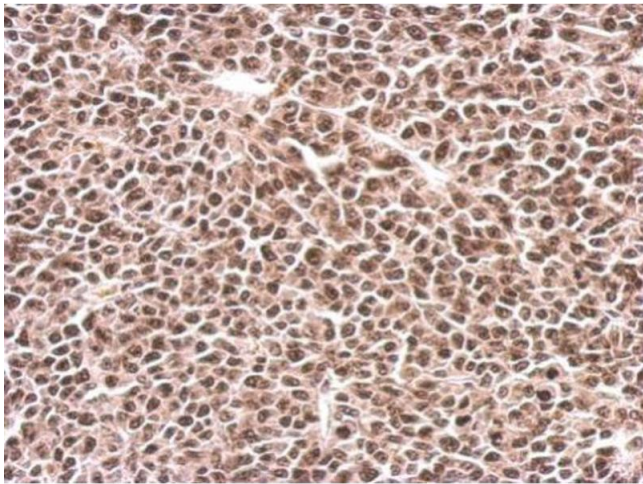
Target:	PFKFB3
Alternative Name:	6-phosphofructo-2-kinase/fructose-2,6-biphosphatase 3 ( <a href="#">PFKFB3 Products</a> )
Molecular Weight:	60 kDa
Gene ID:	5209
UniProt:	<a href="#">Q16875</a>
Pathways:	<a href="#">AMPK Signaling</a> , <a href="#">Regulation of Carbohydrate Metabolic Process</a>

## Application Details

Application Notes:	WB: 1:500-1:3000. IHC-P: 1:100-1:1000. IP: 1:100-1:500. Optimal dilutions/concentrations should be determined by the researcher. Not tested in other applications.
Restrictions:	For Research Use only

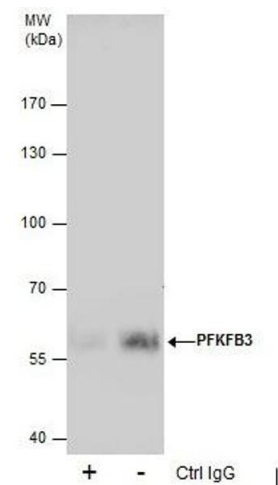
## Handling

Format:	Liquid
Concentration:	0.95 mg/mL
Buffer:	0.1M Tris-Glycine ( pH 7), 10 % Glycerol, 0.01 % Thimerosal
Preservative:	Thimerosal (Merthiolate)
Precaution of Use:	This product contains Thimerosal (Merthiolate): a POISONOUS AND HAZARDOUS SUBSTANCE which should be handled by trained staff only.
Storage:	4 °C,-20 °C
Storage Comment:	Store as concentrated solution. Centrifuge briefly prior to opening vial. For short-term storage (1-2 weeks), store at 4°C. For long-term storage, aliquot and store at -20°C or below. Avoid multiple freeze-thaw cycles.



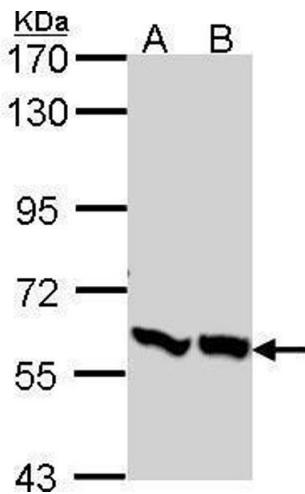
### Immunohistochemistry

**Image 1.** IHC-P Image PFKFB3 antibody [C3], C-term detects PFKFB3 protein at nucleus on BT483 xenograft by immunohistochemical analysis. Sample: Paraffin-embedded BT483 xenograft. PFKFB3 antibody [C3], C-term , dilution: 1:500.



### Immunoprecipitation

**Image 2.** IP Image Immunoprecipitation of PFKFB3 protein from A431 whole cell extracts using 5 µg of PFKFB3 antibody [C3], C-term, Western blot analysis was performed using PFKFB3 antibody [C3], C-term, EasyBlot anti-Rabbit IgG was used as a secondary reagent.



### Western Blotting

**Image 3.** WB Image Sample (30 ug of whole cell lysate) A: A431 , B: H1299 7.5% SDS PAGE PFKFB3 antibody antibody diluted at 1:1000