

Datasheet for ABIN2856596  
**anti-LUZP1 antibody (N-Term)**[Go to Product page](#)

## 1 Image

## Overview

Quantity:	100 µL
Target:	LUZP1
Binding Specificity:	N-Term
Reactivity:	Human
Host:	Rabbit
Clonality:	Polyclonal
Conjugate:	This LUZP1 antibody is un-conjugated
Application:	Western Blotting (WB)

## Product Details

Immunogen:	Carrier-protein conjugated synthetic peptide encompassing a sequence within the N-terminus region of human LUZP1. The exact sequence is proprietary.
Isotype:	IgG
Cross-Reactivity:	Human
Characteristics:	Rabbit polyclonal antibody to LUZP1 (leucine zipper protein 1) leucine zipper protein 1 antibody [N1], N-term
Purification:	Purified by antigen-affinity chromatography.

## Target Details

Target:	LUZP1
---------	-------

## Target Details

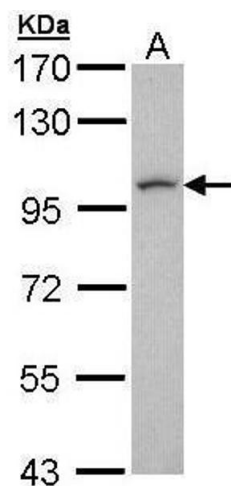
Alternative Name:	leucine zipper protein 1 ( <a href="#">LUZP1 Products</a> )
Background:	<p>This gene encodes a protein that contains a leucine zipper motif. The exact function of the encoded protein is not known. In mice this gene affects neural tube closure. Alternative splicing results in multiple transcript variants.</p> <p>Cellular Localization: Nucleus</p>
Molecular Weight:	120 kDa
Gene ID:	7798
UniProt:	<a href="#">Q86V48</a>
Pathways:	<a href="#">Tube Formation</a>

## Application Details

Application Notes:	WB: 1:500-1:3000. Optimal dilutions/concentrations should be determined by the researcher. Not tested in other applications.
Comment:	Positive Control: H1299
Restrictions:	For Research Use only

## Handling

Format:	Liquid
Concentration:	0.28 mg/mL
Buffer:	0.1M Tris-Glycine ( pH 7), 10 % Glycerol, 0.01 % Thimerosal
Preservative:	Thimerosal (Merthiolate)
Precaution of Use:	This product contains Thimerosal (Merthiolate): a POISONOUS AND HAZARDOUS SUBSTANCE which should be handled by trained staff only.
Storage:	4 °C,-20 °C
Storage Comment:	Store as concentrated solution. Centrifuge briefly prior to opening vial. For short-term storage (1-2 weeks), store at 4°C. For long-term storage, aliquot and store at -20°C or below. Avoid multiple freeze-thaw cycles.



Western Blotting

**Image 1.** WB Image Sample (30 ug of whole cell lysate) A:  
H1299 7.5% SDS PAGE antibody diluted at 1:1000