

Datasheet for ABIN2856600  
**anti-INHBA antibody (C-Term)**



[Go to Product page](#)

3 Images

### Overview

Quantity:	100 µL
Target:	INHBA
Binding Specificity:	C-Term
Reactivity:	Human
Host:	Rabbit
Clonality:	Polyclonal
Conjugate:	This INHBA antibody is un-conjugated
Application:	Western Blotting (WB), Immunocytochemistry (ICC), Immunofluorescence (IF), Immunohistochemistry (Paraffin-embedded Sections) (IHC (p))

### Product Details

Immunogen:	Carrier-protein conjugated synthetic peptide encompassing a sequence within the C-terminus region of human Inhibin beta A. The exact sequence is proprietary.
Isotype:	IgG
Cross-Reactivity:	Human
Characteristics:	Rabbit Polyclonal antibody to Inhibin beta A (inhibin, beta A) Inhibin beta A antibody
Purification:	Purified by antigen-affinity chromatography.
Grade:	KO Validated

## Target Details

---

Target:	INHBA
Alternative Name:	inhibin subunit beta A ( <a href="#">INHBA Products</a> )
Background:	<p>The inhibin beta A subunit joins the alpha subunit to form a pituitary FSH secretion inhibitor. Inhibin has been shown to regulate gonadal stromal cell proliferation negatively and to have tumor-suppressor activity. In addition, serum levels of inhibin have been shown to reflect the size of granulosa-cell tumors and can therefore be used as a marker for primary as well as recurrent disease. Because expression in gonadal and various extragonadal tissues may vary severalfold in a tissue-specific fashion, it is proposed that inhibin may be both a growth/differentiation factor and a hormone. Furthermore, the beta A subunit forms a homodimer, activin A, and also joins with a beta B subunit to form a heterodimer, activin AB, both of which stimulate FSH secretion. Finally, it has been shown that the beta A subunit mRNA is identical to the erythroid differentiation factor subunit mRNA and that only one gene for this mRNA exists in the human genome.</p> <p>Cellular Localization: Secreted</p>
Molecular Weight:	47 kDa
Gene ID:	3624
UniProt:	<a href="#">P08476</a>
Pathways:	<a href="#">Hormone Transport</a> , <a href="#">Peptide Hormone Metabolism</a> , <a href="#">Hormone Activity</a> , <a href="#">Negative Regulation of Hormone Secretion</a> , <a href="#">Autophagy</a>

## Application Details

---

Application Notes:	WB: 1:500-1:3000. ICC/IF: 1:100-1:1000. IHC-P: 1:100-1:1000. Optimal dilutions/concentrations should be determined by the researcher. Not tested in other applications.
Comment:	Validation: KO/KD
Restrictions:	For Research Use only

## Handling

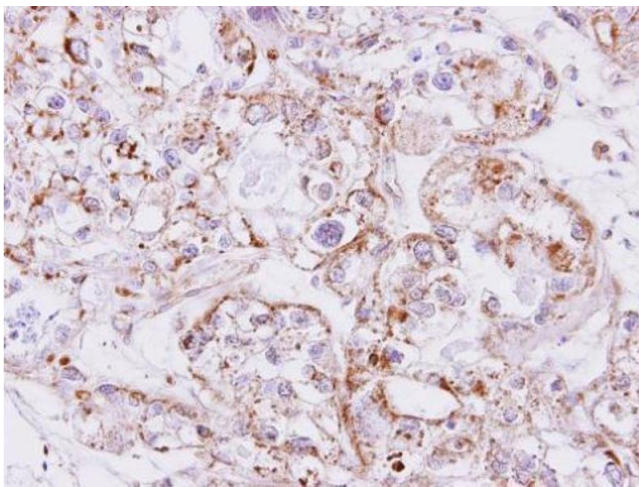
---

Format:	Liquid
Concentration:	0.66 mg/mL
Buffer:	1XPBS pH 7, 20 % Glycerol, 0.025 % ProClin 300

## Handling

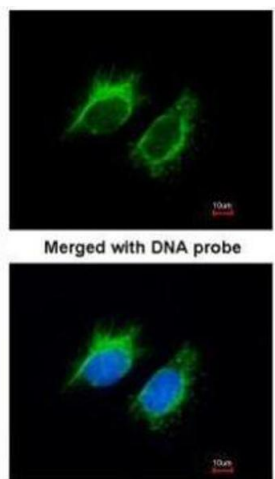
Preservative:	ProClin
Precaution of Use:	This product contains ProClin: a POISONOUS AND HAZARDOUS SUBSTANCE which should be handled by trained staff only.
Storage:	4 °C,-20 °C
Storage Comment:	Store as concentrated solution. Centrifuge briefly prior to opening vial. For short-term storage (1-2 weeks), store at 4°C. For long-term storage, aliquot and store at -20°C or below. Avoid multiple freeze-thaw cycles.

## Images



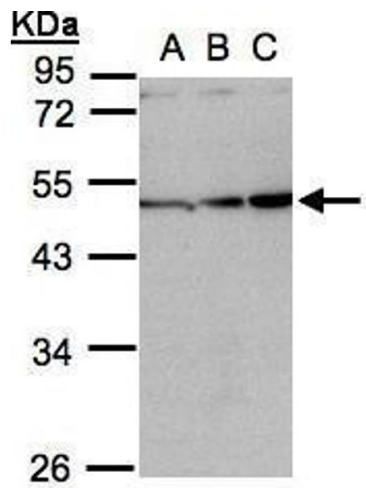
### Immunohistochemistry

**Image 1.** IHC-P Image Immunohistochemical analysis of paraffin-embedded CLEAR CELL OVCA xenograft, using Inhibin beta A, antibody at 1:500 dilution.



### Immunofluorescence

**Image 2.** ICC/IF Image Immunofluorescence analysis of paraformaldehyde-fixed HeLa, using Inhibin beta-A , antibody at 1:200 dilution.



### Western Blotting

**Image 3.** WB Image Sample(30 ug whole cell lysate)  
A:H1299 B:HeLa S3, C:Hep G2 , 10% SDS PAGE antibody  
diluted at 1:1000