

Datasheet for ABIN2856602
anti-CCL1 antibody (C-Term)[Go to Product page](#)

2 Images

Overview

| | |
|----------------------|--|
| Quantity: | 100 µL |
| Target: | CCL1 |
| Binding Specificity: | C-Term |
| Reactivity: | Human |
| Host: | Rabbit |
| Clonality: | Polyclonal |
| Conjugate: | This CCL1 antibody is un-conjugated |
| Application: | Western Blotting (WB), Immunohistochemistry (Paraffin-embedded Sections) (IHC (p)) |

Product Details

| | |
|-------------------|--|
| Immunogen: | Carrier-protein conjugated synthetic peptide encompassing a sequence within the C-terminus region of human I-309. The exact sequence is proprietary. |
| Isotype: | IgG |
| Cross-Reactivity: | Human |
| Characteristics: | Rabbit Polyclonal antibody to I-309 (chemokine (C-C motif) ligand 1) I-309 antibody |
| Purification: | Purified by antigen-affinity chromatography. |

Target Details

| | |
|---------|------|
| Target: | CCL1 |
|---------|------|

Target Details

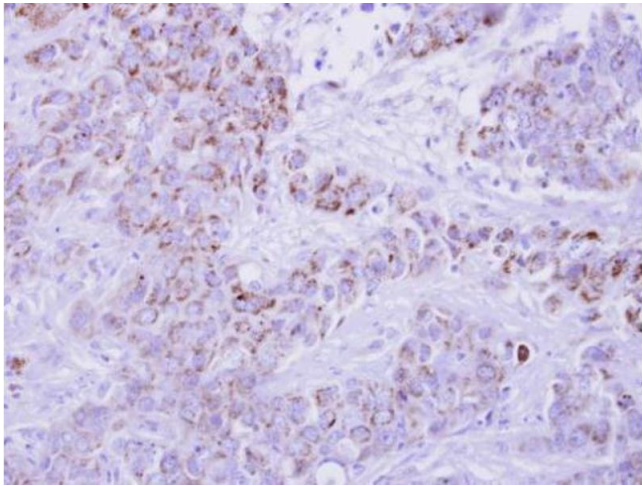
| | |
|-------------------|--|
| Alternative Name: | C-C motif chemokine ligand 1 (CCL1 Products) |
| Background: | <p>This gene is one of several cytokine genes clustered on the q-arm of chromosome 17. Cytokines are a family of secreted proteins involved in immunoregulatory and inflammatory processes. The protein encoded by this gene is structurally related to the CXC subfamily of cytokines. Members of this subfamily are characterized by two cysteines separated by a single amino acid. This cytokine is secreted by activated T cells and displays chemotactic activity for monocytes but not for neutrophils. It binds to the chemokine receptor CCR8.</p> <p>Cellular Localization: Secreted</p> |
| Molecular Weight: | 11 kDa |
| Gene ID: | 6346 |
| UniProt: | P22362 |

Application Details

| | |
|--------------------|---|
| Application Notes: | WB: 1:500-1:3000. IHC-P: 1:100-1:1000. Optimal dilutions/concentrations should be determined by the researcher. Not tested in other applications. |
| Comment: | Positive Control: Molt-4 |
| Restrictions: | For Research Use only |

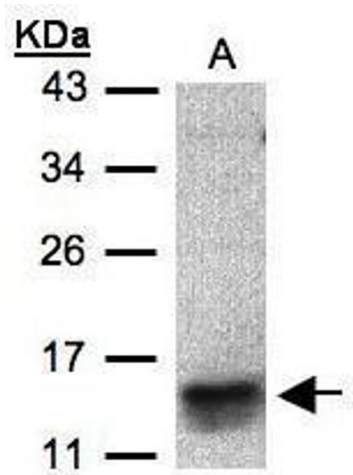
Handling

| | |
|--------------------|--|
| Format: | Liquid |
| Concentration: | 0.55 mg/mL |
| Buffer: | 0.1M Tris-Glycine (pH 7), 10 % Glycerol, 0.01 % Thimerosal |
| Preservative: | Thimerosal (Merthiolate) |
| Precaution of Use: | This product contains Thimerosal (Merthiolate): a POISONOUS AND HAZARDOUS SUBSTANCE which should be handled by trained staff only. |
| Storage: | 4 °C,-20 °C |
| Storage Comment: | Store as concentrated solution. Centrifuge briefly prior to opening vial. For short-term storage (1-2 weeks), store at 4°C. For long-term storage, aliquot and store at -20°C or below. Avoid multiple freeze-thaw cycles. |



Immunohistochemistry

Image 1. IHC-P Image I-309 antibody detects CCL1 protein at cytosol on human breast cancer by immunohistochemical analysis. Sample: Paraffin-embedded breast cancer. I-309 antibody , dilution: 1:250.



Western Blotting

Image 2. WB Image Sample(30 µg of whole cell lysate) A:MOLT4, 15% SDS PAGE antibody diluted at 1:500