

Datasheet for ABIN2856604  
**anti-CMTM6 antibody (C-Term)**

## 3 Images

[Go to Product page](#)

## Overview

Quantity:	100 µL
Target:	CMTM6
Binding Specificity:	C-Term
Reactivity:	Human
Host:	Rabbit
Clonality:	Polyclonal
Conjugate:	This CMTM6 antibody is un-conjugated
Application:	Western Blotting (WB), Immunohistochemistry (Paraffin-embedded Sections) (IHC (p)), Immunocytochemistry (ICC), Immunofluorescence (IF)

## Product Details

Immunogen:	Carrier-protein conjugated synthetic peptide encompassing a sequence within the C-terminus region of human CMTM6. The exact sequence is proprietary.
Isotype:	IgG
Cross-Reactivity:	Human
Characteristics:	Rabbit Polyclonal antibody to CMTM6 (CKLF-like MARVEL transmembrane domain containing 6) CMTM6 antibody [C1C3]
Purification:	Purified by antigen-affinity chromatography.

## Target Details

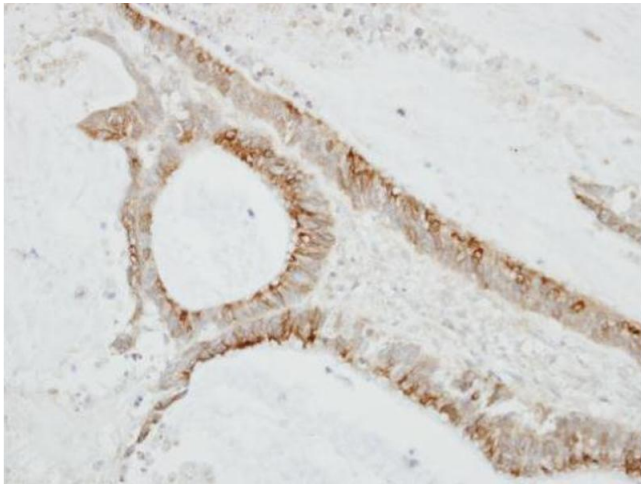
Target:	CMTM6
Alternative Name:	CKLF like MARVEL transmembrane domain containing 6 ( <a href="#">CMTM6 Products</a> )
Background:	<p>This gene belongs to the chemokine-like factor gene superfamily, a novel family that is similar to the chemokine and transmembrane 4 superfamilies. This gene is one of several chemokine-like factor genes located in a cluster on chromosome 3. This gene is widely expressed in many tissues, but the exact function of the encoded protein is unknown.</p> <p>Cellular Localization: Membrane</p>
Molecular Weight:	20 kDa
Gene ID:	54918
UniProt:	<a href="#">Q9NX76</a>

## Application Details

Application Notes:	WB: 1:500-1:3000. ICC/IF: 1:100-1:1000. IHC-P: 1:100-1:1000. Optimal dilutions/concentrations should be determined by the researcher. Not tested in other applications.
Comment:	Positive Control: Raji , NCI-H929
Restrictions:	For Research Use only

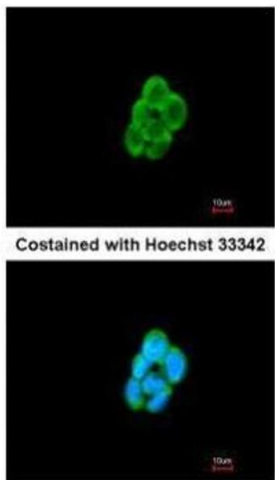
## Handling

Format:	Liquid
Concentration:	1.24 mg/mL
Buffer:	1XPBS pH 7, 20 % Glycerol, 0.025 % ProClin 300
Preservative:	ProClin
Precaution of Use:	This product contains ProClin: a POISONOUS AND HAZARDOUS SUBSTANCE which should be handled by trained staff only.
Storage:	4 °C,-20 °C
Storage Comment:	Store as concentrated solution. Centrifuge briefly prior to opening vial. For short-term storage (1-2 weeks), store at 4°C. For long-term storage, aliquot and store at -20°C or below. Avoid multiple freeze-thaw cycles.



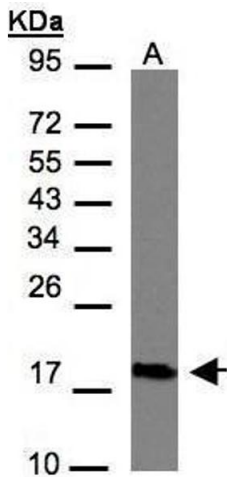
**Immunohistochemistry**

**Image 1.** IHC-P Image Immunohistochemical analysis of paraffin-embedded TW2.6 xenograft, using CMTM6, antibody at 1:100 dilution.



**Immunofluorescence**

**Image 2.** ICC/IF Image Immunofluorescence analysis of methanol-fixed A431, using CMTM6, antibody at 1:200 dilution.



**Western Blotting**

**Image 3.** WB Image Sample(30 µg of whole cell lysate) A:Hep G2, 12% SDS PAGE antibody diluted at 1:1000