

Datasheet for ABIN2856609
anti-IL-24 antibody (C-Term)

3 Images

[Go to Product page](#)

Overview

Quantity:	100 µL
Target:	IL-24 (IL24)
Binding Specificity:	C-Term
Reactivity:	Human
Host:	Rabbit
Clonality:	Polyclonal
Conjugate:	This IL-24 antibody is un-conjugated
Application:	Western Blotting (WB), Immunohistochemistry (Paraffin-embedded Sections) (IHC (p))

Product Details

Immunogen:	Carrier-protein conjugated synthetic peptide encompassing a sequence within the C-terminus region of human IL24. The exact sequence is proprietary.
Isotype:	IgG
Cross-Reactivity:	Human
Characteristics:	Rabbit polyclonal antibody to Interleukin-24 (interleukin 24) Interleukin-24 antibody [C2C3], C-term
Purification:	Purified by antigen-affinity chromatography.

Target Details

Target:	IL-24 (IL24)
---------	--------------

Target Details

Alternative Name:	interleukin 24 (IL24 Products)
Background:	<p>This gene encodes a member of the IL10 family of cytokines. It was identified as a gene induced during terminal differentiation in melanoma cells. The protein encoded by this gene can induce apoptosis selectively in various cancer cells. Overexpression of this gene leads to elevated expression of several GADD family genes, which correlates with the induction of apoptosis. The phosphorylation of mitogen-activated protein kinase 14 (MAPK7/P38), and heat shock 27 kDa protein 1 (HSPB2/HSP27) are found to be induced by this gene in melanoma cells, but not in normal immortal melanocytes. Alternatively spliced transcript variants encoding distinct isoforms have been reported.</p> <p>Cellular Localization: Secreted</p>
Molecular Weight:	24 kDa
Gene ID:	11009
UniProt:	Q13007
Pathways:	Cellular Response to Molecule of Bacterial Origin , Positive Regulation of Endopeptidase Activity , Autophagy

Application Details

Application Notes:	WB: 1:500-1:3000. IHC-P: 1:100-1:1000. Optimal dilutions/concentrations should be determined by the researcher. Not tested in other applications.
Comment:	Positive Control: A431
Restrictions:	For Research Use only

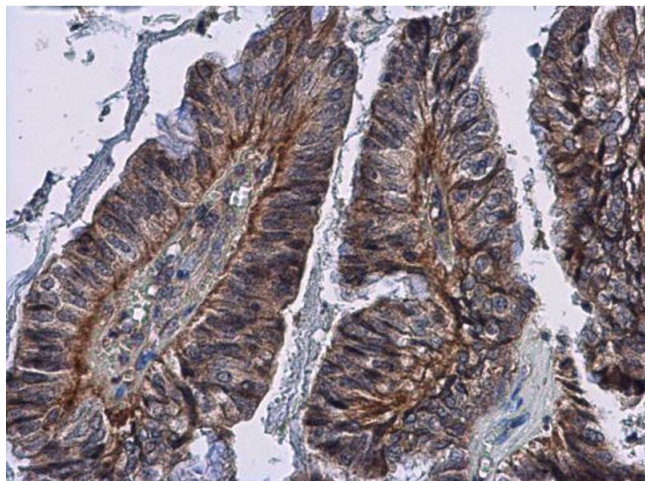
Handling

Format:	Liquid
Concentration:	0.46 mg/mL
Buffer:	0.1M Tris-Glycine (pH 7), 10 % Glycerol, 0.01 % Thimerosal
Preservative:	Thimerosal (Merthiolate)
Precaution of Use:	This product contains Thimerosal (Merthiolate): a POISONOUS AND HAZARDOUS SUBSTANCE which should be handled by trained staff only.
Storage:	4 °C,-20 °C

Handling

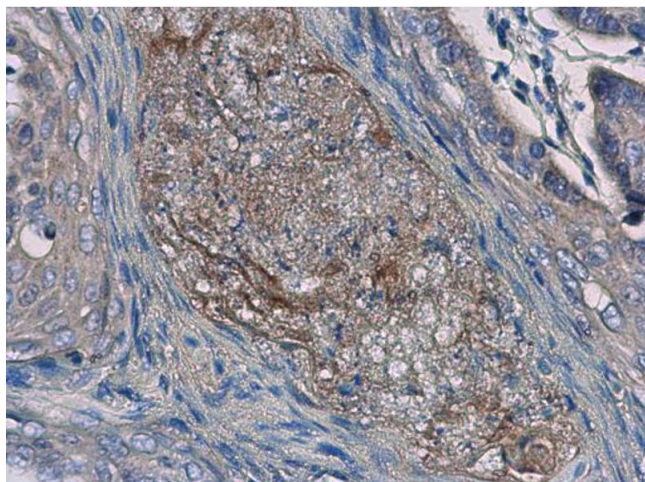
Storage Comment: Store as concentrated solution. Centrifuge briefly prior to opening vial. For short-term storage (1-2 weeks), store at 4°C. For long-term storage, aliquot and store at -20°C or below. Avoid multiple freeze-thaw cycles.

Images



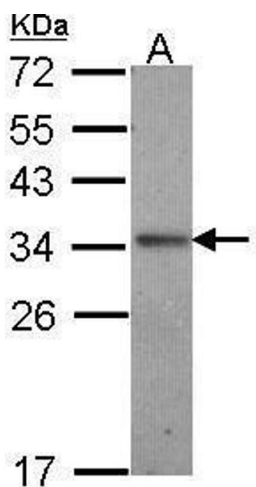
Immunohistochemistry

Image 1. IHC-P Image Interleukin-24 antibody [C2C3], C-term detects Interleukin-24 protein at cytoplasm in human cervical carcinoma by immunohistochemical analysis. Sample: Paraffin-embedded human cervical carcinoma. Interleukin-24 antibody [C2C3], C-term, diluted at 1:500.



Immunohistochemistry

Image 2. IHC-P Image Interleukin-24 antibody [C2C3], C-term detects Interleukin-24 protein at cytoplasm in human esophageal cancer by immunohistochemical analysis. Sample: Paraffin-embedded human esophageal cancer. Interleukin-24 antibody [C2C3], C-term, diluted at 1:400.



Western Blotting

Image 3. WB Image Sample (30 ug of whole cell lysate) A: A431, 12% SDS PAGE antibody diluted at 1:1000