

Datasheet for ABIN2856610
anti-HLA-DMB antibody (C-Term)[Go to Product page](#)

2 Images

Overview

| | |
|----------------------|--|
| Quantity: | 100 µL |
| Target: | HLA-DMB |
| Binding Specificity: | C-Term |
| Reactivity: | Human |
| Host: | Rabbit |
| Clonality: | Polyclonal |
| Application: | Western Blotting (WB), Immunohistochemistry (Paraffin-embedded Sections) (IHC (p)) |

Product Details

| | |
|-------------------|--|
| Immunogen: | Carrier-protein conjugated synthetic peptide encompassing a sequence within the C-terminus region of human HLA-DMB. The exact sequence is proprietary. |
| Isotype: | IgG |
| Cross-Reactivity: | Human |
| Characteristics: | Rabbit Polyclonal antibody to HLA-DMB (major histocompatibility complex, class II, DM beta) HLA-DMB antibody [C2C3], C-term |
| Purification: | Purified by antigen-affinity chromatography. |

Target Details

| | |
|-------------------|--|
| Target: | HLA-DMB |
| Alternative Name: | major histocompatibility complex, class II, DM beta (HLA-DMB Products) |

Target Details

Background: HLA-DMB belongs to the HLA class II beta chain paralogues. This class II molecule is a heterodimer consisting of an alpha (DMA) and a beta (DMB) chain, both anchored in the membrane. It is located in intracellular vesicles. DM plays a central role in the peptide loading of MHC class II molecules by helping to release the CLIP (class II-associated invariant chain peptide) molecule from the peptide binding site. Class II molecules are expressed in antigen presenting cells (APC: B lymphocytes, dendritic cells, macrophages). The beta chain is approximately 26-28 kDa and its gene contains 6 exons. Exon one encodes the leader peptide, exons 2 and 3 encode the two extracellular domains, exon 4 encodes the transmembrane domain and exon 5 encodes the cytoplasmic tail.

Cellular Localization: Late endosome membrane , Lysosome membrane

Molecular Weight: 29 kDa

Gene ID: 3109

UniProt: [P28068](#)

Pathways: [Cancer Immune Checkpoints](#), [Human Leukocyte Antigen \(HLA\) in Adaptive Immune Response](#)

Application Details

Application Notes: WB: 1:500-1:3000. IHC-P: 1:100-1:1000. Optimal dilutions/concentrations should be determined by the researcher. Not tested in other applications.

Comment: Positive Control: HLA-DMB transfected 293T

Restrictions: For Research Use only

Handling

Format: Liquid

Concentration: 1 mg/mL

Buffer: 0.1M Tris-Glycine (pH 7), 10 % Glycerol, 0.01 % Thimerosal

Preservative: Thimerosal (Merthiolate)

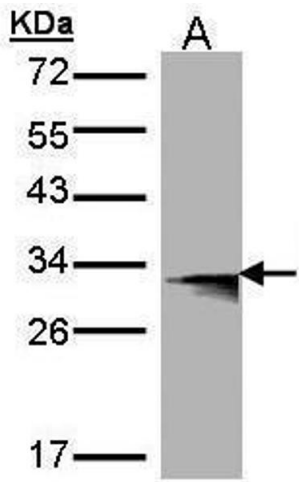
Precaution of Use: This product contains Thimerosal (Merthiolate): a POISONOUS AND HAZARDOUS SUBSTANCE which should be handled by trained staff only.

Storage: 4 °C,-20 °C

Storage Comment: Store as concentrated solution. Centrifuge briefly prior to opening vial. For short-term storage

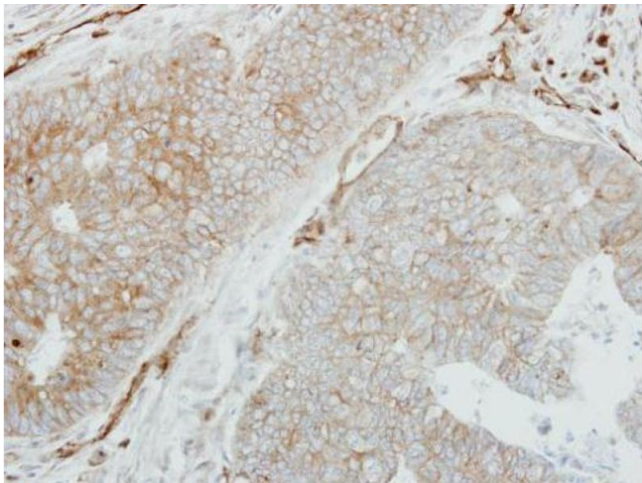
(1-2 weeks), store at 4°C. For long-term storage, aliquot and store at -20°C or below. Avoid multiple freeze-thaw cycles.

Validation report #101762 for Western Blotting (WB)



Western Blotting

Image 1. WB Image Western Blot analysis of HLA-DMB expression in transfected 293T cell line by HLA-DMB polyclonal antibody. A:Non-transfected lysate. B:HLA-DMB transfected lysate. 12% SDS PAGE antibody diluted at 1:500



Immunohistochemistry

Image 2. IHC-P Image Immunohistochemical analysis of paraffin-embedded human colon carcinoma, using HLA-DMB, antibody at 1:250 dilution.