



[Go to Product page](#)

Datasheet for ABIN2856612  
**anti-KLRC4 antibody (N-Term)**

1 Image

Overview

|                      |                                      |
|----------------------|--------------------------------------|
| Quantity:            | 100 µL                               |
| Target:              | KLRC4                                |
| Binding Specificity: | N-Term                               |
| Reactivity:          | Human                                |
| Host:                | Rabbit                               |
| Clonality:           | Polyclonal                           |
| Conjugate:           | This KLRC4 antibody is un-conjugated |
| Application:         | Western Blotting (WB)                |

Product Details

|                             |  |
|-----------------------------|--|
| Immunogen:                  | Carrier-protein conjugated synthetic peptide encompassing a sequence within the N-terminus region of human KLRC4. The exact sequence is proprietary. |
| Isotype:                    | IgG  |
| Cross-Reactivity:           | Chimpanzee   |
| Cross-Reactivity (Details): | Chimpanzee (100 %)   |
| Characteristics:            | Rabbit polyclonal antibody to KLRC4 (killer cell lectin-like receptor subfamily C, member 4)<br>KLRC4 antibody [N1N2], N-term                        |
| Purification:               | Purified by antigen-affinity chromatography.   |

## Target Details

---

|                   |   |
|-------------------|---|
| Target:           | KLRC4   |
| Alternative Name: | KLRC4 ( <a href="#">KLRC4 Products</a> )  |
| Background:       | <p>Natural killer (NK) cells are lymphocytes that can mediate lysis of certain tumor cells and virus-infected cells without previous activation. They can also regulate specific humoral and cell-mediated immunity. NK cells preferentially express several calcium-dependent (C-type) lectins, which have been implicated in the regulation of NK cell function. KLRC4 is a member of the NKG2 group which are expressed primarily in natural killer (NK) cells and encodes a family of transmembrane proteins characterized by a type II membrane orientation (extracellular C terminus) and the presence of a C-type lectin domain. The NKG2 gene family is located within the NK complex, a region that contains several C-type lectin genes preferentially expressed on NK cells. The 3' end of the KLRC4 transcript includes the first non-coding exon found at the 5' end of the adjacent D12S2489E gene transcript.</p> <p>Cellular Localization: Membrane, Single-pass type II membrane protein</p> |
| Molecular Weight: | 18 kDa  |
| Gene ID:          | 8302  |

## Application Details

---

|                    |   |
|--------------------|---|
| Application Notes: | <p>Suggested dilution Reference Western blot 1:500-1:3000* Not tested in other applications.</p> <p>*Optimal dilutions/concentrations should be determined by the researcher.Suggested dilutionReferenceWestern blot1:500-1:3000*</p> |
| Comment:           | Positive Control: 293T  |
| Restrictions:      | For Research Use only   |

## Handling

---

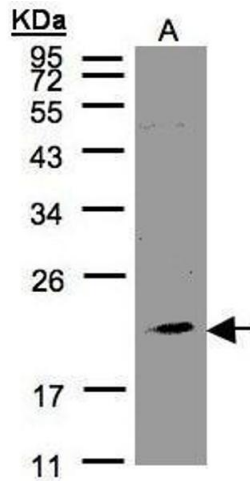
|                    |  |
|--------------------|--|
| Format:            | Liquid   |
| Concentration:     | 0.15 mg/mL   |
| Buffer:            | 0.1M Tris, 0.1M Glycine, 10 % Glycerol ( pH 7). 0.01 % Thimerosal was added as a preservative.                                     |
| Preservative:      | Thimerosal (Merthiolate)   |
| Precaution of Use: | This product contains Thimerosal (Merthiolate): a POISONOUS AND HAZARDOUS SUBSTANCE which should be handled by trained staff only. |

## Handling

Storage: -20 °C

Storage Comment: Keep as concentrated solution. Aliquot and store at -20°C or below. Avoid multiple freeze-thaw cycles.

## Images



### Western Blotting

**Image 1.** WB Image Sample(30 µg of whole cell lysate)

A:293T 12% SDS PAGE antibody diluted at 1:1000