

Datasheet for ABIN2856619

anti-CAMK1D antibody

5 Images

[Go to Product page](#)

Overview

Quantity:	100 µL
Target:	CAMK1D
Reactivity:	Human
Host:	Rabbit
Clonality:	Polyclonal
Application:	Western Blotting (WB), Immunofluorescence (IF), Immunohistochemistry (Paraffin-embedded Sections) (IHC (p)), Immunocytochemistry (ICC)

Product Details

Immunogen:	Recombinant protein encompassing a sequence within the center region of human CaMKI delta. The exact sequence is proprietary.
Isotype:	IgG
Cross-Reactivity:	Human, Mouse
Characteristics:	Rabbit Polyclonal antibody to CaMK1D (calcium/calmodulin-dependent protein kinase ID) CaMK1D antibody [N1C3]
Purification:	Purified by antigen-affinity chromatography.

Target Details

Target:	CAMK1D
Alternative Name:	calcium/calmodulin dependent protein kinase ID (CAMK1D Products)
Background:	This gene encodes a member of the Ca ²⁺ /calmodulin-dependent protein kinase 1 subfamily of

Target Details

serine/threonine kinases. The encoded protein may be involved in the regulation of granulocyte function through the chemokine signal transduction pathway. Alternatively spliced transcript variants encoding different isoforms of this gene have been described.

Cellular Localization: Cytoplasm (Probable) , Nucleus (Probable)

Molecular Weight: 43 kDa

Gene ID: 57118

UniProt: [Q8IU85](#)

Application Details

Application Notes: WB: 1:500-1:3000. ICC/IF: 1:100-1:1000. IHC-P: 1:100-1:1000. Optimal dilutions/concentrations should be determined by the researcher. Not tested in other applications.

Comment: Positive Control: Mouse brain

Restrictions: For Research Use only

Handling

Format: Liquid

Concentration: 0.73 mg/mL

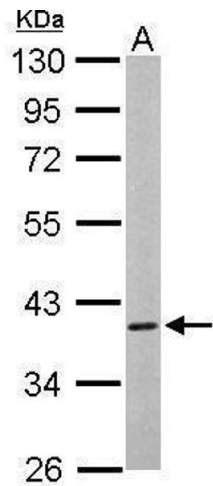
Buffer: 0.1M Tris-Glycine (pH 7), 10 % Glycerol, 0.01 % Thimerosal

Preservative: Thimerosal (Merthiolate)

Precaution of Use: This product contains Thimerosal (Merthiolate): a POISONOUS AND HAZARDOUS SUBSTANCE which should be handled by trained staff only.

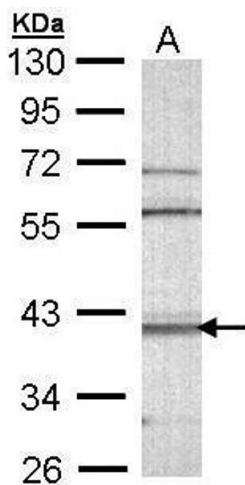
Storage: 4 °C,-20 °C

Storage Comment: Store as concentrated solution. Centrifuge briefly prior to opening vial. For short-term storage (1-2 weeks), store at 4°C. For long-term storage, aliquot and store at -20°C or below. Avoid multiple freeze-thaw cycles.



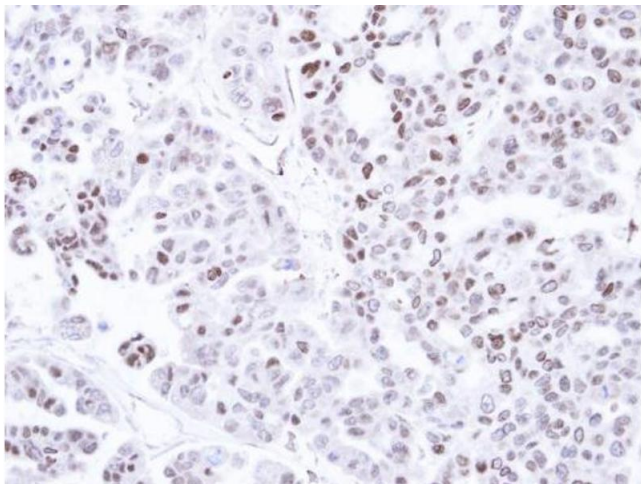
Western Blotting

Image 1. WB Image Sample (50 ug of whole cell lysate) A:
Mouse brain 10% SDS PAGE antibody diluted at 1:1000



Western Blotting

Image 2. WB Image Sample (30 ug of whole cell lysate) A:
Molt-4 , 10% SDS PAGE antibody diluted at 1:1000



Immunohistochemistry

Image 3. IHC-P Image Immunohistochemical analysis of
paraffin-embedded OVCAR3 xenograft, using CAMK1D,
antibody at 1:500 dilution.

Please check the [product details page](#) for more images. Overall 5 images are available for ABIN2856619.