

Datasheet for ABIN2856620

anti-PFN2 antibody

4 Images

[Go to Product page](#)

Overview

Quantity:	100 µL
Target:	PFN2
Reactivity:	Human
Host:	Rabbit
Clonality:	Polyclonal
Conjugate:	This PFN2 antibody is un-conjugated
Application:	Western Blotting (WB), Immunohistochemistry (Paraffin-embedded Sections) (IHC (p))

Product Details

Immunogen:	Recombinant protein encompassing a sequence within the center region of human Profilin 2. The exact sequence is proprietary.
Isotype:	IgG
Specificity:	This antibody may cross-react with human Profilin 1.
Cross-Reactivity:	Human, Mouse, Rat
Characteristics:	Rabbit Polyclonal antibody to Profilin 2 (profilin 2) Profilin 2 antibody
Purification:	Purified by antigen-affinity chromatography.

Target Details

Target:	PFN2
---------	------

Target Details

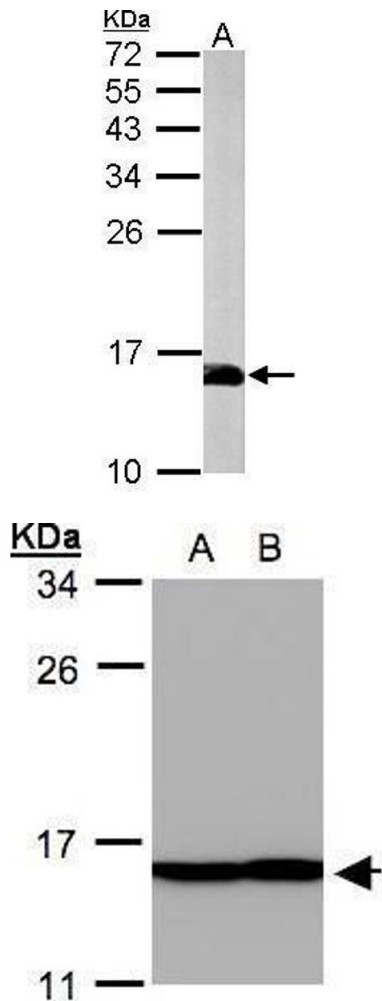
Alternative Name:	profilin 2 (PFN2 Products)
Background:	<p>The protein encoded by this gene is a ubiquitous actin monomer-binding protein belonging to the profilin family. It is thought to regulate actin polymerization in response to extracellular signals. There are two alternatively spliced transcript variants encoding different isoforms described for this gene.</p> <p>Cellular Localization: Cytoplasm , cytoskeleton</p>
Molecular Weight:	15 kDa
Gene ID:	5217
UniProt:	P35080
Pathways:	Regulation of Actin Filament Polymerization , Synaptic Vesicle Exocytosis

Application Details

Application Notes:	WB: 1:500-1:3000. IHC-P: 1:100-1:1000. Optimal dilutions/concentrations should be determined by the researcher. Not tested in other applications.
Comment:	Positive Control: A431 , H1299 , Mouse brain , rat brain
Restrictions:	For Research Use only

Handling

Format:	Liquid
Concentration:	1 mg/mL
Buffer:	0.1M Tris-Glycine (pH 7), 10 % Glycerol, 0.01 % Thimerosal
Preservative:	Thimerosal (Merthiolate)
Precaution of Use:	This product contains Thimerosal (Merthiolate): a POISONOUS AND HAZARDOUS SUBSTANCE which should be handled by trained staff only.
Storage:	4 °C,-20 °C
Storage Comment:	Store as concentrated solution. Centrifuge briefly prior to opening vial. For short-term storage (1-2 weeks), store at 4°C. For long-term storage, aliquot and store at -20°C or below. Avoid multiple freeze-thaw cycles.

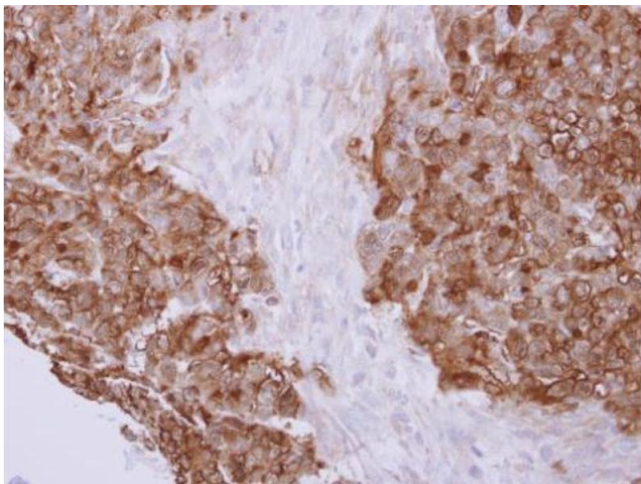


Western Blotting

Image 1. WB Image Sample (50 ug of whole cell lysate) A: mouse brain 15% SDS PAGE antibody diluted at 1:1000

Western Blotting

Image 2. WB Image Sample(30 ug whole cell lysate) A: A431, B: H1299 12% SDS PAGE antibody diluted at 1:500



Immunohistochemistry

Image 3. IHC-P Image Profilin 2 antibody detects PFN2 protein at cytoplasm on human colon carcinoma by immunohistochemical analysis. Sample: Paraffin-embedded colon carcinoma. Profilin 2 antibody , dilution: 1:500.

Please check the [product details page](#) for more images. Overall 4 images are available for ABIN2856620.