

Datasheet for ABIN2856622

anti-RAB2B antibody

4 Images

[Go to Product page](#)

Overview

Quantity:	100 µL
Target:	RAB2B
Reactivity:	Human
Host:	Rabbit
Clonality:	Polyclonal
Conjugate:	This RAB2B antibody is un-conjugated
Application:	Western Blotting (WB), Immunocytochemistry (ICC), Immunofluorescence (IF), Immunohistochemistry (Paraffin-embedded Sections) (IHC (p))

Product Details

Immunogen:	Full length human RAB2B Recombinant protein.
Isotype:	IgG
Cross-Reactivity:	Human, Mouse
Characteristics:	Rabbit Polyclonal antibody to RAB2B (RAB2B, member RAS oncogene family) RAB2B antibody
Purification:	Purified by antigen-affinity chromatography.

Target Details

Target:	RAB2B
Alternative Name:	RAB2B, member RAS oncogene family (RAB2B Products)

Target Details

Background: Members of the Rab protein family are nontransforming monomeric GTP-binding proteins of the Ras superfamily that contain 4 highly conserved regions involved in GTP binding and hydrolysis. Rab proteins are prenylated, membrane-bound proteins involved in vesicular fusion and trafficking, see MIM 179508.[supplied by OMIM]

Cellular Localization: Cell membrane, Lipid-anchor, Cytoplasmic side (Potential) , Endoplasmic reticulum membrane (Potential) , Golgi apparatus membrane

Molecular Weight: 24 kDa

Gene ID: 84932

UniProt: [Q8WUD1](#)

Application Details

Application Notes: WB: 1:500-1:3000. ICC/IF: 1:100-1:1000. IHC-P: 1:100-1:1000. Optimal dilutions/concentrations should be determined by the researcher. Not tested in other applications.

Comment: Positive Control: HepG2

Restrictions: For Research Use only

Handling

Format: Liquid

Concentration: 0.83 mg/mL

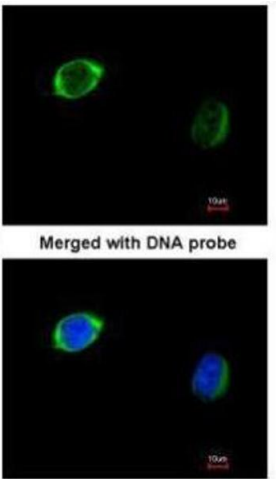
Buffer: 0.1M Tris-Glycine (pH 7), 10 % Glycerol, 0.01 % Thimerosal

Preservative: Thimerosal (Merthiolate)

Precaution of Use: This product contains Thimerosal (Merthiolate): a POISONOUS AND HAZARDOUS SUBSTANCE which should be handled by trained staff only.

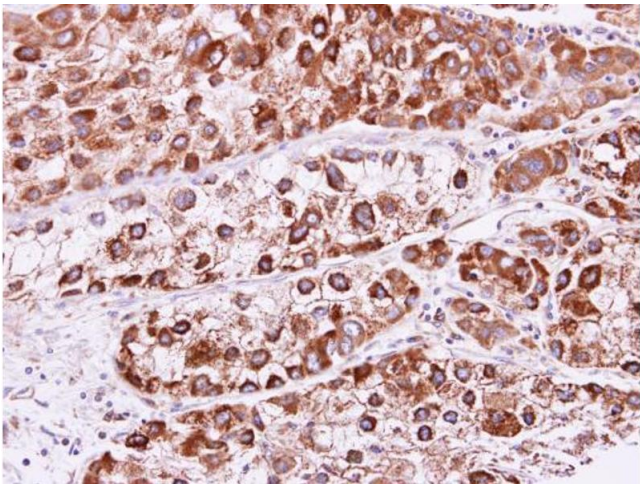
Storage: 4 °C, -20 °C

Storage Comment: Store as concentrated solution. Centrifuge briefly prior to opening vial. For short-term storage (1-2 weeks), store at 4°C. For long-term storage, aliquot and store at -20°C or below. Avoid multiple freeze-thaw cycles.



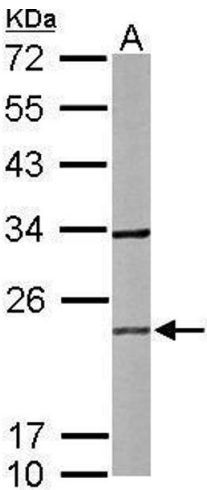
Immunofluorescence

Image 1. ICC/IF Image Immunofluorescence analysis of paraformaldehyde-fixed HeLa, using RAB2B, antibody at 1:200 dilution.



Immunohistochemistry

Image 2. IHC-P Image RAB2B antibody detects RAB2B protein at cytoplasm and membrane on human liver carcinoma by immunohistochemical analysis. Sample: Paraffin-embedded liver carcinoma. RAB2B antibody , dilution: 1:250.



Western Blotting

Image 3. WB Image Sample (50 ug of whole cell lysate) A: mouse brain 12% SDS PAGE antibody diluted at 1:1000

Please check the [product details page](#) for more images. Overall 4 images are available for ABIN2856622.