



[Go to Product page](#)

Datasheet for ABIN2856625

anti-TENC1 antibody (C-Term)

1 Image

Overview

Quantity:	100 µL
Target:	TENC1
Binding Specificity:	C-Term
Reactivity:	Human
Host:	Rabbit
Clonality:	Polyclonal
Conjugate:	This TENC1 antibody is un-conjugated
Application:	Western Blotting (WB), Immunohistochemistry (Frozen Sections) (IHC (fro))

Product Details

Immunogen:	Recombinant protein encompassing a sequence within the C-terminus region of human TENC1. The exact sequence is proprietary.
Isotype:	IgG
Cross-Reactivity:	Human, Mouse
Characteristics:	Rabbit polyclonal antibody to TENC1 (tensin like C1 domain containing phosphatase (tensin 2)) TENC1 antibody [C2C3], C-term
Purification:	Purified by antigen-affinity chromatography.

Target Details

Target:	TENC1
---------	-------

Target Details

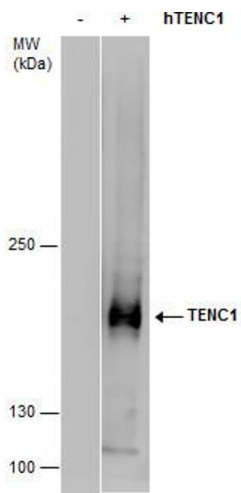
Alternative Name:	tensin 2 (TENC1 Products)
Background:	<p>The protein encoded by this gene belongs to the tensin family. Tensin is a focal adhesion molecule that binds to actin filaments and participates in signaling pathways. This protein plays a role in regulating cell migration. Alternative splicing occurs at this locus and three transcript variants encoding three distinct isoforms have been identified.</p> <p>Cellular Localization: Cell junction , focal adhesion , Cell membrane, Peripheral membrane protein, Cytoplasmic side</p>
Molecular Weight:	153 kDa
Gene ID:	23371
UniProt:	Q63HR2

Application Details

Application Notes:	WB: 1:1000-1:10000. Optimal dilutions/concentrations should be determined by the researcher. Not tested in other applications.
Comment:	Positive Control: human TENC1-transfected 293T cells
Restrictions:	For Research Use only

Handling

Format:	Liquid
Concentration:	1 mg/mL
Buffer:	0.1M Tris-Glycine (pH 7), 10 % Glycerol, 0.01 % Thimerosal
Preservative:	Thimerosal (Merthiolate)
Precaution of Use:	This product contains Thimerosal (Merthiolate): a POISONOUS AND HAZARDOUS SUBSTANCE which should be handled by trained staff only.
Storage:	4 °C,-20 °C
Storage Comment:	Store as concentrated solution. Centrifuge briefly prior to opening vial. For short-term storage (1-2 weeks), store at 4°C. For long-term storage, aliquot and store at -20°C or below. Avoid multiple freeze-thaw cycles.



Western Blotting

Image 1. WB Image TENC1 antibody detects TENC1 protein by western blot analysis. 293T mock transfected (-) or transfected with a construct expressing human TENC1 (+). 5 % SDS-PAGE TENC1 antibody , dilution: 1:5000