

Datasheet for ABIN2856626  
**anti-FGG antibody**



[Go to Product page](#)

7 Images

## Overview

Quantity:	100 µL
Target:	FGG
Reactivity:	Human
Host:	Rabbit
Clonality:	Polyclonal
Conjugate:	This FGG antibody is un-conjugated
Application:	Western Blotting (WB), Immunoprecipitation (IP), Immunocytochemistry (ICC), Immunofluorescence (IF), Immunohistochemistry (Paraffin-embedded Sections) (IHC (p))

## Product Details

Immunogen:	Recombinant protein encompassing a sequence within the center region of human Fibrinogen gamma. The exact sequence is proprietary.
Isotype:	IgG
Cross-Reactivity:	Cow, Human, Mouse, Rat
Characteristics:	Rabbit Polyclonal antibody to Fibrinogen gamma (fibrinogen gamma chain) Fibrinogen gamma antibody
Purification:	Purified by antigen-affinity chromatography.

## Target Details

Target:	FGG
Alternative Name:	fibrinogen gamma chain ( <a href="#">FGG Products</a> )

## Target Details

**Background:** The protein encoded by this gene is the gamma component of fibrinogen, a blood-borne glycoprotein comprised of three pairs of nonidentical polypeptide chains. Following vascular injury, fibrinogen is cleaved by thrombin to form fibrin which is the most abundant component of blood clots. In addition, various cleavage products of fibrinogen and fibrin regulate cell adhesion and spreading, display vasoconstrictor and chemotactic activities, and are mitogens for several cell types. Mutations in this gene lead to several disorders, including dysfibrinogenemia, hypofibrinogenemia and thrombophilia. Alternative splicing results in two transcript variants encoding different isoforms.

Cellular Localization: Secreted

**Molecular Weight:** 52 kDa

**Gene ID:** 2266

**UniProt:** [P02679](#)

## Application Details

**Application Notes:** WB: 1:500-1:20000. ICC/IF: 1:100-1:1000. IHC-P: 1:100-1:1000. IP: 1:100-1:500. Optimal dilutions/concentrations should be determined by the researcher. Not tested in other applications.

**Comment:** Positive Control: rat plasma

**Restrictions:** For Research Use only

## Handling

**Format:** Liquid

**Concentration:** 1.77 mg/mL

**Buffer:** 1XPBS ( pH 7), 1 % BSA, 20 % Glycerol, 0.025 % ProClin 300

**Preservative:** ProClin

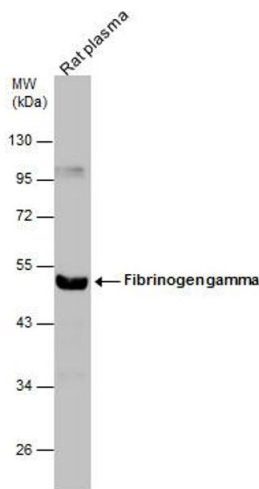
**Precaution of Use:** This product contains ProClin: a POISONOUS AND HAZARDOUS SUBSTANCE which should be handled by trained staff only.

**Storage:** 4 °C,-20 °C

**Storage Comment:** Store as concentrated solution. Centrifuge briefly prior to opening vial. For short-term storage (1-2 weeks), store at 4°C. For long-term storage, aliquot and store at -20°C or below. Avoid

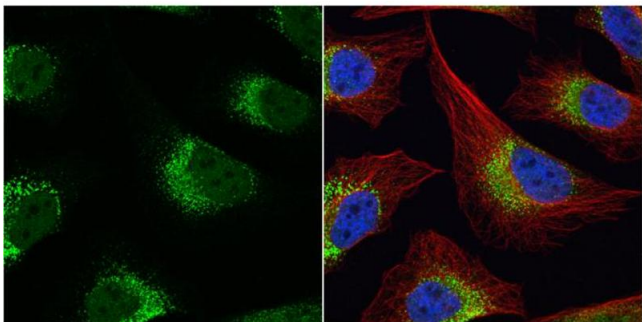
multiple freeze-thaw cycles.

Images



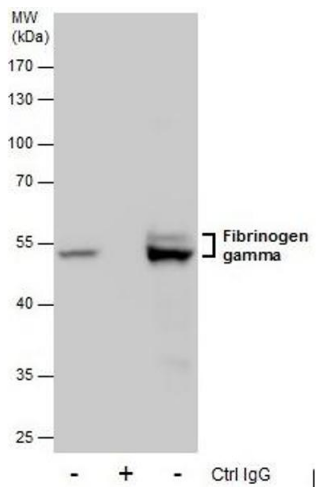
Western Blotting

**Image 1.** WB Image Rat tissue extract (50 µg) was separated by 10% SDS-PAGE, and the membrane was blotted with Fibrinogen gamma antibody , diluted at 1:500.



Immunofluorescence

**Image 2.** ICC/IF Image Fibrinogen gamma antibody detects Fibrinogen gamma protein at cytoplasm by immunofluorescent analysis. Sample: HeLa cells were fixed in 4% paraformaldehyde at RT for 15 min. Green: Fibrinogen gamma protein stained by Fibrinogen gamma antibody , diluted at 1:500. Red: alpha Tubulin, a cytoskeleton marker, stained by alpha Tubulin antibody [B-5-1-2] , diluted at 1:10000. Blue: Hoechst 33342 staining.



Immunoprecipitation

**Image 3.** IP Image Immunoprecipitation of Fibrinogen gamma protein from HepG2 whole cell extracts using 5 µg of Fibrinogen gamma antibody, Western blot analysis was performed using Fibrinogen gamma antibody, EasyBlot anti-Rabbit IgG was used as a secondary reagent.

Please check the [product details page](#) for more images. Overall 7 images are available for ABIN2856626.