



Datasheet for ABIN2856628

anti-TVP23C/FAM18B2 antibody (Internal Region)



[Go to Product page](#)

1 Image

Overview

Quantity:	100 µL
Target:	TVP23C/FAM18B2 (TVP23C)
Binding Specificity:	Internal Region
Reactivity:	Human
Host:	Rabbit
Clonality:	Polyclonal
Conjugate:	This TVP23C/FAM18B2 antibody is un-conjugated
Application:	Western Blotting (WB)

Product Details

Immunogen:	Carrier-protein conjugated synthetic peptide encompassing a sequence within the center region of human FAM18B. The exact sequence is proprietary.
Isotype:	IgG
Characteristics:	Rabbit polyclonal antibody to FAM18B (family with sequence similarity 18, member B) FAM18B antibody [N2C2], Internal
Purification:	Purified by antigen-affinity chromatography.

Target Details

Target:	TVP23C/FAM18B2 (TVP23C)
Alternative Name:	FAM18B (TVP23C Products)

Target Details

Background: Cellular Localization: Membrane, Multi-pass membrane protein

Molecular Weight: 24 kDa

Gene ID: 51030

Application Details

Application Notes: Suggested dilution Reference Western blot 1:500-1:3000* Not tested in other applications.
Optimal dilutions/concentrations should be determined by the researcher.Suggested dilutionReferenceWestern blot1:500-1:3000

Comment: Positive Control: HeLa

Restrictions: For Research Use only

Handling

Format: Liquid

Concentration: 1 mg/mL

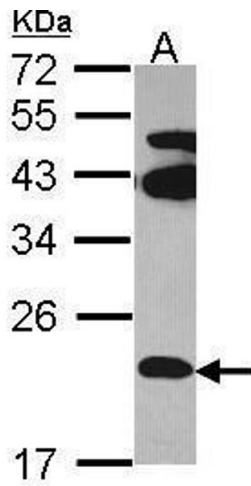
Buffer: 0.1M Tris, 0.1M Glycine, 10 % Glycerol (pH 7). 0.01 % Thimerosal was added as a preservative.

Preservative: Thimerosal (Merthiolate)

Precaution of Use: This product contains Thimerosal (Merthiolate): a POISONOUS AND HAZARDOUS SUBSTANCE which should be handled by trained staff only.

Storage: -20 °C

Storage Comment: Keep as concentrated solution. Aliquot and store at -20°C or below. Avoid multiple freeze-thaw cycles.



Western Blotting

Image 1. WB Image Sample (30 ug of whole cell lysate) A:
Hela 12% SDS PAGE FAM18B antibody antibody diluted at
1:1000