

Datasheet for ABIN2856631
anti-CEACAM5 antibody[Go to Product page](#)

3 Images

Overview

Quantity:	100 µL
Target:	CEACAM5
Reactivity:	Human
Host:	Rabbit
Clonality:	Polyclonal
Conjugate:	This CEACAM5 antibody is un-conjugated
Application:	Immunofluorescence (IF), Western Blotting (WB), Immunohistochemistry (Paraffin-embedded Sections) (IHC (p)), Immunocytochemistry (ICC)

Product Details

Immunogen:	Recombinant protein encompassing a sequence within the center region of human CD66e. The exact sequence is proprietary.
Isotype:	IgG
Cross-Reactivity:	Human
Characteristics:	Rabbit Polyclonal antibody to CD66e (carcinoembryonic antigen-related cell adhesion molecule 5) CD66e antibody
Purification:	Purified by antigen-affinity chromatography.

Target Details

Target:	CEACAM5
---------	---------

Target Details

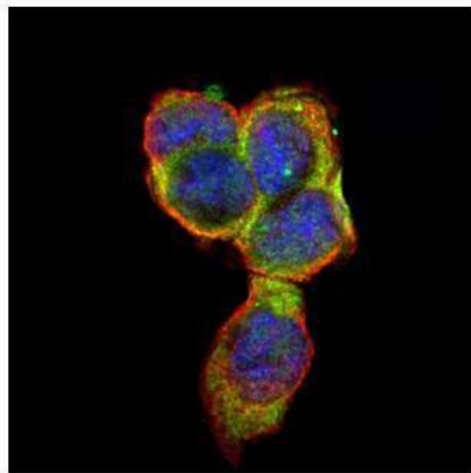
Alternative Name:	carcinoembryonic antigen related cell adhesion molecule 5 (CEACAM5 Products)
Background:	Members of the CEACAM subfamily, including CEACAM5, belong to the CEA gene family. For general information on the CEA gene family, see CEACAM1 (MIM 109770).[supplied by OMIM] Cellular Localization: Cell membrane , GPI-anchor
Molecular Weight:	77 kDa
Gene ID:	1048
UniProt:	P06731

Application Details

Application Notes:	WB: 1:1000-1:10000. ICC/IF: 1:100-1:1000. IHC-P: 1:100-1:1000. Optimal dilutions/concentrations should be determined by the researcher. Not tested in other applications.
Comment:	Positive Control: MCF-7
Restrictions:	For Research Use only

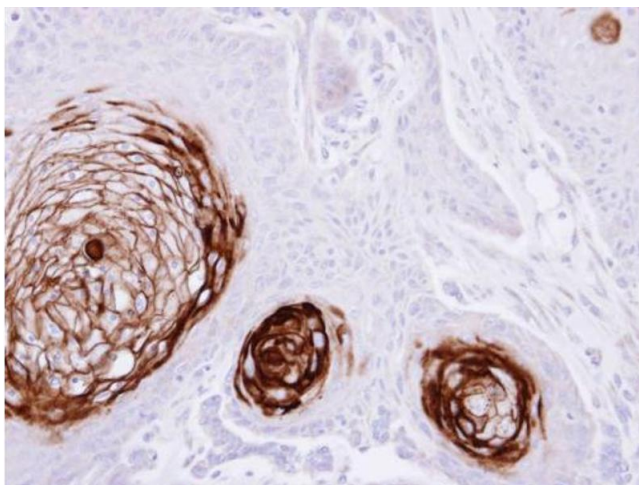
Handling

Format:	Liquid
Concentration:	1 mg/mL
Buffer:	0.1M Tris-Glycine (pH 7), 10 % Glycerol, 0.01 % Thimerosal
Preservative:	Thimerosal (Merthiolate)
Precaution of Use:	This product contains Thimerosal (Merthiolate): a POISONOUS AND HAZARDOUS SUBSTANCE which should be handled by trained staff only.
Storage:	4 °C,-20 °C
Storage Comment:	Store as concentrated solution. Centrifuge briefly prior to opening vial. For short-term storage (1-2 weeks), store at 4°C. For long-term storage, aliquot and store at -20°C or below. Avoid multiple freeze-thaw cycles.



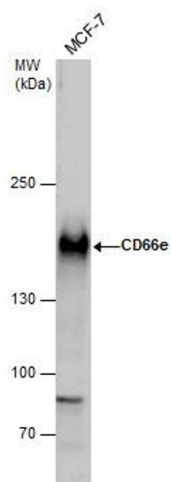
Immunofluorescence

Image 1. ICC/IF Image Confocal immunofluorescence analysis (Olympus FV10i) of paraformaldehyde-fixed A431, using CD66e, antibody (Green) at 1:500 dilution. Alpha-tubulin filaments were labeled with (Red) at 1:2000.



Immunohistochemistry

Image 2. IHC-P Image Immunohistochemical analysis of paraffin-embedded SG xenograft, using CD66e, antibody at 1:500 dilution.



Western Blotting

Image 3. WB Image CD66e antibody detects CD66e protein by western blot analysis. Whole cell extracts (30 µg) was separated by 5% SDS-PAGE, and the membrane was blotted with CD66e antibody, diluted by 1:5000.