

Datasheet for ABIN2856632
anti-KCNJ3 antibody (Center)

2 Images

[Go to Product page](#)

Overview

Quantity:	100 µL
Target:	KCNJ3
Binding Specificity:	Center
Reactivity:	Human, Mouse
Host:	Rabbit
Clonality:	Polyclonal
Conjugate:	This KCNJ3 antibody is un-conjugated
Application:	Western Blotting (WB), Immunohistochemistry (Paraffin-embedded Sections) (IHC (p))

Product Details

Immunogen:	Recombinant protein encompassing a sequence within the center region of human GIRK1. The exact sequence is proprietary.
Isotype:	IgG
Cross-Reactivity:	Rhesus Monkey, Guinea Pig
Cross-Reactivity (Details):	Rhesus Monkey (100 %), Guinea pig (100 %)
Characteristics:	Rabbit polyclonal antibody to GIRK1 (potassium inwardly-rectifying channel, subfamily J, member 3) GIRK1 antibody [N3C3]
Purification:	Purified by antigen-affinity chromatography.

Target Details

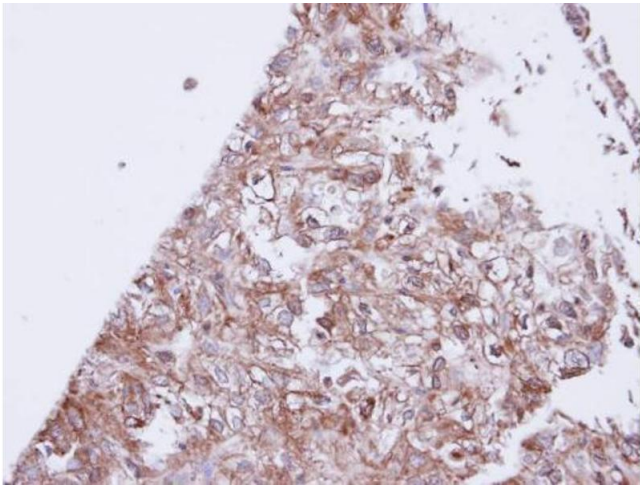
Target:	KCNJ3
Alternative Name:	GIRK1 (KCNJ3 Products)
Background:	<p>Potassium channels are present in most mammalian cells, where they participate in a wide range of physiologic responses. The protein encoded by this gene is an integral membrane protein and inward-rectifier type potassium channel. The encoded protein, which has a greater tendency to allow potassium to flow into a cell rather than out of a cell, is controlled by G-proteins and plays an important role in regulating heartbeat. It associates with three other G-protein-activated potassium channels to form a heteromultimeric pore-forming complex.</p> <p>Cellular Localization: Membrane, Multi-pass membrane protein</p>
Molecular Weight:	57 kDa
Gene ID:	3760

Application Details

Application Notes:	<p>Suggested dilution Reference IHC (Formalin-fixed paraffin-embedded sections) 1:100-1:1000* Western blot 1:500-1:3000* Not tested in other applications. *Optimal dilutions/concentrations should be determined by the researcher.Suggested dilutionReferenceIHC (Formalin-fixed paraffin-embedded sections)1:100-1:1000* Western blot1:500-1:3000*</p>
Comment:	Positive Control: 293T , A431 , H1299 , HeLa , HepG2 , Molt-4 , Raji
Restrictions:	For Research Use only

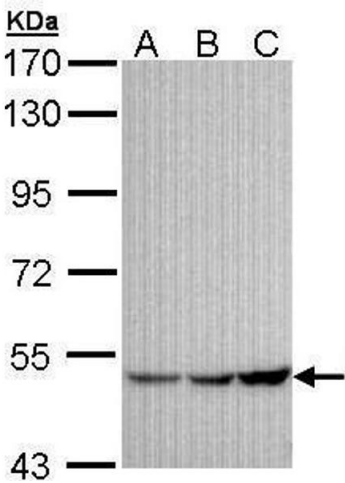
Handling

Format:	Liquid
Concentration:	0.7 mg/mL
Buffer:	0.1M Tris, 0.1M Glycine, 10 % Glycerol (pH 7). 0.01 % Thimerosal was added as a preservative.
Preservative:	Thimerosal (Merthiolate)
Precaution of Use:	This product contains Thimerosal (Merthiolate): a POISONOUS AND HAZARDOUS SUBSTANCE which should be handled by trained staff only.
Storage:	-20 °C
Storage Comment:	Keep as concentrated solution. Aliquot and store at -20°C or below. Avoid multiple freeze-thaw cycles.



Immunohistochemistry

Image 1. IHC-P Image Immunohistochemical analysis of paraffin-embedded DU145 xenograft, using GIRK1, antibody at 1:100 dilution.



Western Blotting

Image 2. WB Image Sample (30 ug of whole cell lysate)
A:A431 , B: H1299 C: Hela 7.5% SDS PAGE antibody diluted at 1:1000