

Datasheet for ABIN2856633
anti-RPA1 antibody (C-Term)

7 Images

[Go to Product page](#)

Overview

Quantity:	100 µL
Target:	RPA1
Binding Specificity:	C-Term
Reactivity:	Human
Host:	Rabbit
Clonality:	Polyclonal
Conjugate:	This RPA1 antibody is un-conjugated
Application:	Western Blotting (WB), Immunofluorescence (IF), Immunoprecipitation (IP), Immunohistochemistry (Paraffin-embedded Sections) (IHC (p)), Immunocytochemistry (ICC)

Product Details

Immunogen:	Recombinant protein encompassing a sequence within the C-terminus region of human RPA70. The exact sequence is proprietary.
Isotype:	IgG
Cross-Reactivity:	Human, Mouse
Characteristics:	Rabbit Polyclonal antibody to RPA70 (replication protein A1, 70 kDa) RPA70 antibody [C1C3]
Purification:	Purified by antigen-affinity chromatography.

Target Details

Target:	RPA1
---------	------

Target Details

Alternative Name:	replication protein A1 (RPA1 Products)
Background:	<p>Plays an essential role in several cellular processes in DNA metabolism including replication, recombination and DNA repair. Binds and subsequently stabilizes single-stranded DNA intermediates and thus prevents complementary DNA from reannealing. Functions as component of the alternative replication protein A complex (aRPA). aRPA binds single-stranded DNA and probably plays a role in DNA repair, it does not support chromosomal DNA replication and cell cycle progression through S-phase. In vitro, aRPA cannot promote efficient priming by DNA polymerase alpha but supports DNA polymerase delta synthesis in the presence of PCNA and replication factor C (RFC), the dual incision/excision reaction of nucleotide excision repair and RAD51-dependent strand exchange.</p> <p>Cellular Localization: Nucleus</p>
Molecular Weight:	68 kDa
Gene ID:	6117
UniProt:	P27694
Pathways:	Telomere Maintenance , DNA Damage Repair , Mitotic G1-G1/S Phases , DNA Replication , Chromatin Binding , Synthesis of DNA

Application Details

Application Notes:	WB: 1:500-1:3000. ICC/IF: 1:100-1:1000. IHC-P: 1:100-1:1000. IP: 1:100-1:500. Optimal dilutions/concentrations should be determined by the researcher. Not tested in other applications.
Comment:	Positive Control: Mouse liver , 293T , A431 , HeLa , HepG2
Restrictions:	For Research Use only

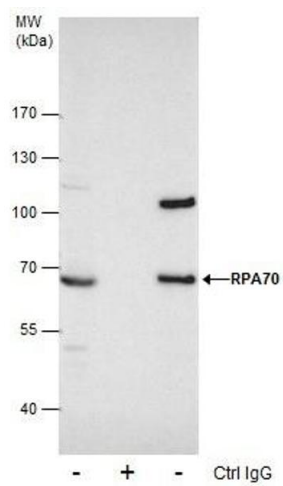
Handling

Format:	Liquid
Concentration:	0.4 mg/mL
Buffer:	1XPBS (pH 7), 1 % BSA, 20 % Glycerol, 0.025 % ProClin 300
Preservative:	ProClin
Precaution of Use:	This product contains ProClin: a POISONOUS AND HAZARDOUS SUBSTANCE which should be

Handling

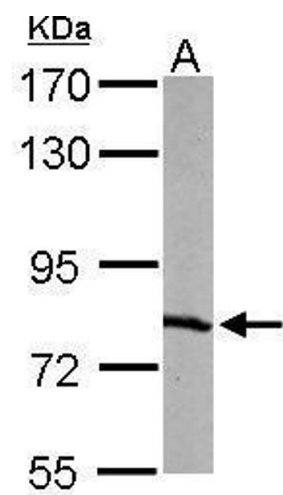
	handled by trained staff only.
Storage:	4 °C,-20 °C
Storage Comment:	Store as concentrated solution. Centrifuge briefly prior to opening vial. For short-term storage (1-2 weeks), store at 4°C. For long-term storage, aliquot and store at -20°C or below. Avoid multiple freeze-thaw cycles.

Images



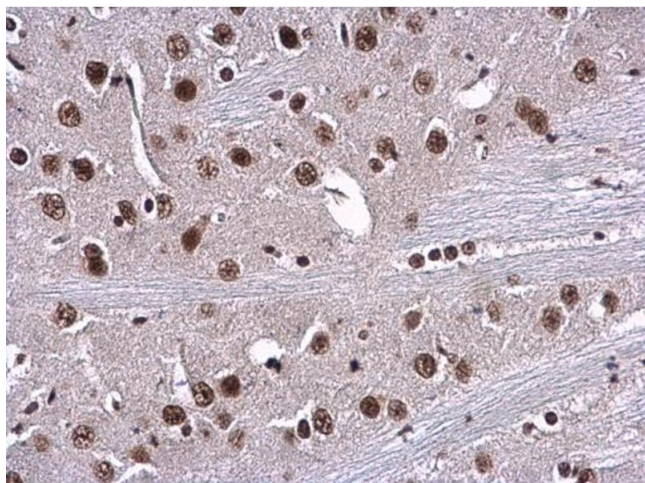
Immunoprecipitation

Image 1. IP Image Immunoprecipitation of RPA70 protein from 293T whole cell extracts using 5 µg of RPA70 antibody [C1C3], Western blot analysis was performed using RPA70 antibody [C1C3], EasyBlot anti-Rabbit IgG was used as a secondary reagent.



Western Blotting

Image 2. WB Image Sample (50 ug of whole cell lysate) A: mouse liver 7.5% SDS PAGE antibody diluted at 1:1000



Immunohistochemistry

Image 3. IHC-P Image RPA70 antibody [C1C3] detects RPA1 protein at nucleus in mouse brain by immunohistochemical analysis. Sample: Paraffin-embedded mouse brain. RPA70 antibody [C1C3] , diluted at 1:500.

Please check the [product details page](#) for more images. Overall 7 images are available for ABIN2856633.