

Datasheet for ABIN2856635
anti-alpha Tubulin antibody

4 Images

[Go to Product page](#)

Overview

Quantity:	100 µL
Target:	alpha Tubulin (TUBA1)
Reactivity:	Human
Host:	Rabbit
Clonality:	Polyclonal
Conjugate:	This alpha Tubulin antibody is un-conjugated
Application:	Western Blotting (WB), Immunohistochemistry (Paraffin-embedded Sections) (IHC (p)), Immunofluorescence (IF), Immunocytochemistry (ICC)

Product Details

Immunogen:	Recombinant protein encompassing a sequence within the center region of human alpha Tubulin. The exact sequence is proprietary.
Isotype:	IgG
Cross-Reactivity:	Human, Mouse, Rat
Characteristics:	Rabbit Polyclonal antibody to alpha Tubulin (tubulin, alpha 1b) alpha Tubulin antibody
Purification:	Purified by antigen-affinity chromatography.

Target Details

Target:	alpha Tubulin (TUBA1)
Alternative Name:	alpha Tubulin (TUBA1 Products)

Target Details

Background: Tubulin is the major constituent of microtubules. It binds two moles of GTP, one at an exchangeable site on the beta chain and one at a non-exchangeable site on the alpha-chain.

Gene ID: 10376

Pathways: [Microtubule Dynamics](#)

Application Details

Application Notes: WB: 1:500-1:3000. ICC/IF: 1:100-1:1000. IHC-P: 1:100-1:1000. Optimal dilutions/concentrations should be determined by the researcher. Not tested in other applications.

Comment: Positive Control: NIH-3T3 , 293T , A431 , HeLa , HepG2

Restrictions: For Research Use only

Handling

Format: Liquid

Concentration: 0.81 mg/mL

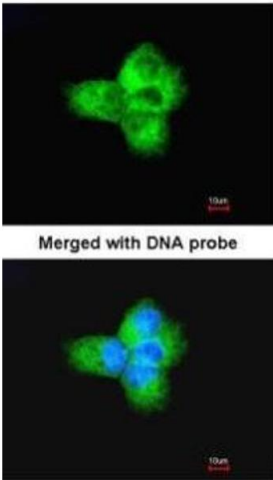
Buffer: 0.1M Tris-Glycine (pH 7), 10 % Glycerol, 0.01 % Thimerosal

Preservative: Thimerosal (Merthiolate)

Precaution of Use: This product contains Thimerosal (Merthiolate): a POISONOUS AND HAZARDOUS SUBSTANCE which should be handled by trained staff only.

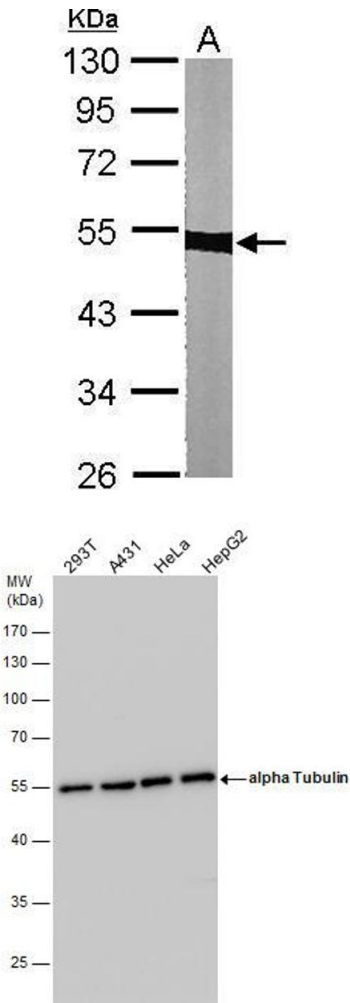
Storage: 4 °C,-20 °C

Storage Comment: Store as concentrated solution. Centrifuge briefly prior to opening vial. For short-term storage (1-2 weeks), store at 4°C. For long-term storage, aliquot and store at -20°C or below. Avoid multiple freeze-thaw cycles.



Immunofluorescence

Image 1. ICC/IF Image Immunofluorescence analysis of paraformaldehyde-fixed A431, using Tubulin alpha-1B, antibody at 1:200 dilution.



Western Blotting

Image 2. WB Image Sample (30 ug of whole cell lysate) A: NIH-3T3 10% SDS PAGE antibody diluted at 1:1000

Western Blotting

Image 3. WB Image alpha Tubulin antibody detects alpha Tubulin protein by western blot analysis. Various whole cell extracts (30 µg) were separated by 10% SDS-PAGE, and the membrane was blotted with alpha Tubulin antibody , diluted by 1:1000.

Please check the [product details page](#) for more images. Overall 4 images are available for ABIN2856635.