



[Go to Product page](#)

Datasheet for ABIN2856638

## anti-CBFA2T2 antibody (C-Term)

### 2 Images

#### Overview

Quantity:	100 µL
Target:	CBFA2T2
Binding Specificity:	C-Term
Reactivity:	Human
Host:	Rabbit
Clonality:	Polyclonal
Conjugate:	This CBFA2T2 antibody is un-conjugated
Application:	Western Blotting (WB), Immunofluorescence (IF), Immunocytochemistry (ICC)

#### Product Details

Immunogen:	Recombinant protein encompassing a sequence within the C-terminus region of human MTGR1. The exact sequence is proprietary.
Isotype:	IgG
Cross-Reactivity:	Mouse (Murine), Chicken, Rat (Rattus)
Cross-Reactivity (Details):	Mouse (95 %), Chicken (80 %), Rat (95 %)
Characteristics:	Rabbit polyclonal antibody to CBFA2T2 (core-binding factor, runt domain, alpha subunit 2, translocated to, 2) MTGR1 antibody [C1C3]
Purification:	Purified by antigen-affinity chromatography.

## Target Details

---

Target:	CBFA2T2
Alternative Name:	CBFA2T2 ( <a href="#">CBFA2T2 Products</a> )
Background:	<p>In acute myeloid leukemia, especially in the M2 subtype, the t(8,21)(q22,q22) translocation is one of the most frequent karyotypic abnormalities. The translocation produces a chimeric gene made up of the 5'-region of the RUNX1 (AML1) gene fused to the 3'-region of the CBFA2T1 (MTG8) gene. The chimeric protein is thought to associate with the nuclear corepressor/histone deacetylase complex to block hematopoietic differentiation. The protein encoded by this gene binds to the AML1-MTG8 complex and may be important in promoting leukemogenesis. Several transcript variants are thought to exist for this gene, but the full-length natures of only three have been described.</p> <p>Cellular Localization: Nucleus</p>
Molecular Weight:	67 kDa
Gene ID:	9139

## Application Details

---

Application Notes:	Suggested dilution Reference ICC/IF 1:100-1:1000* Western blot 1:500-1:3000* Not tested in other applications. *Optimal dilutions/concentrations should be determined by the researcher.Suggested dilutionReferenceICC/IF1:100-1:1000* Western blot1:500-1:3000*
Comment:	Positive Control: 293T , A431 , H1299 , HeLa , HepG2 , Molt-4 , Raji
Restrictions:	For Research Use only

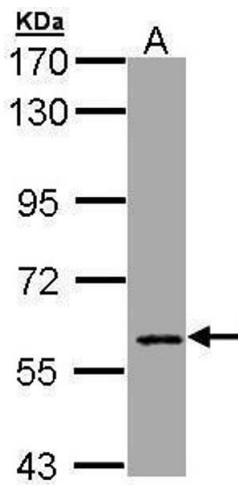
## Handling

---

Format:	Liquid
Concentration:	1 mg/mL
Buffer:	0.1M Tris, 0.1M Glycine, 10 % Glycerol ( pH 7). 0.01 % Thimerosal was added as a preservative.
Preservative:	Thimerosal (Merthiolate)
Precaution of Use:	This product contains Thimerosal (Merthiolate): a POISONOUS AND HAZARDOUS SUBSTANCE which should be handled by trained staff only.
Storage:	-20 °C
Storage Comment:	Keep as concentrated solution. Aliquot and store at -20°C or below. Avoid multiple freeze-thaw

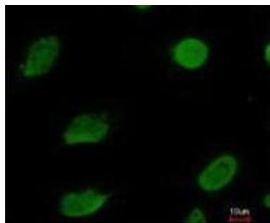
cycles.

Images

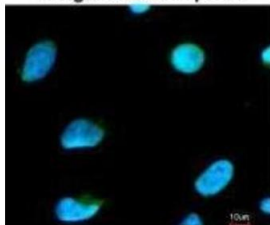


Western Blotting

**Image 1.** WB Image Sample (30 ug of whole cell lysate) A: Hep G2 , 7.5% SDS PAGE antibody diluted at 1:1000



Merged with DNA probe



Immunofluorescence

**Image 2.** ICC/IF Image Immunofluorescence analysis of paraformaldehyde-fixed HeLa, using CBFA2T2, antibody at 1:200 dilution.