



[Go to Product page](#)

Datasheet for ABIN2856646

## anti-SNTB2 antibody

### 3 Images

#### Overview

Quantity:	100 µL
Target:	SNTB2
Reactivity:	Human
Host:	Rabbit
Clonality:	Polyclonal
Conjugate:	This SNTB2 antibody is un-conjugated
Application:	Western Blotting (WB), Immunohistochemistry (Paraffin-embedded Sections) (IHC (p)), Immunocytochemistry (ICC), Immunofluorescence (IF)

#### Product Details

Immunogen:	Recombinant protein encompassing a sequence within the center region of human SNTB2. The exact sequence is proprietary.
Isotype:	IgG
Cross-Reactivity:	Human
Characteristics:	Rabbit Polyclonal antibody to SNTB2 (syntrophin, beta 2 (dystrophin-associated protein A1, 59 kDa, basic component 2)) SNTB2 antibody [N2C3-2]
Purification:	Purified by antigen-affinity chromatography.

#### Target Details

Target:	SNTB2
---------	-------

## Target Details

---

Alternative Name: [syntrophin beta 2 \(SNTB2 Products\)](#)

Background: Dystrophin is a large, rod-like cytoskeletal protein found at the inner surface of muscle fibers. Dystrophin is missing in Duchenne Muscular Dystrophy patients and is present in reduced amounts in Becker Muscular Dystrophy patients. The protein encoded by this gene is a peripheral membrane protein found associated with dystrophin and dystrophin-related proteins. This gene is a member of the syntrophin gene family, which contains at least two other structurally-related genes.

Cellular Localization: Membrane , Cytoplasmic vesicle , secretory vesicle membrane, Peripheral membrane protein , Cell junction (By similarity) , Cytoplasm , cytoskeleton

Molecular Weight: 58 kDa

Gene ID: 6645

UniProt: [Q13425](#)

## Application Details

---

Application Notes: WB: 1:500-1:3000. ICC/IF: 1:100-1:1000. IHC-P: 1:100-1:1000. Optimal dilutions/concentrations should be determined by the researcher. Not tested in other applications.

Comment: Positive Control: HepG2

Restrictions: For Research Use only

## Handling

---

Format: Liquid

Concentration: 0.84 mg/mL

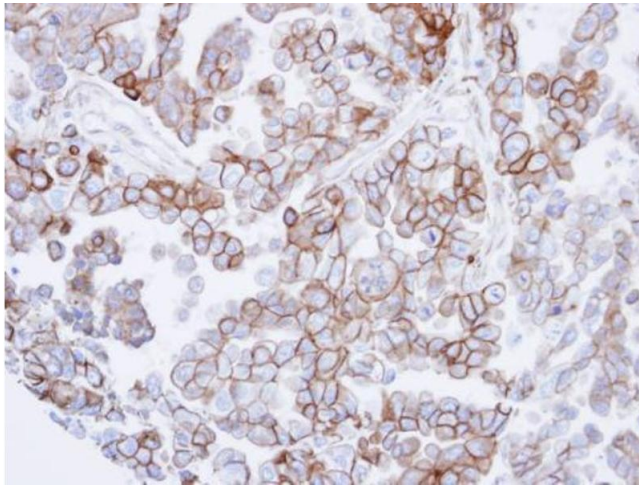
Buffer: 0.1M Tris-Glycine ( pH 7), 10 % Glycerol, 0.01 % Thimerosal

Preservative: Thimerosal (Merthiolate)

Precaution of Use: This product contains Thimerosal (Merthiolate): a POISONOUS AND HAZARDOUS SUBSTANCE which should be handled by trained staff only.

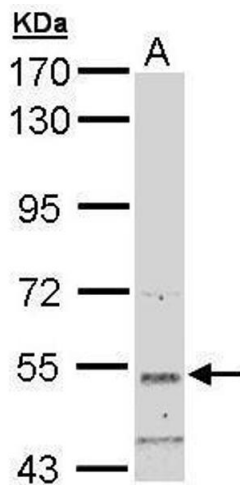
Storage: 4 °C, -20 °C

Storage Comment: Store as concentrated solution. Centrifuge briefly prior to opening vial. For short-term storage (1-2 weeks), store at 4°C. For long-term storage, aliquot and store at -20°C or below. Avoid multiple freeze-thaw cycles.



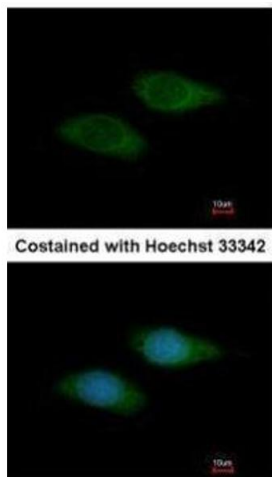
### Immunohistochemistry

**Image 1.** IHC-P Image Immunohistochemical analysis of paraffin-embedded OVCAR3 xenograft , using SNTB2, antibody at 1:500 dilution.



### Western Blotting

**Image 2.** WB Image Sample (30 ug of whole cell lysate) A: Hep G2 , 7.5% SDS PAGE antibody diluted at 1:3000



### Immunofluorescence

**Image 3.** ICC/IF Image Immunofluorescence analysis of methanol-fixed HeLa, using SNTB2, antibody at 1:200 dilution.