

Datasheet for ABIN2856647

anti-slc25a13 antibody**3** Images[Go to Product page](#)

Overview

Quantity:	100 µL
Target:	slc25a13
Reactivity:	Human
Host:	Rabbit
Clonality:	Polyclonal
Conjugate:	This slc25a13 antibody is un-conjugated
Application:	Western Blotting (WB), Immunofluorescence (IF), Immunohistochemistry (Paraffin-embedded Sections) (IHC (p)), Immunocytochemistry (ICC)

Product Details

Immunogen:	Recombinant protein encompassing a sequence within the center region of human SLC25A13. The exact sequence is proprietary.
Isotype:	IgG
Cross-Reactivity:	Human, Mouse, Rat
Characteristics:	Rabbit Polyclonal antibody to SLC25A13 (solute carrier family 25, member 13 (citrin)) SLC25A13 antibody [N3C2], Internal
Purification:	Purified by antigen-affinity chromatography.
Grade:	KO Validated

Target Details

Target:	slc25a13
---------	----------

Target Details

Alternative Name:	solute carrier family 25 member 13 (slc25a13 Products)
Background:	<p>This gene is a member of the mitochondrial carrier family. The encoded protein contains four EF-hand Ca(2+) binding motifs in the N-terminal domain, and localizes to mitochondria. The protein catalyzes the exchange of aspartate for glutamate and a proton across the inner mitochondrial membrane, and is stimulated by calcium on the external side of the inner mitochondrial membrane. Mutations in this gene result in citrullinemia, type II. Multiple transcript variants encoding different isoforms have been found for this gene.</p> <p>Cellular Localization: Mitochondrion inner membrane</p>
Molecular Weight:	74 kDa
Gene ID:	10165
UniProt:	Q9UJS0
Pathways:	Ribonucleoside Biosynthetic Process , Dicarboxylic Acid Transport

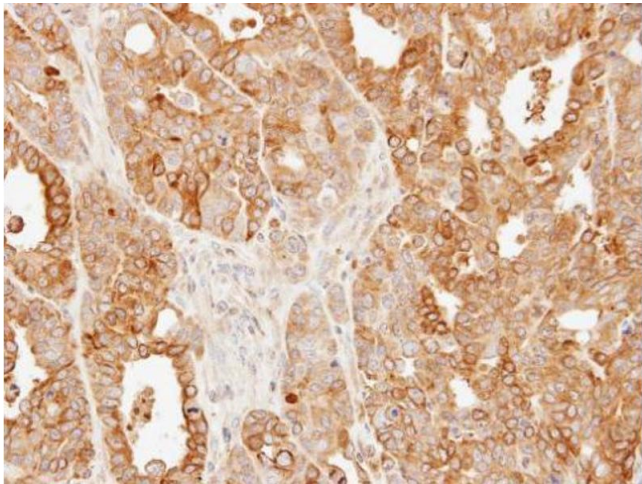
Application Details

Application Notes:	WB: 1:500-1:3000. ICC/IF: 1:100-1:1000. IHC-P: 1:100-1:1000. Optimal dilutions/concentrations should be determined by the researcher. Not tested in other applications.
Comment:	<p>Positive Control: Mouse liver , rat liver , 293T , A431 , HeLa , HepG2</p> <p>Validation: Comparison, KO/KD</p>
Restrictions:	For Research Use only

Handling

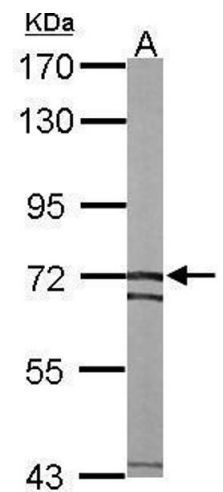
Format:	Liquid
Concentration:	0.61 mg/mL
Buffer:	1XPBS (pH 7), 20 % Glycerol, 0.025 % ProClin 300
Preservative:	ProClin
Precaution of Use:	This product contains ProClin: a POISONOUS AND HAZARDOUS SUBSTANCE which should be handled by trained staff only.
Storage:	4 °C,-20 °C
Storage Comment:	Store as concentrated solution. Centrifuge briefly prior to opening vial. For short-term storage

(1-2 weeks), store at 4°C. For long-term storage, aliquot and store at -20°C or below. Avoid multiple freeze-thaw cycles.



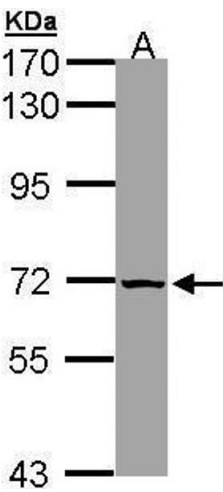
Immunohistochemistry

Image 1. IHC-P Image Immunohistochemical analysis of paraffin-embedded N87 xenograft, using SLC25A13, antibody at 1:500 dilution.



Western Blotting

Image 2. WB Image Sample (50 ug of whole cell lysate) A: mouse liver 7.5% SDS PAGE antibody diluted at 1:1000



Western Blotting

Image 3. WB Image Sample (30 ug of whole cell lysate) A: 293T 7.5% SDS PAGE antibody diluted at 1:1000