

Datasheet for ABIN2856651 anti-RALB antibody (full length)



[Go to Product page](#)

1 Image

Overview

Quantity:	100 µL
Target:	RALB (Ralb)
Binding Specificity:	full length
Reactivity:	Human
Host:	Rabbit
Clonality:	Polyclonal
Conjugate:	This RALB antibody is un-conjugated
Application:	Western Blotting (WB)

Product Details

Immunogen:	Full length human RALB Recombinant protein.
Isotype:	IgG
Cross-Reactivity:	Rhesus Monkey
Cross-Reactivity (Details):	Rhesus Monkey (100 %)
Characteristics:	Rabbit polyclonal antibody to RALB (v-ral simian leukemia viral oncogene homolog B (ras related, GTP binding protein)) RALB antibody [N1C3]
Purification:	Purified by antigen-affinity chromatography.

Target Details

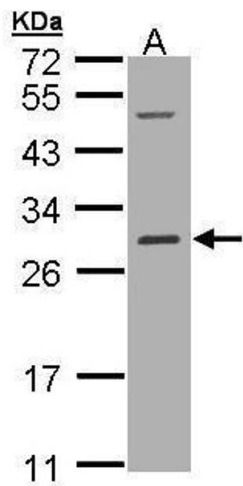
Target:	RALB (Ralb)
Alternative Name:	RALB (Ralb Products)
Background:	<p>This gene encodes a GTP-binding protein that belongs to the small GTPase superfamily and Ras family of proteins. GTP-binding proteins mediate the transmembrane signaling initiated by the occupancy of certain cell surface receptors.</p> <p>Cellular Localization: Cell membrane, Lipid-anchor, Cytoplasmic side</p>
Molecular Weight:	23 kDa
Gene ID:	5899
Pathways:	Neurotrophin Signaling Pathway , CXCR4-mediated Signaling Events

Application Details

Application Notes:	<p>Suggested dilution Reference Western blot 1:500-1:3000* Not tested in other applications.</p> <p>*Optimal dilutions/concentrations should be determined by the researcher.Suggested dilutionReferenceWestern blot1:500-1:3000*</p>
Comment:	Positive Control: 293T , A431 , H1299 , HeLaS3 , HepG2 , Molt-4 , Raji
Restrictions:	For Research Use only

Handling

Format:	Liquid
Concentration:	0.71 mg/mL
Buffer:	0.1M Tris, 0.1M Glycine, 10 % Glycerol (pH 7). 0.01 % Thimerosal was added as a preservative.
Preservative:	Thimerosal (Merthiolate)
Precaution of Use:	This product contains Thimerosal (Merthiolate): a POISONOUS AND HAZARDOUS SUBSTANCE which should be handled by trained staff only.
Storage:	-20 °C
Storage Comment:	Keep as concentrated solution. Aliquot and store at -20°C or below. Avoid multiple freeze-thaw cycles.



Western Blotting

Image 1. WB Image Sample (30 ug of whole cell lysate) A:
Hep G2 , 12% SDS PAGE antibody diluted at 1:1000