

Datasheet for ABIN2856653

anti-MTAP antibody

5 Images

[Go to Product page](#)

Overview

Quantity:	100 µL
Target:	MTAP
Reactivity:	Human
Host:	Rabbit
Clonality:	Polyclonal
Conjugate:	This MTAP antibody is un-conjugated
Application:	Western Blotting (WB), Immunofluorescence (IF), Immunoprecipitation (IP), Immunohistochemistry (Paraffin-embedded Sections) (IHC (p)), Immunocytochemistry (ICC)

Product Details

Immunogen:	Full length human MTAP Recombinant protein.
Isotype:	IgG
Cross-Reactivity:	Human, Mouse
Characteristics:	Rabbit Polyclonal antibody to MTAP (methylthioadenosine phosphorylase) MTAP antibody [N1C3]
Purification:	Purified by antigen-affinity chromatography.

Target Details

Target:	MTAP
Alternative Name:	methylthioadenosine phosphorylase (MTAP Products)

Target Details

Background: This gene encodes an enzyme that plays a major role in polyamine metabolism and is important for the salvage of both adenine and methionine. The encoded enzyme is deficient in many cancers because this gene and the tumor suppressor p16 gene are co-deleted. Multiple alternatively spliced transcript variants have been described for this gene, but their full-length natures remain unknown.

Cellular Localization: Cytoplasm

Molecular Weight: 31 kDa

Gene ID: 4507

UniProt: [Q13126](#)

Pathways: [Ribonucleoside Biosynthetic Process](#), [Methionine Biosynthetic Process](#)

Application Details

Application Notes: WB: 1:500-1:3000. ICC/IF: 1:100-1:1000. IHC-P: 1:100-1:1000. IP: 1:100-1:500. Optimal dilutions/concentrations should be determined by the researcher. Not tested in other applications.

Comment: Positive Control: Mouse liver

Restrictions: For Research Use only

Handling

Format: Liquid

Concentration: 0.18 mg/mL

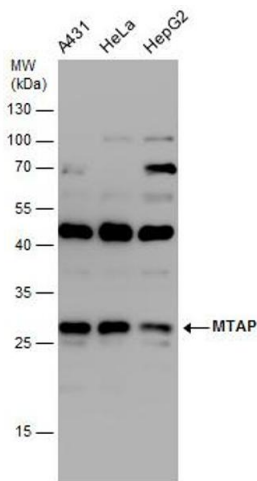
Buffer: 1XPBS pH 7, 1 % BSA, 20 % Glycerol, 0.025 % ProClin 300

Preservative: ProClin

Precaution of Use: This product contains ProClin: a POISONOUS AND HAZARDOUS SUBSTANCE which should be handled by trained staff only.

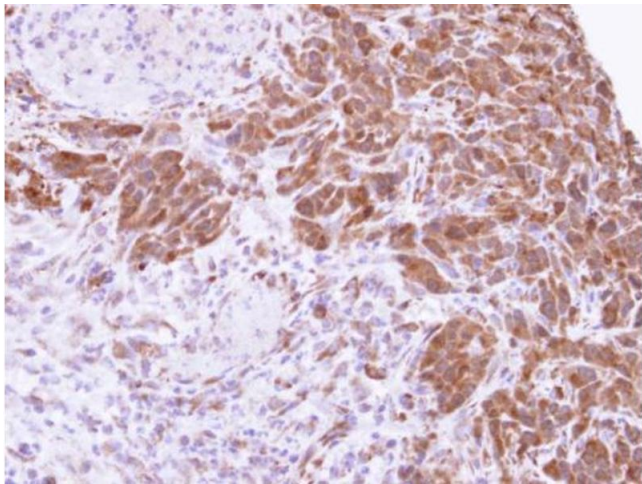
Storage: 4 °C, -20 °C

Storage Comment: Store as concentrated solution. Centrifuge briefly prior to opening vial. For short-term storage (1-2 weeks), store at 4°C. For long-term storage, aliquot and store at -20°C or below. Avoid multiple freeze-thaw cycles.



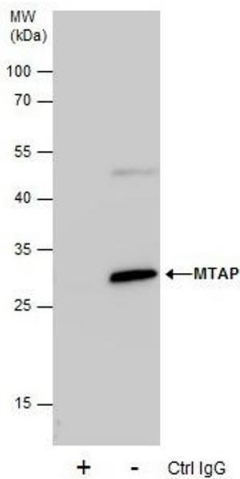
Western Blotting

Image 1. WB Image MTAP antibody detects MTAP protein by western blot analysis. Various whole cell extracts (30 µg) were separated by 12% SDS-PAGE, and the membrane was blotted with MTAP antibody , diluted at a dilution of 1:2000.



Immunohistochemistry

Image 2. IHC-P Image Immunohistochemical analysis of paraffin-embedded SAS xenograft , using MTAP, antibody at 1:500 dilution.



Immunoprecipitation

Image 3. IP Image Immunoprecipitation of MTAP protein from HeLa whole cell extracts using 5 µg of MTAP antibody [N1C3], Western blot analysis was performed using MTAP antibody [N1C3], EasyBlot anti-Rabbit IgG was used as a secondary reagent.

Please check the [product details page](#) for more images. Overall 5 images are available for ABIN2856653.