

Datasheet for ABIN2856654

anti-Dual Specificity Phosphatase 3 (DUSP3) antibody[Go to Product page](#)**3** Images

Overview

Quantity:	100 µL
Target:	Dual Specificity Phosphatase 3 (DUSP3)
Reactivity:	Human
Host:	Rabbit
Clonality:	Polyclonal
Conjugate:	Un-conjugated
Application:	Western Blotting (WB), Immunohistochemistry (Paraffin-embedded Sections) (IHC (p))

Product Details

Immunogen:	Full length human DUSP3 Recombinant protein.
Isotype:	IgG
Cross-Reactivity:	Human, Mouse
Characteristics:	Rabbit Polyclonal antibody to DUSP3 (dual specificity phosphatase 3) DUSP3 antibody [N1C3]
Purification:	Purified by antigen-affinity chromatography.

Target Details

Target:	Dual Specificity Phosphatase 3 (DUSP3)
Alternative Name:	dual specificity phosphatase 3 (DUSP3 Products)
Target Type:	Viral Protein

Target Details

Background: The protein encoded by this gene is a member of the dual specificity protein phosphatase subfamily. These phosphatases inactivate their target kinases by dephosphorylating both the phosphoserine/threonine and phosphotyrosine residues. They negatively regulate members of the mitogen-activated protein (MAP) kinase superfamily (MAPK/ERK, SAPK/JNK, p38), which are associated with cellular proliferation and differentiation. Different members of the family of dual specificity phosphatases show distinct substrate specificities for various MAP kinases, different tissue distribution and subcellular localization, and different modes of inducibility of their expression by extracellular stimuli. This gene maps in a region that contains the BRCA1 locus which confers susceptibility to breast and ovarian cancer. Although DUSP3 is expressed in both breast and ovarian tissues, mutation screening in breast cancer pedigrees and in sporadic tumors was negative, leading to the conclusion that this gene is not BRCA1.

Molecular Weight: 20 kDa

Gene ID: 1845

UniProt: [P51452](#)

Pathways: [Neurotrophin Signaling Pathway](#), [Activation of Innate immune Response](#), [Toll-Like Receptors Cascades](#)

Application Details

Application Notes: WB: 1:500-1:3000. IHC-P: 1:100-1:1000. Optimal dilutions/concentrations should be determined by the researcher. Not tested in other applications.

Comment: Positive Control: Mouse stomach , 293T , A431 , HeLa , HepG2

Restrictions: For Research Use only

Handling

Format: Liquid

Concentration: 0.58 mg/mL

Buffer: 0.1M Tris-Glycine (pH 7), 10 % Glycerol, 0.01 % Thimerosal

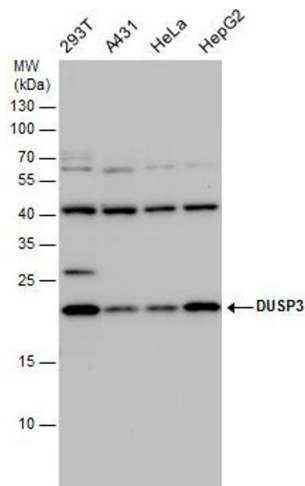
Preservative: Thimerosal (Merthiolate)

Precaution of Use: This product contains Thimerosal (Merthiolate): a POISONOUS AND HAZARDOUS SUBSTANCE which should be handled by trained staff only.

Handling

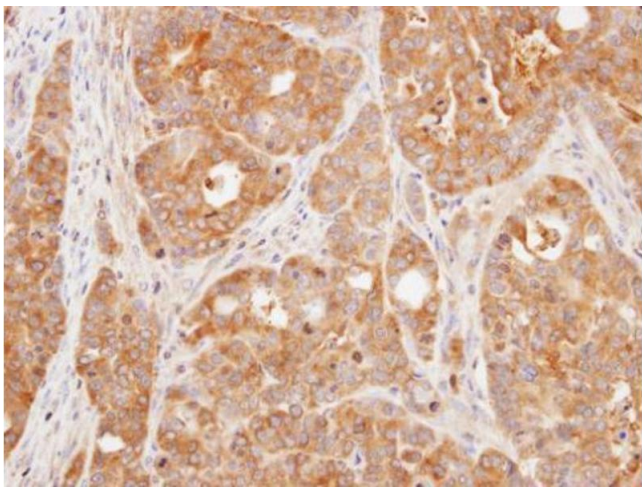
Storage:	4 °C,-20 °C
Storage Comment:	Store as concentrated solution. Centrifuge briefly prior to opening vial. For short-term storage (1-2 weeks), store at 4°C. For long-term storage, aliquot and store at -20°C or below. Avoid multiple freeze-thaw cycles.

Images



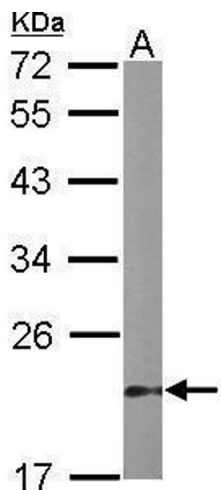
Western Blotting

Image 1. WB Image DUSP3 antibody detects DUSP3 protein by western blot analysis. Various whole cell extracts (30 µg) were separated by 15 % SDS-PAGE, and blotted with DUSP3 antibody , diluted by 1:1000



Immunohistochemistry

Image 2. IHC-P Image Immunohistochemical analysis of paraffin-embedded N87 xenograft, using DUSP3, antibody at 1:500 dilution.



Western Blotting

Image 3. WB Image Sample (50 ug of whole cell lysate) A: mouse stomach 12% SDS PAGE antibody diluted at 1:1000