



[Go to Product page](#)

Datasheet for ABIN2856655  
**anti-NDUFAF4 antibody (full length)**

1 Image

Overview

Quantity:	100 µL
Target:	NDUFAF4
Binding Specificity:	full length
Reactivity:	Human
Host:	Rabbit
Clonality:	Polyclonal
Conjugate:	This NDUFAF4 antibody is un-conjugated
Application:	Western Blotting (WB)

Product Details

Immunogen:	Full length human HRPAP20 Recombinant protein.
Isotype:	IgG
Characteristics:	Rabbit polyclonal antibody to HRPAP20 (chromosome 6 open reading frame 66) HRPAP20 antibody [N1C3]
Purification:	Purified by antigen-affinity chromatography.

Target Details

Target:	NDUFAF4
Alternative Name:	HRPAP20 ( <a href="#">NDUFAF4 Products</a> )
Background:	NADH:ubiquinone oxidoreductase (complex I) catalyzes the transfer of electrons from NADH to

## Target Details

---

ubiquinone (coenzyme Q) in the first step of the mitochondrial respiratory chain, resulting in the translocation of protons across the inner mitochondrial membrane. This gene encodes a complex I assembly factor. Mutations in this gene are a cause of mitochondrial complex I deficiency.

Cellular Localization: Mitochondrion

---

Molecular Weight: 20 kDa

---

Gene ID: 29078

---

## Application Details

---

Application Notes: Suggested dilution Reference Western blot 1:500-1:3000\* Not tested in other applications.  
\*Optimal dilutions/concentrations should be determined by the researcher.Suggested dilutionReferenceWestern blot1:500-1:3000\*

---

Comment: Positive Control: 293T , Raji

---

Restrictions: For Research Use only

---

## Handling

---

Format: Liquid

---

Concentration: 1 mg/mL

---

Buffer: 0.1M Tris, 0.1M Glycine, 10 % Glycerol ( pH 7). 0.01 % Thimerosal was added as a preservative.

---

Preservative: Thimerosal (Merthiolate)

---

Precaution of Use: This product contains Thimerosal (Merthiolate): a POISONOUS AND HAZARDOUS SUBSTANCE which should be handled by trained staff only.

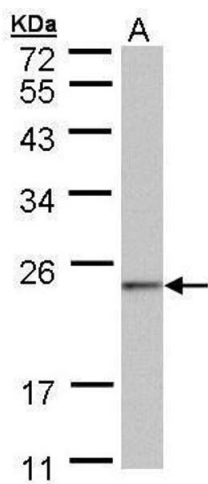
---

Storage: -20 °C

---

Storage Comment: Keep as concentrated solution. Aliquot and store at -20°C or below. Avoid multiple freeze-thaw cycles.

---



### Western Blotting

**Image 1.** WB Image Sample (30 ug of whole cell lysate) A:  
293T 12% SDS PAGE antibody diluted at 1:1000