

Datasheet for ABIN2856658

anti-SUCLG1 antibody

6 Images

[Go to Product page](#)

Overview

Quantity:	100 µL
Target:	SUCLG1
Reactivity:	Human
Host:	Rabbit
Clonality:	Polyclonal
Conjugate:	This SUCLG1 antibody is un-conjugated
Application:	Western Blotting (WB), Immunofluorescence (IF), Immunoprecipitation (IP), Immunocytochemistry (ICC), Immunohistochemistry (Paraffin-embedded Sections) (IHC (p))

Product Details

Immunogen:	Full length human SUCLG1 Recombinant protein.
Isotype:	IgG
Specificity:	Knockdown/Knockout validation was supported by references (PMID:26990993)
Cross-Reactivity:	Human, Mouse, Rat
Characteristics:	Rabbit Polyclonal antibody to SUCLG1 (succinate-CoA ligase, alpha subunit) SUCLG1 antibody
Purification:	Purified by antigen-affinity chromatography.
Grade:	KO Validated

Target Details

Target:	SUCLG1
Alternative Name:	succinate-CoA ligase alpha subunit (SUCLG1 Products)
Background:	<p>This gene encodes the alpha subunit of the heterodimeric enzyme succinate coenzyme A ligase. This enzyme is targeted to the mitochondria and catalyzes the conversion of succinyl CoA and ADP or GDP to succinate and ATP or GTP. Mutations in this gene are the cause of the metabolic disorder fatal infantile lactic acidosis and mitochondrial DNA depletion.</p> <p>Cellular Localization: Mitochondrion</p>
Molecular Weight:	36 kDa
Gene ID:	8802
UniProt:	P53597

Application Details

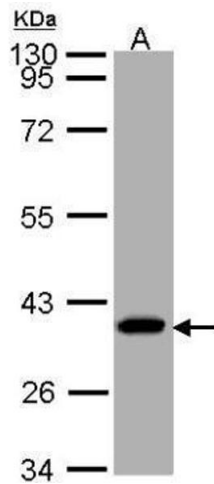
Application Notes:	WB: 1:1000-1:10000. ICC/IF: 1:100-1:1000. IHC-P: 1:100-1:1000. Optimal dilutions/concentrations should be determined by the researcher. Not tested in other applications.
Comment:	Positive Control: Rat brain , Mouse brain Validation: KO/KD
Restrictions:	For Research Use only

Handling

Format:	Liquid
Concentration:	1.48 mg/mL
Buffer:	1XPBS pH 7, 20 % Glycerol, 0.025 % ProClin 300
Preservative:	ProClin
Precaution of Use:	This product contains ProClin: a POISONOUS AND HAZARDOUS SUBSTANCE which should be handled by trained staff only.
Storage:	4 °C,-20 °C
Storage Comment:	Store as concentrated solution. Centrifuge briefly prior to opening vial. For short-term storage (1-2 weeks), store at 4°C. For long-term storage, aliquot and store at -20°C or below. Avoid

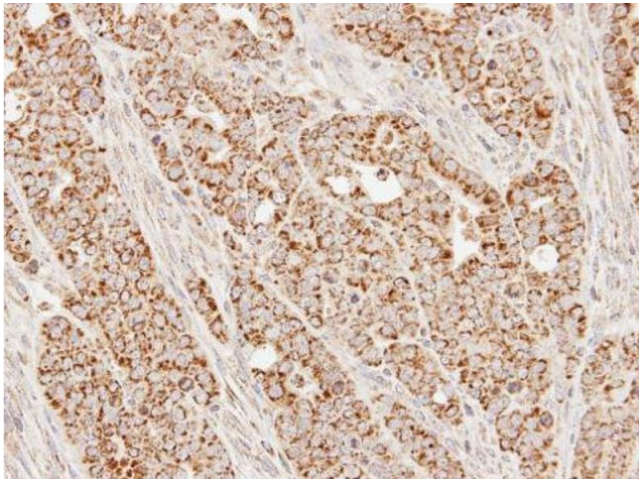
multiple freeze-thaw cycles.

Validation report #100014 for Immunofluorescence (IF)



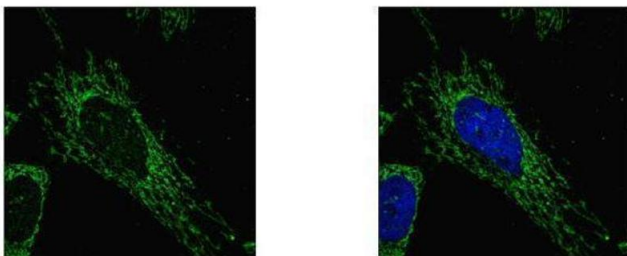
Western Blotting

Image 1. WB Image Sample (30 ug of whole cell lysate) A: A431 10% SDS PAGE antibody diluted at 1:1000



Immunohistochemistry

Image 2. IHC-P Image Immunohistochemical analysis of paraffin-embedded N87 xenograft, using SUCLG1, antibody at 1:100 dilution.



Immunofluorescence

Image 3. ICC/IF Image SUCLG1 antibody detects SUCLG1 protein at mitochondria by confocal immunofluorescent analysis. Sample: HeLa cells were fixed in 2% paraformaldehyde/culture medium at 37°C for 30 min. Green: SUCLG1 protein stained by SUCLG1 antibody, diluted at 1:500. Blue: Hoechst 33342 staining. [Images captured by Olympus FV10i Confocal Laser Scanning Microscope]

Please check the [product details page](#) for more images. Overall 6 images are available for ABIN2856658.