

Datasheet for ABIN2856660  
**anti-PDE6D antibody (full length)**



[Go to Product page](#)

3 Images

## Overview

Quantity:	100 µL
Target:	PDE6D
Binding Specificity:	full length
Reactivity:	Human
Host:	Rabbit
Clonality:	Polyclonal
Conjugate:	This PDE6D antibody is un-conjugated
Application:	Western Blotting (WB), Immunofluorescence (IF), Immunocytochemistry (ICC), Immunohistochemistry (Paraffin-embedded Sections) (IHC (p))

## Product Details

Immunogen:	Full length human PDE6D Recombinant protein.
Isotype:	IgG
Cross-Reactivity:	Mouse (Murine), Dog (Canine), Monkey, Zebrafish (Danio rerio), Cow (Bovine)
Cross-Reactivity (Details):	Mouse (98 %), Dog (98 %), Monkey (99 %), Zebrafish (90 %), Bovine (99 %)
Characteristics:	Rabbit Polyclonal antibody to PDE6D (phosphodiesterase 6D, cGMP-specific, rod, delta) PDE6D antibody [N1C3]
Purification:	Purified by antigen-affinity chromatography.

## Target Details

---

Target: PDE6D

Alternative Name: PDE6D ([PDE6D Products](#))

Molecular Weight: 17 kDa

Gene ID: 5147

## Application Details

---

Application Notes: Suggested dilution Reference ICC/IF 1:100-1:1000\* IHC (Formalin-fixed paraffin-embedded sections) 1:100-1:1000\* Western blot 1:500-1:3000\* Not tested in other applications. \*Optimal dilutions/concentrations should be determined by the researcher.Suggested dilutionReferenceICC/IF1:100-1:1000\* IHC (Formalin-fixed paraffin-embedded sections)1:100-1:1000\* Western blot1:500-1:3000\*

Comment: Positive Control: Molt-4

Restrictions: For Research Use only

## Handling

---

Format: Liquid

Concentration: 1 mg/mL

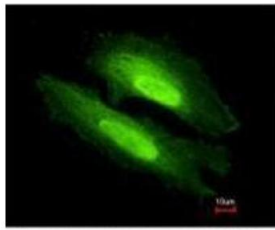
Buffer: 0.1M Tris, 0.1M Glycine, 10 % Glycerol ( pH 7). 0.01 % Thimerosal was added as a preservative.

Preservative: Thimerosal (Merthiolate)

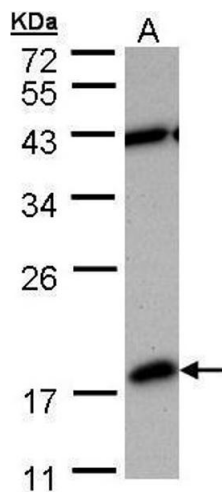
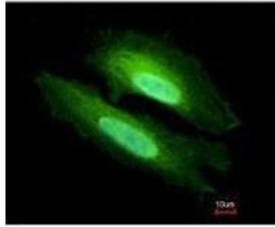
Precaution of Use: This product contains Thimerosal (Merthiolate); a POISONOUS AND HAZARDOUS SUBSTANCE which should be handled by trained staff only.

Storage: -20 °C

Storage Comment: Keep as concentrated solution. Aliquot and store at -20°C or below. Avoid multiple freeze-thaw cycles.



Costained with Hoechst 33342

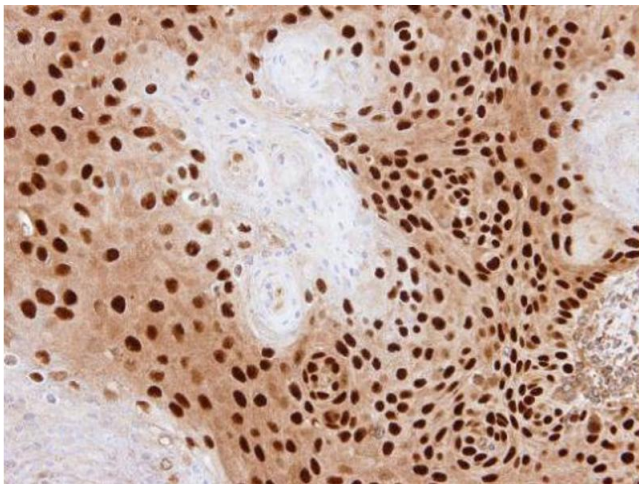


### Immunofluorescence

**Image 1.** ICC/IF Image Immunofluorescence analysis of methanol-fixed HeLa, using PDE6D, antibody at 1:500 dilution.

### Western Blotting

**Image 2.** WB Image Sample (30 ug of whole cell lysate) A: MOLT4, 12% SDS PAGE antibody diluted at 1:1000



### Immunohistochemistry

**Image 3.** IHC-P Image Immunohistochemical analysis of paraffin-embedded SAS xenograft, using PDE6D, antibody at 1:500 dilution.