

Datasheet for ABIN2856662
anti-NHP2L1 antibody (full length)

5 Images

[Go to Product page](#)

Overview

Quantity:	100 µL
Target:	NHP2L1
Binding Specificity:	full length
Reactivity:	Human
Host:	Rabbit
Clonality:	Polyclonal
Conjugate:	This NHP2L1 antibody is un-conjugated
Application:	Western Blotting (WB), Immunofluorescence (IF), Immunocytochemistry (ICC), Immunohistochemistry (Paraffin-embedded Sections) (IHC (p))

Product Details

Immunogen:	Full length human NHP2-like protein 1 Recombinant protein.
Isotype:	IgG
Cross-Reactivity:	Pig (Porcine), Cow (Bovine)
Cross-Reactivity (Details):	Pig (100 %), Bovine (100 %)
Characteristics:	Rabbit polyclonal antibody to NHP2-like protein 1 (NHP2 non-histone chromosome protein 2-like 1 (S. cerevisiae)) NHP2-like protein 1 antibody [N1C3]
Purification:	Purified by antigen-affinity chromatography.

Target Details

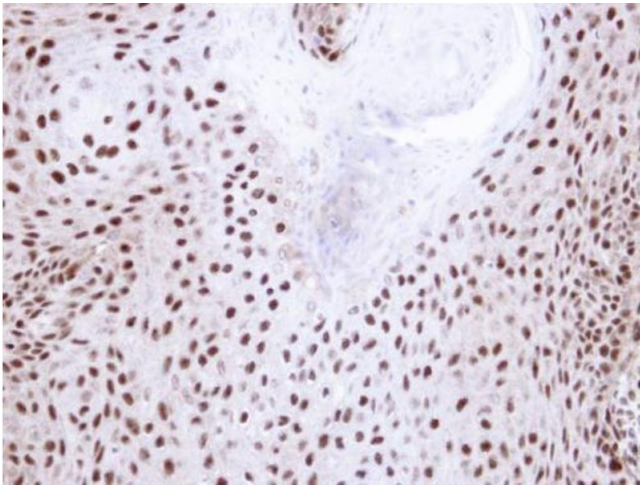
Target:	NHP2L1
Alternative Name:	NHP2-Like Protein 1 (NHP2L1 Products)
Background:	<p>Originally named because of its sequence similarity to the <i>Saccharomyces cerevisiae</i> NHP2 (non-histone protein 2), this protein appears to be a highly conserved nuclear protein that is a component of the [U4/U6.U5] tri-snRNP. It binds to the 5' stem-loop of U4 snRNA. Two transcript variants encoding the same protein have been found for this gene.</p> <p>Cellular Localization: Nucleus , nucleolus</p>
Molecular Weight:	14 kDa
Gene ID:	4809

Application Details

Application Notes:	<p>Suggested dilution Reference ICC/IF 1:100-1:1000* IHC (Formalin-fixed paraffin-embedded sections) 1:100-1:1000* Western blot 1:500-1:3000* Not tested in other applications. *Optimal dilutions/concentrations should be determined by the researcher.Suggested dilutionReferenceICC/IF1:100-1:1000* IHC (Formalin-fixed paraffin-embedded sections)1:100-1:1000* Western blot1:500-1:3000*</p>
Comment:	Positive Control: 293T , H1299 , HeLa , HepG2 , Molt-4 , Raji
Restrictions:	For Research Use only

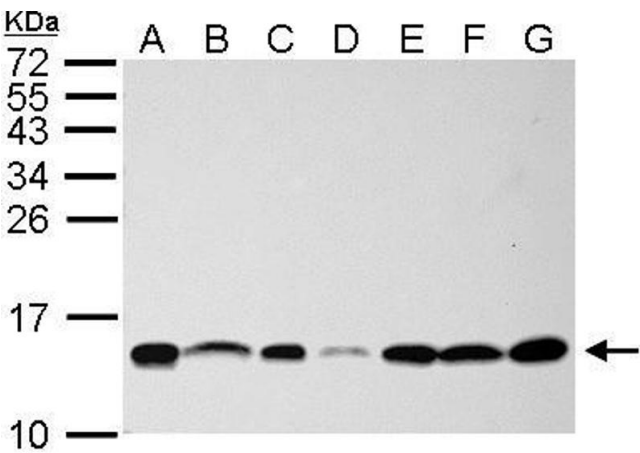
Handling

Format:	Liquid
Concentration:	1 mg/mL
Buffer:	0.1M Tris, 0.1M Glycine, 10 % Glycerol (pH 7). 0.01 % Thimerosal was added as a preservative.
Preservative:	Thimerosal (Merthiolate)
Precaution of Use:	This product contains Thimerosal (Merthiolate): a POISONOUS AND HAZARDOUS SUBSTANCE which should be handled by trained staff only.
Storage:	-20 °C
Storage Comment:	Keep as concentrated solution. Aliquot and store at -20°C or below. Avoid multiple freeze-thaw cycles.



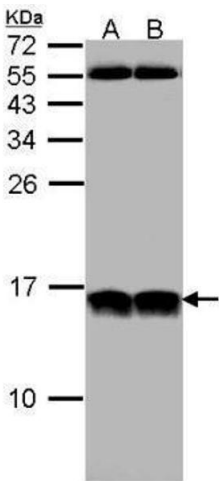
Immunohistochemistry

Image 1. IHC-P Image Immunohistochemical analysis of paraffin-embedded Cal27 xenograft, using NHP2-like protein 1, antibody at 1:100 dilution.



Western Blotting

Image 2. WB Image NHP2L1 antibody detects NHP2L1 protein by Western blot analysis. A. 30 µg Neuro2A whole cell lysate/extract B. 30 µg GL261 whole cell lysate/extract C. 30 µg C8D30 whole cell lysate/extract D. 30 µg NIH-3T3 whole cell lysate/extract E. 30 µg BCL-1 whole cell lysate/extract F. 30 µg Raw264.7 whole cell lysate/extract G. 30 µg C2C12 whole cell lysate/extract 15 % SDS-PAGE NHP2L1 antibody , dilution: 1:1000



Western Blotting

Image 3. WB Image Sample (30 ug of whole cell lysate) A: HeLa B: Hep G2 , 12% SDS PAGE antibody diluted at 1:1000

Please check the [product details page](#) for more images. Overall 5 images are available for ABIN2856662.