



[Go to Product page](#)

Datasheet for ABIN2856665
anti-DUSP26 antibody (Center)

3 Images

Overview

Quantity:	100 µL
Target:	DUSP26
Binding Specificity:	Center
Reactivity:	Human, Mouse
Host:	Rabbit
Clonality:	Polyclonal
Conjugate:	This DUSP26 antibody is un-conjugated
Application:	Western Blotting (WB), Immunofluorescence (IF), Immunocytochemistry (ICC)

Product Details

Immunogen:	Carrier-protein conjugated synthetic peptide encompassing a sequence within the center region of human DUSP26. The exact sequence is proprietary.
Isotype:	IgG
Cross-Reactivity:	Rat (Rattus), Rhesus Monkey, Cow (Bovine)
Cross-Reactivity (Details):	Rat (100 %), Rhesus Monkey (94 %), Bovine (81 %)
Characteristics:	Rabbit Polyclonal antibody to DUSP26 (dual specificity phosphatase 26 (putative)) DUSP26 antibody [N1C1]
Purification:	Purified by antigen-affinity chromatography.

Target Details

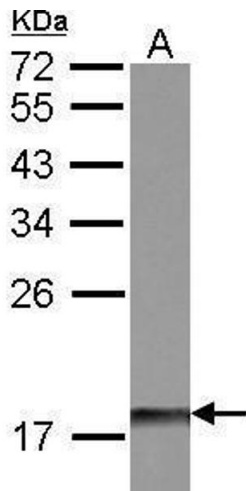
Target:	DUSP26
Alternative Name:	DUSP26 (DUSP26 Products)
Background:	Inactivates MAPK1 and MAPK3 which leads to dephosphorylation of heat shock factor protein 4 and a reduction in its DNA-binding activity. Inhibits MAP kinase p38 by dephosphorylating it and inhibits p38-mediated apoptosis in anaplastic thyroid cancer cells. Can also induce activation of MAP kinase p38 and c-Jun N-terminal kinase (JNK). Cellular Localization: Cytoplasm , Nucleus , Golgi apparatus
Molecular Weight:	24 kDa
Gene ID:	78986

Application Details

Application Notes:	Suggested dilution Reference ICC/IF 1:100-1:1000* Western blot 1:500-1:3000* Not tested in other applications. *Optimal dilutions/concentrations should be determined by the researcher.Suggested dilutionReferenceICC/IF1:100-1:1000* Western blot1:500-1:3000*
Comment:	Positive Control: NT2D1 , IMR32 , U87-MG , MCF-7 , mouse brain
Restrictions:	For Research Use only

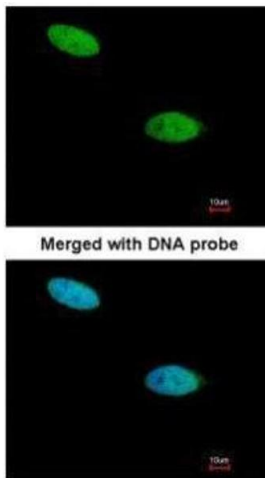
Handling

Format:	Liquid
Concentration:	1.01 mg/mL
Buffer:	0.1M Tris, 0.1M Glycine, 10 % Glycerol (pH 7). 0.01 % Thimerosal was added as a preservative.
Preservative:	Thimerosal (Merthiolate)
Precaution of Use:	This product contains Thimerosal (Merthiolate): a POISONOUS AND HAZARDOUS SUBSTANCE which should be handled by trained staff only.
Storage:	-20 °C
Storage Comment:	Keep as concentrated solution. Aliquot and store at -20°C or below. Avoid multiple freeze-thaw cycles.



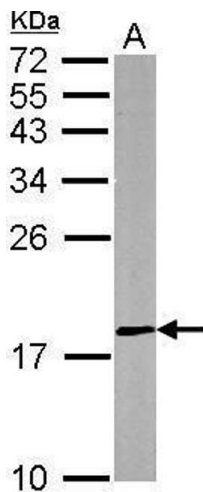
Western Blotting

Image 1. WB Image Sample (30 ug of whole cell lysate) A:
IMR32 12% SDS PAGE antibody diluted at 1:500



Immunofluorescence

Image 2. ICC/IF Image Immunofluorescence analysis of paraformaldehyde-fixed HeLa, using DUSP26, antibody at 1:200 dilution.



Western Blotting

Image 3. WB Image Sample (50 ug of whole cell lysate) A:
mouse brain 12% SDS PAGE antibody diluted at 1:500