



[Go to Product page](#)

Datasheet for ABIN2856669
anti-DNASE1 antibody

4 Images

Overview

Quantity:	100 µL
Target:	DNASE1
Reactivity:	Human
Host:	Rabbit
Clonality:	Polyclonal
Conjugate:	This DNASE1 antibody is un-conjugated
Application:	Western Blotting (WB), Immunofluorescence (IF), Immunocytochemistry (ICC), Immunohistochemistry (Paraffin-embedded Sections) (IHC (p))

Product Details

Immunogen:	Recombinant protein corresponding to human DNase I.
Isotype:	IgG
Cross-Reactivity:	Human, Monkey
Characteristics:	Rabbit Polyclonal antibody to DNase I (deoxyribonuclease I) DNase I antibody [N1C3]
Purification:	Purified by antigen-affinity chromatography.

Target Details

Target:	DNASE1
Alternative Name:	deoxyribonuclease 1 (DNASE1 Products)

Target Details

Background: This gene encodes a member of the DNase family. This protein is stored in the zymogen granules of the nuclear envelope and functions by cleaving DNA in an endonucleolytic manner. At least six autosomal codominant alleles have been characterized, DNASE1*1 through DNASE1*6, and the sequence of DNASE1*2 represented in this record. Mutations in this gene have been associated with systemic lupus erythematosus (SLE), an autoimmune disease. A recombinant form of this protein is used to treat the one of the symptoms of cystic fibrosis by hydrolyzing the extracellular DNA in sputum and reducing its viscosity. Alternate transcriptional splice variants of this gene have been observed but have not been thoroughly characterized.

Cellular Localization: Secreted , Nucleus envelope

Molecular Weight: 31 kDa

Gene ID: 1773

UniProt: [P24855](#)

Application Details

Application Notes: WB: 1:500-1:3000. ICC/IF: 1:100-1:1000. IHC-P: 1:100-1:1000. Optimal dilutions/concentrations should be determined by the researcher. Not tested in other applications.

Restrictions: For Research Use only

Handling

Format: Liquid

Concentration: 1.19 mg/mL

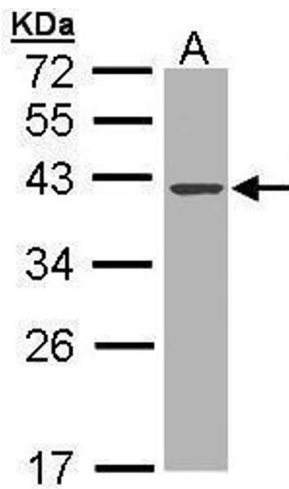
Buffer: 1XPBS pH 7, 20 % Glycerol, 0.025 % ProClin 300

Preservative: ProClin

Precaution of Use: This product contains ProClin: a POISONOUS AND HAZARDOUS SUBSTANCE which should be handled by trained staff only.

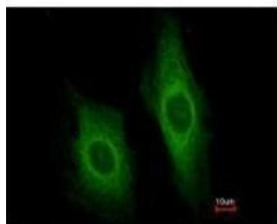
Storage: 4 °C,-20 °C

Storage Comment: Store as concentrated solution. Centrifuge briefly prior to opening vial. For short-term storage (1-2 weeks), store at 4°C. For long-term storage, aliquot and store at -20°C or below. Avoid multiple freeze-thaw cycles.

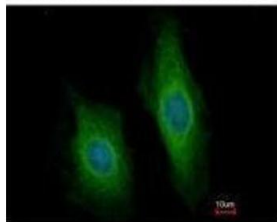


Western Blotting

Image 1. WB Image Sample (30 µg of whole cell lysate) A: MOLT4, 10% SDS PAGE antibody diluted at 1:1000

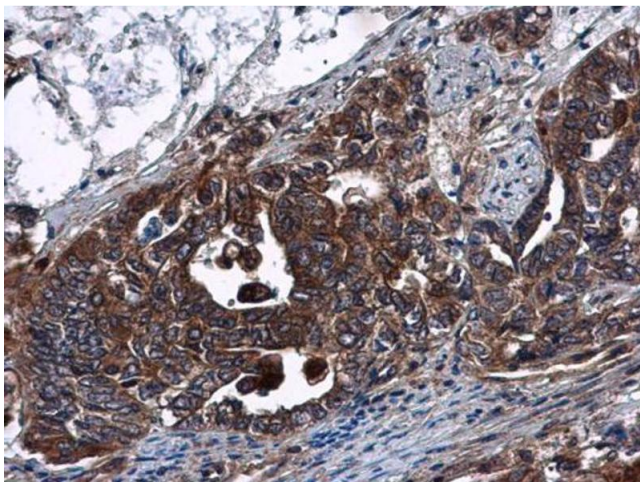


Costained with Hoechst 33342



Immunofluorescence

Image 2. ICC/IF Image Immunofluorescence analysis of methanol-fixed HeLa, using DNase I, antibody at 1:200 dilution.



Immunohistochemistry

Image 3. IHC-P Image DNase I antibody [N1C3] detects DNase I protein at cytoplasm in human cervical carcinoma by immunohistochemical analysis. Sample: Paraffin-embedded human cervical carcinoma. DNase I antibody [N1C3], diluted at 1:500.

Please check the [product details page](#) for more images. Overall 4 images are available for ABIN2856669.