



[Go to Product page](#)

Datasheet for ABIN2856670
anti-AP1S2 antibody (full length)

2 Images

Overview

Quantity:	100 µL
Target:	AP1S2
Binding Specificity:	full length
Reactivity:	Human
Host:	Rabbit
Clonality:	Polyclonal
Conjugate:	This AP1S2 antibody is un-conjugated
Application:	Western Blotting (WB), Immunofluorescence (IF), Immunocytochemistry (ICC)

Product Details

Immunogen:	Full length human AP1S2 Recombinant protein.
Isotype:	IgG
Cross-Reactivity:	Rat (Rattus), Chimpanzee
Cross-Reactivity (Details):	Rat (100 %), Chimpanzee (100 %)
Characteristics:	Rabbit Polyclonal antibody to AP1S2 (adaptor-related protein complex 1, sigma 2 subunit) AP1S2 antibody
Purification:	Purified by antigen-affinity chromatography.

Target Details

Target:	AP1S2
---------	-------

Target Details

Alternative Name: AP1S2 ([AP1S2 Products](#))

Background: Adaptor protein complex 1 is found at the cytoplasmic face of coated vesicles located at the Golgi complex, where it mediates both the recruitment of clathrin to the membrane and the recognition of sorting signals within the cytosolic tails of transmembrane receptors. This complex is a heterotetramer composed of two large, one medium, and one small adaptin subunit. The protein encoded by this gene serves as the small subunit of this complex and is a member of the adaptin protein family. Transcript variants utilizing alternative polyadenylation signals exist for this gene.

Cellular Localization: Golgi apparatus , Cytoplasmic vesicle membrane , Membrane , clathrin-coated pit

Molecular Weight: 19 kDa

Gene ID: 8905

Application Details

Application Notes: Suggested dilution Reference ICC/IF 1:100-1:1000* Western blot 1:500-1:3000* Not tested in other applications. *Optimal dilutions/concentrations should be determined by the researcher.Suggested dilutionReferenceICC/IF1:100-1:1000* Western blot1:500-1:3000*

Comment: Positive Control: A431 , Raji

Restrictions: For Research Use only

Handling

Format: Liquid

Concentration: 0.53 mg/mL

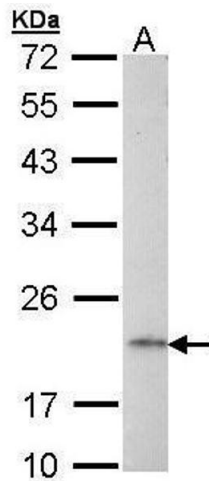
Buffer: 0.1M Tris, 0.1M Glycine, 10 % Glycerol (pH 7). 0.01 % Thimerosal was added as a preservative.

Preservative: Thimerosal (Merthiolate)

Precaution of Use: This product contains Thimerosal (Merthiolate): a POISONOUS AND HAZARDOUS SUBSTANCE which should be handled by trained staff only.

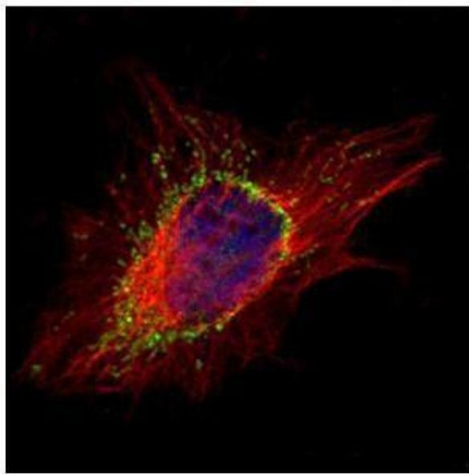
Storage: -20 °C

Storage Comment: Keep as concentrated solution. Aliquot and store at -20°C or below. Avoid multiple freeze-thaw cycles.



Western Blotting

Image 1. WB Image Sample (30 ug of whole cell lysate) A:
Raji 12% SDS PAGE antibody diluted at 1:1000



Immunofluorescence

Image 2. ICC/IF Image Confocal immunofluorescence analysis (Olympus FV10i) of methanol-fixed HeLa, using AP1S2, antibody (Green) at 1:500 dilution. Alpha-tubulin filaments were labeled with (Red) at 1:2000.