



[Go to Product page](#)

Datasheet for ABIN2856675
anti-PHKA1 antibody (C-Term)

4 Images

Overview

Quantity:	100 µL
Target:	PHKA1
Binding Specificity:	C-Term
Reactivity:	Human
Host:	Rabbit
Clonality:	Polyclonal
Conjugate:	This PHKA1 antibody is un-conjugated
Application:	Western Blotting (WB), Immunofluorescence (IF), Immunohistochemistry (Paraffin-embedded Sections) (IHC (p)), Immunocytochemistry (ICC)

Product Details

Immunogen:	Recombinant protein encompassing a sequence within the C-terminus region of human PHKA1. The exact sequence is proprietary.
Isotype:	IgG
Cross-Reactivity:	Mouse (Murine), Rat (Rattus)
Cross-Reactivity (Details):	Mouse (96 %), Rat (95 %)
Characteristics:	Rabbit Polyclonal antibody to PHKA1 (phosphorylase kinase, alpha 1 (muscle)) PHKA1 antibody [C2C3], C-term
Purification:	Purified by antigen-affinity chromatography.

Target Details

Target:	PHKA1
Alternative Name:	PHKA1 (PHKA1 Products)
Background:	<p>The PHKA1 gene encodes the alpha subunit of muscle phosphorylase kinase (EC 2.7.1.38), a key regulatory enzyme of glycogen metabolism. Phosphorylase kinase consists of 4 copies of an alpha-beta-gamma-delta tetramer. The alpha, beta (PHKB, MIM 172490), and gamma (PHKG1, MIM 172470 and PHKG2, MIM 172471) subunits have several isoforms, the delta subunit is calmodulin (CALM1, MIM 114180). PHKA2 (MIM 306000) encodes the alpha subunit of liver-specific phosphorylase kinase and is also located on the X chromosome.[supplied by OMIM]</p> <p>Cellular Localization: Cell membrane, Lipid-anchor, Cytoplasmic side</p>
Molecular Weight:	137 kDa
Gene ID:	5255
Pathways:	Cellular Glucan Metabolic Process

Application Details

Application Notes:	<p>Suggested dilution Reference ICC/IF 1:100-1:1000* IHC (Formalin-fixed paraffin-embedded sections) 1:100-1:1000* Western blot 1:500-1:3000* Not tested in other applications. *Optimal dilutions/concentrations should be determined by the researcher.Suggested dilutionReferenceICC/IF1:100-1:1000* IHC (Formalin-fixed paraffin-embedded sections)1:100-1:1000* Western blot1:500-1:3000*</p>
Comment:	Positive Control: 293T , A431 , H1299 , HeLa
Restrictions:	For Research Use only

Handling

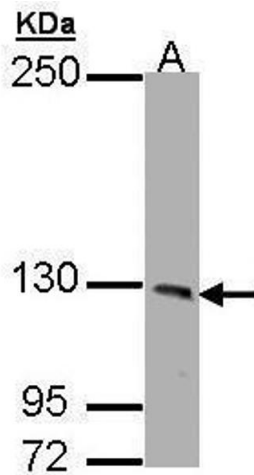
Format:	Liquid
Concentration:	1 mg/mL
Buffer:	0.1M Tris, 0.1M Glycine, 10 % Glycerol (pH 7). 0.01 % Thimerosal was added as a preservative.
Preservative:	Thimerosal (Merthiolate)
Precaution of Use:	This product contains Thimerosal (Merthiolate): a POISONOUS AND HAZARDOUS SUBSTANCE which should be handled by trained staff only.

Handling

Storage: -20 °C

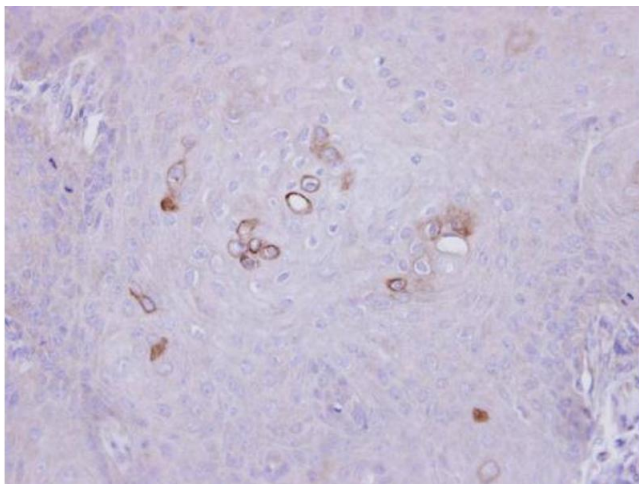
Storage Comment: Keep as concentrated solution. Aliquot and store at -20°C or below. Avoid multiple freeze-thaw cycles.

Images



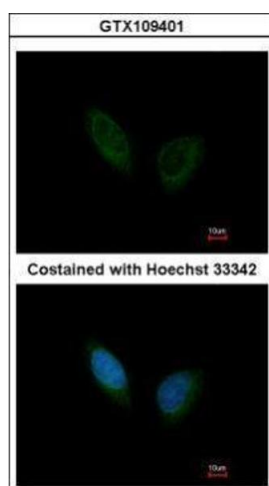
Western Blotting

Image 1. WB Image Sample (30 ug of whole cell lysate) A: HeLa 7.5% SDS PAGE antibody diluted at 1:1000



Immunohistochemistry

Image 2. IHC-P Image Immunohistochemical analysis of paraffin-embedded Cal27 xenograft, using PHKA1, antibody at 1:500 dilution.



Immunofluorescence

Image 3. ICC/IF Image Immunofluorescence analysis of methanol-fixed HeLa, using PHKA1, antibody at 1:200 dilution.

Please check the [product details page](#) for more images. Overall 4 images are available for ABIN2856675.