

Datasheet for ABIN2856676
anti-CCDC83 antibody



[Go to Product page](#)

3 Images

Overview

Quantity:	100 µL
Target:	CCDC83
Reactivity:	Human
Host:	Rabbit
Clonality:	Polyclonal
Conjugate:	This CCDC83 antibody is un-conjugated
Application:	Western Blotting (WB), Immunohistochemistry (Paraffin-embedded Sections) (IHC (p)), Immunofluorescence (IF), Immunocytochemistry (ICC)

Product Details

Immunogen:	Recombinant protein encompassing a sequence within the center region of human CCDC83. The exact sequence is proprietary.
Isotype:	IgG
Cross-Reactivity:	Human
Characteristics:	Rabbit Polyclonal antibody to CCDC83 (coiled-coil domain containing 83) CCDC83 antibody [N1C2]
Purification:	Purified by antigen-affinity chromatography.

Target Details

Target:	CCDC83
Alternative Name:	coiled-coil domain containing 83 (CCDC83 Products)

Target Details

Molecular Weight: 49 kDa

Gene ID: 220047

UniProt: [Q8IWF9](#)

Application Details

Application Notes: WB: 1:500-1:3000. ICC/IF: 1:100-1:1000. IHC-P: 1:100-1:1000. Optimal dilutions/concentrations should be determined by the researcher. Not tested in other applications.

Comment: Positive Control: HepG2

Restrictions: For Research Use only

Handling

Format: Liquid

Concentration: 1 mg/mL

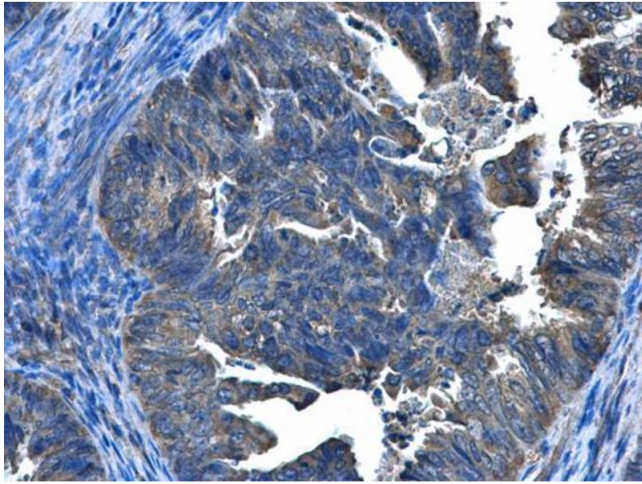
Buffer: 0.1M Tris-Glycine (pH 7), 10 % Glycerol, 0.01 % Thimerosal

Preservative: Thimerosal (Merthiolate)

Precaution of Use: This product contains Thimerosal (Merthiolate): a POISONOUS AND HAZARDOUS SUBSTANCE which should be handled by trained staff only.

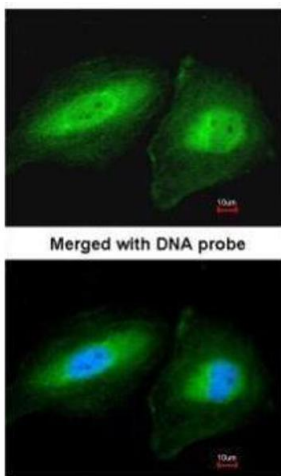
Storage: 4 °C, -20 °C

Storage Comment: Store as concentrated solution. Centrifuge briefly prior to opening vial. For short-term storage (1-2 weeks), store at 4°C. For long-term storage, aliquot and store at -20°C or below. Avoid multiple freeze-thaw cycles.



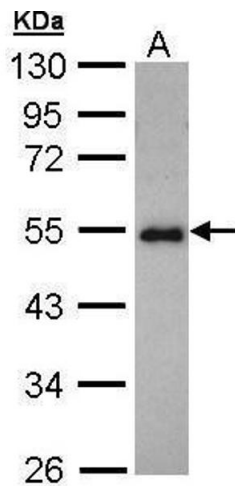
Immunohistochemistry

Image 1. IHC-P Image CCDC83 antibody [N1C2] detects CCDC83 protein at cytoplasm and nucleus in human endometrial cancer by immunohistochemical analysis. Sample: Paraffin-embedded human endometrial cancer. CCDC83 antibody [N1C2] , diluted at 1:500.



Immunofluorescence

Image 2. ICC/IF Image Immunofluorescence analysis of paraformaldehyde-fixed HeLa, using CCDC83, antibody at 1:200 dilution.



Western Blotting

Image 3. WB Image Sample (30 ug of whole cell lysate) A: Hep G2 , 10% SDS PAGE antibody diluted at 1:1000