

Datasheet for ABIN2856684

anti-PEX26 antibody**3** Images[Go to Product page](#)

Overview

Quantity:	100 µL
Target:	PEX26
Reactivity:	Human
Host:	Rabbit
Clonality:	Polyclonal
Conjugate:	This PEX26 antibody is un-conjugated
Application:	Western Blotting (WB), Immunohistochemistry (Paraffin-embedded Sections) (IHC (p)), Immunocytochemistry (ICC), Immunofluorescence (IF)

Product Details

Immunogen:	Full length human PEX26 Recombinant protein.
Isotype:	IgG
Cross-Reactivity:	Human
Characteristics:	Rabbit Polyclonal antibody to PEX26 (peroxisomal biogenesis factor 26) PEX26 antibody
Purification:	Purified by antigen-affinity chromatography.

Target Details

Target:	PEX26
Alternative Name:	peroxisomal biogenesis factor 26 (PEX26 Products)

Target Details

Background: This gene belongs to the peroxin-26 gene family. It is probably required for protein import into peroxisomes. It anchors PEX1 and PEX6 to peroxisome membranes, possibly to form heteromeric AAA ATPase complexes required for the import of proteins into peroxisomes. Defects in this gene are the cause of peroxisome biogenesis disorder complementation group 8 (PBD-CG8). PBD refers to a group of peroxisomal disorders arising from a failure of protein import into the peroxisomal membrane or matrix. The PBD group is comprised of four disorders: Zellweger syndrome (ZWS), neonatal adrenoleukodystrophy (NALD), infantile Refsum disease (IRD), and classical rhizomelic chondrodysplasia punctata (RCDP). Two transcript variants encoding the same protein have been identified for this gene.

Cellular Localization: Peroxisome membrane, Single-pass type II membrane protein

Molecular Weight: 34 kDa

Gene ID: 55670

UniProt: [Q7Z412](#)

Application Details

Application Notes: WB: 1:500-1:3000. ICC/IF: 1:100-1:1000. IHC-P: 1:100-1:1000. Optimal dilutions/concentrations should be determined by the researcher. Not tested in other applications.

Comment: Positive Control: A431

Restrictions: For Research Use only

Handling

Format: Liquid

Concentration: 1 mg/mL

Buffer: 0.1M Tris-Glycine (pH 7), 10 % Glycerol, 0.01 % Thimerosal

Preservative: Thimerosal (Merthiolate)

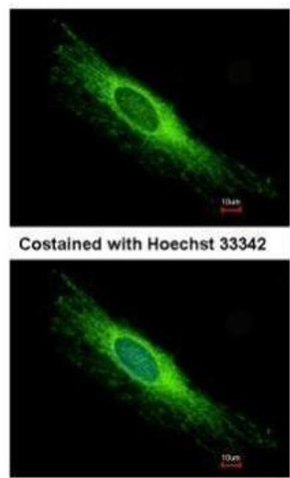
Precaution of Use: This product contains Thimerosal (Merthiolate): a POISONOUS AND HAZARDOUS SUBSTANCE which should be handled by trained staff only.

Storage: 4 °C, -20 °C

Storage Comment: Store as concentrated solution. Centrifuge briefly prior to opening vial. For short-term storage (1-2 weeks), store at 4°C. For long-term storage, aliquot and store at -20°C or below. Avoid

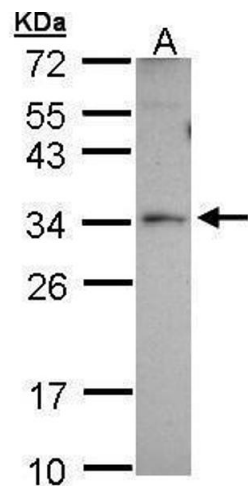
multiple freeze-thaw cycles.

Images



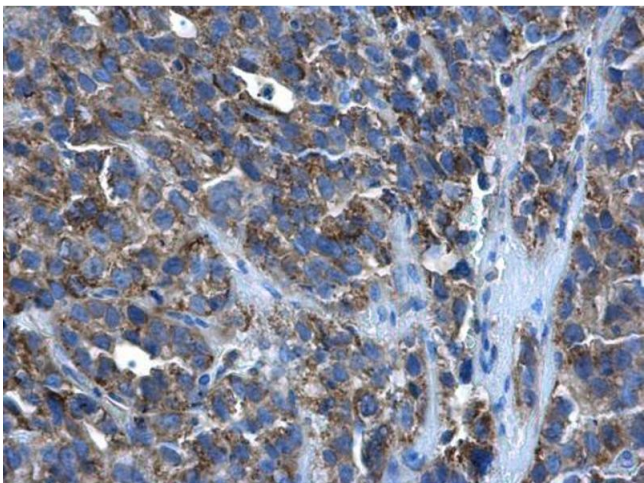
Immunofluorescence

Image 1. ICC/IF Image Immunofluorescence analysis of methanol-fixed HeLa, using PEX26, antibody at 1:500 dilution.



Western Blotting

Image 2. WB Image Sample (30 ug of whole cell lysate) A: A431 12% SDS PAGE antibody diluted at 1:1000



Immunohistochemistry

Image 3. IHC-P Image PEX26 antibody detects PEX26 protein at cytoplasm in human cervical cancer by immunohistochemical analysis. Sample: Paraffin-embedded human cervical cancer. PEX26 antibody , diluted at 1:500.