

Datasheet for ABIN2856685

anti-LRPPRC antibody

4 Images

[Go to Product page](#)

Overview

Quantity:	100 µL
Target:	LRPPRC
Reactivity:	Human
Host:	Rabbit
Clonality:	Polyclonal
Conjugate:	This LRPPRC antibody is un-conjugated
Application:	Western Blotting (WB), Immunofluorescence (IF), Immunohistochemistry (Paraffin-embedded Sections) (IHC (p)), Immunocytochemistry (ICC)

Product Details

Immunogen:	Recombinant protein encompassing a sequence within the center region of human LRP130. The exact sequence is proprietary.
Isotype:	IgG
Cross-Reactivity:	Human, Mouse, Rat
Characteristics:	Rabbit Polyclonal antibody to LRP130 (leucine-rich PPR-motif containing) LRP130 antibody [N3C2], Internal
Purification:	Purified by antigen-affinity chromatography.
Grade:	KO Validated

Target Details

Target:	LRPPRC
---------	--------

Target Details

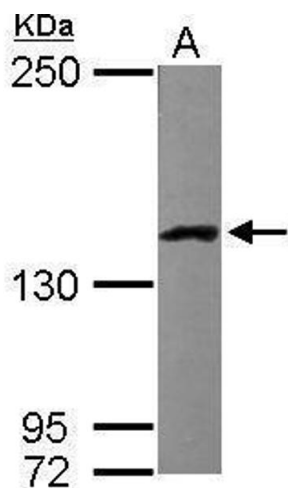
Alternative Name:	leucine rich pentatricopeptide repeat containing (LRPPRC Products)
Background:	<p>This gene encodes a protein that is leucine-rich and is thought to play a role in regulating the interaction of the cytoskeleton with a variety of cellular processes. Mutations in this gene are associated with the French-Canadian type of Leigh syndrome. Transcripts ranging in size from 4.8 to 7.0 kb which result from alternative polyadenylation have been reported for this gene.</p> <p>Cellular Localization: Mitochondrion , Nucleus , nucleoplasm , Nucleus inner membrane , Nucleus outer membrane</p>
Molecular Weight:	158 kDa
Gene ID:	10128
UniProt:	P42704

Application Details

Application Notes:	WB: 1:1000-1:10000. ICC/IF: 1:100-1:1000. IHC-P: 1:100-1:1000. Optimal dilutions/concentrations should be determined by the researcher. Not tested in other applications.
Comment:	Positive Control: H1299 , HeLa , mouse brain , 293T Validation: KO/KD
Restrictions:	For Research Use only

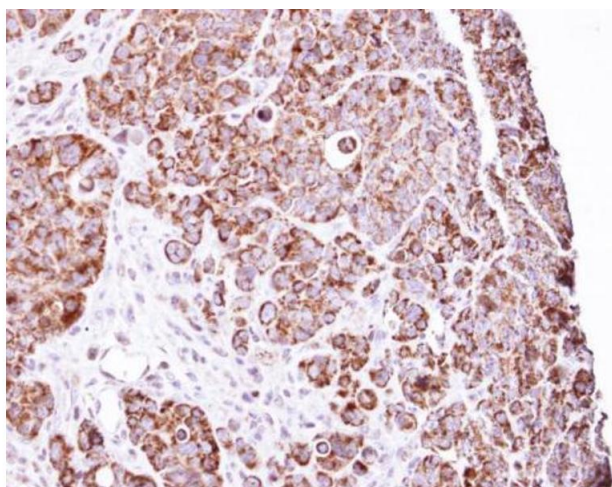
Handling

Format:	Liquid
Concentration:	0.36 mg/mL
Buffer:	1XPBS (pH 7), 1 % BSA, 20 % Glycerol, 0.025 % ProClin 300
Preservative:	ProClin
Precaution of Use:	This product contains ProClin: a POISONOUS AND HAZARDOUS SUBSTANCE which should be handled by trained staff only.
Storage:	4 °C, -20 °C
Storage Comment:	Store as concentrated solution. Centrifuge briefly prior to opening vial. For short-term storage (1-2 weeks), store at 4°C. For long-term storage, aliquot and store at -20°C or below. Avoid multiple freeze-thaw cycles.



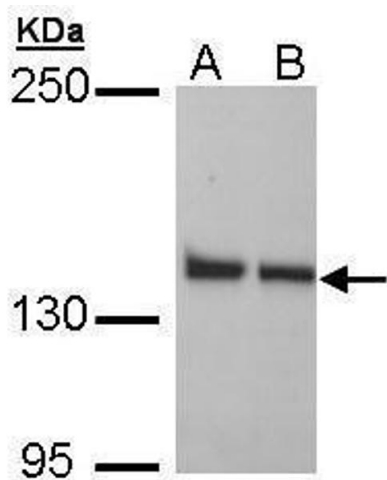
Western Blotting

Image 1. WB Image Sample (50 ug of whole cell lysate) A: Mouse brain 5% SDS PAGE antibody diluted at 1:5000



Immunohistochemistry

Image 2. IHC-P Image Immunohistochemical analysis of paraffin-embedded SW480 Xenograft, using LRP130 , antibody at 1:100 dilution.



Western Blotting

Image 3. WB Image Sample (30 ug of whole cell lysate) A: H1299 B: HeLa 5% SDS PAGE antibody diluted at 1:1000

Please check the [product details page](#) for more images. Overall 4 images are available for ABIN2856685.